



ARKANSAS DEPARTMENT OF HEALTH

Renee Mallory, RN, BSN
Secretary of Health

Jennifer Dillaha, MD
Director

Viral Respiratory Diseases Weekly Report 2024-2025

Week Ending Saturday 02/08/2025

Mike Cima, PhD
State Epidemiologist

Austin Porter III, DrPH, MPH
Deputy Chief Science Officer
Deputy State Epidemiologist

Prepared by:

Haytham Safi, MD, MPH
Epidemiology Supervisor
Influenza Surveillance Coordinator
Haytham.Safi@Arkansas.gov
501-661-2920

Reviewed by:

Lori Simmons, MS
Branch Chief, Epidemiology

February 12, 2025

The Arkansas Department of Health (ADH) produces a Weekly Viral Respiratory Diseases Report for clinicians. The report provides information on Influenza, COVID-19 and Respiratory Syncytial Virus (RSV) activity in the state. The report also compares activities in Arkansas to the U.S. ADH receives reports of only a fraction of COVID-19 cases and flu cases since it only requires reports of flu hospitalizations, deaths, and outbreaks. RSV is not a reportable disease in Arkansas. Therefore, it is important to understand that the information in the weekly update is representative of the timing and location of activity, but it does not reflect the overall disease burden. It is presumed that there are many more people actually affected than the report shows. Clinicians and policymakers may find the report helpful in terms of communicating to colleagues and patients about the current status of viral respiratory diseases in the state and nationwide.

Report Key Points for Week 6:

- Arkansas reported “Very High” or 12 out of 13 for the Influenza-Like-Illness (ILI) activity level indicator determined by data reported to ILINet.
- Hospital Emergency Department visits reported through Syndromic Surveillance were at 13.55% for Influenza-Like-Illness (ILI), 3.36% for COVID-Like-Illness (CLI), and 0.52% for Respiratory Syncytial Virus (RSV).
- Outpatient visits for ILI reported through ILINet from the Sentinel Providers were at 7.57%.
- Arkansas Children’s Hospitals and associated clinic locations in central and northwest Arkansas report Flu A, H3 test positivity at about 17%; Flu A, H1 2009 is currently at 15%; and RSV test positivity is over 12%.
- The average school absenteeism rate last week was 10.63% among public schools.
- Arkansas reported 47 influenza-related deaths this season including one pediatric death, 78.7% of them were not vaccinated.
- Nationally, CDC estimates that there have been at least 24 million illnesses, 310,000 hospitalizations, and 13,000 deaths from flu so far this season.
- Arkansas reported 13 COVID-19-related deaths this week and a total of 530 deaths in 2024, and 50 since 01/01/2025. The weekly deaths reflect week reported, not date of death.
- This flu season, 33 influenza outbreaks have been reported from nursing homes or other congregate setting institutions.
- Nationally, the proportion of deaths reported to the National Center for Health Statistics that were attributed to pneumonia, influenza and COVID-19 (PIC) was above the epidemic threshold this week.

You can report flu year-round and view the Viral Respiratory Disease Weekly Report during the influenza season at:
<http://www.healthy.arkansas.gov/programs-services/topics/influenza>. You can also access the reporting website directly at:
<https://FluReport.ADH.Arkansas.gov>.

For additional national and international influenza and other respiratory diseases surveillance information:

World Health Organization (WHO): <https://www.who.int/tools/flunet>

CDC - Seasonal influenza (Flu) - Weekly Report: <https://www.cdc.gov/fluview/index.html>

Other respiratory viruses: visit the national respiratory and enteric virus surveillance system (NREVSS):
<https://www.cdc.gov/surveillance/nrevss/index.html>

2024-2025 Viral Respiratory Diseases Weekly Report (Week 6: 02/02/2025 – 02/08/2025)

Deaths Reported for Week 6*

* Deaths reflect week reported not date of death.

- Deaths from all causes: 782
- Deaths due to Pneumonia: 64
- Deaths due to Flu: 17
- COVID-19 Related Deaths: 13

Cumulative Deaths

- Total Flu deaths since 09/29/24: 47
- Total COVID deaths in 2024: 530
- Total COVID deaths since 01/01/25: 50

New Hospital Admissions Reports

- Flu Admissions: 02/02/25 - 02/08/25: 410
- Flu Admissions Prior to 02/02/25
Reported this Week: 145
- COVID Week ending 02/08/2025: 44

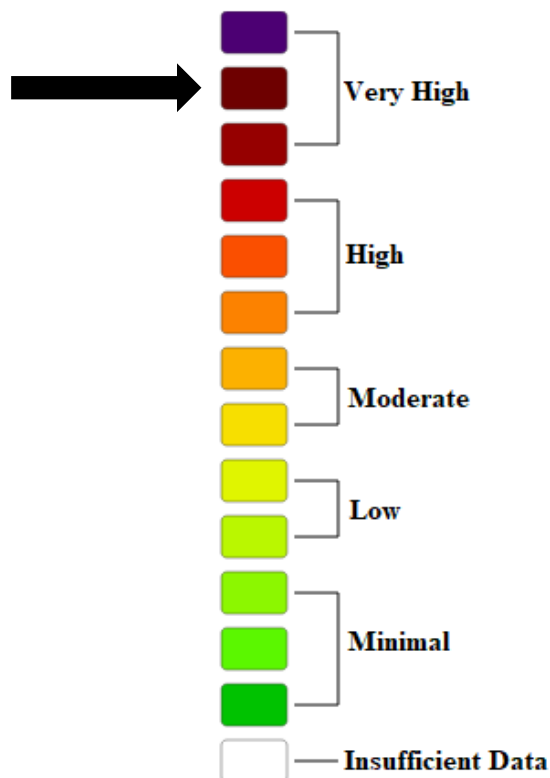
School Absenteeism*

* Average daily absenteeism for all public schools during this reporting week.

Week Ending: 02/08/2025

- Percent Absent: 10.63
- Previous Week: 11.06

Weekly Arkansas ILI Intensity Level Reported by Sentinel Providers



Lab Confirmed Influenza Cases

Reported flu cases reflect only a portion of the actual numbers of flu cases in the state.

Tests	Week 6	Cumulative Cases Since 09/29/2024
Flu A+	2,170	10,016
Flu B+	73	815
Flu A and B	14	108
Flu B/Victoria	0	0
Flu B/ Yamagata	0	0
Flu A, H1N1+	41	222
Flu A, H3+	35	174
Unsubtypeable	0	0
Total	2,333	11,335

Influenza Reported Hospitalization and Death Cumulative Cases Since 09/29/2024

Age Groups	Hospitalized	Deaths
0-4 yr.	75	0
5-17 yr.	59	1
18-24 yr.	31	0
25-44 yr.	148	1
45-64 yr.	478	11
>= 65 yr.	973	34
Unknown	0	0
Total	1,764	47

ER Visits (Syndromic Surveillance)

Week Ending: 02/08/2025:

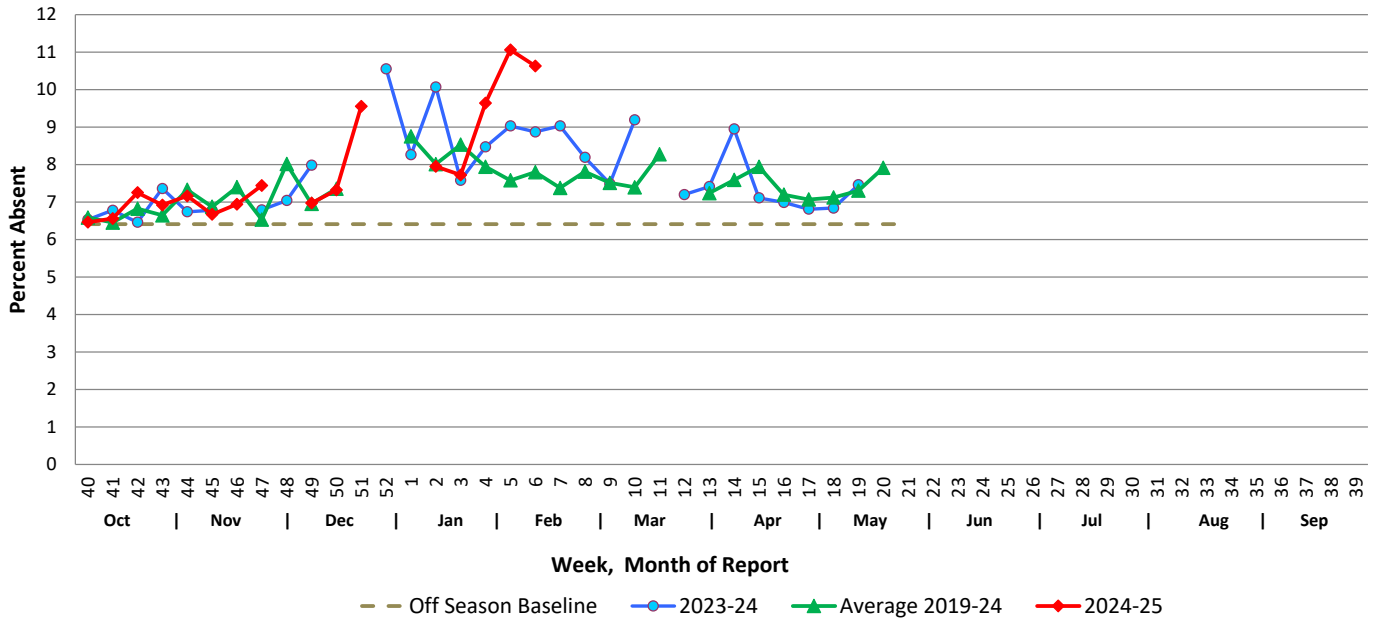
- Total (% of Visits)
- Total ER Visits: 11,261
 - Visits with ILI: 1,526 (13.55%)
 - Visits with CLI: 378 (3.36%)
 - Visits with RSV: 59 (0.52%)

Previous Week:

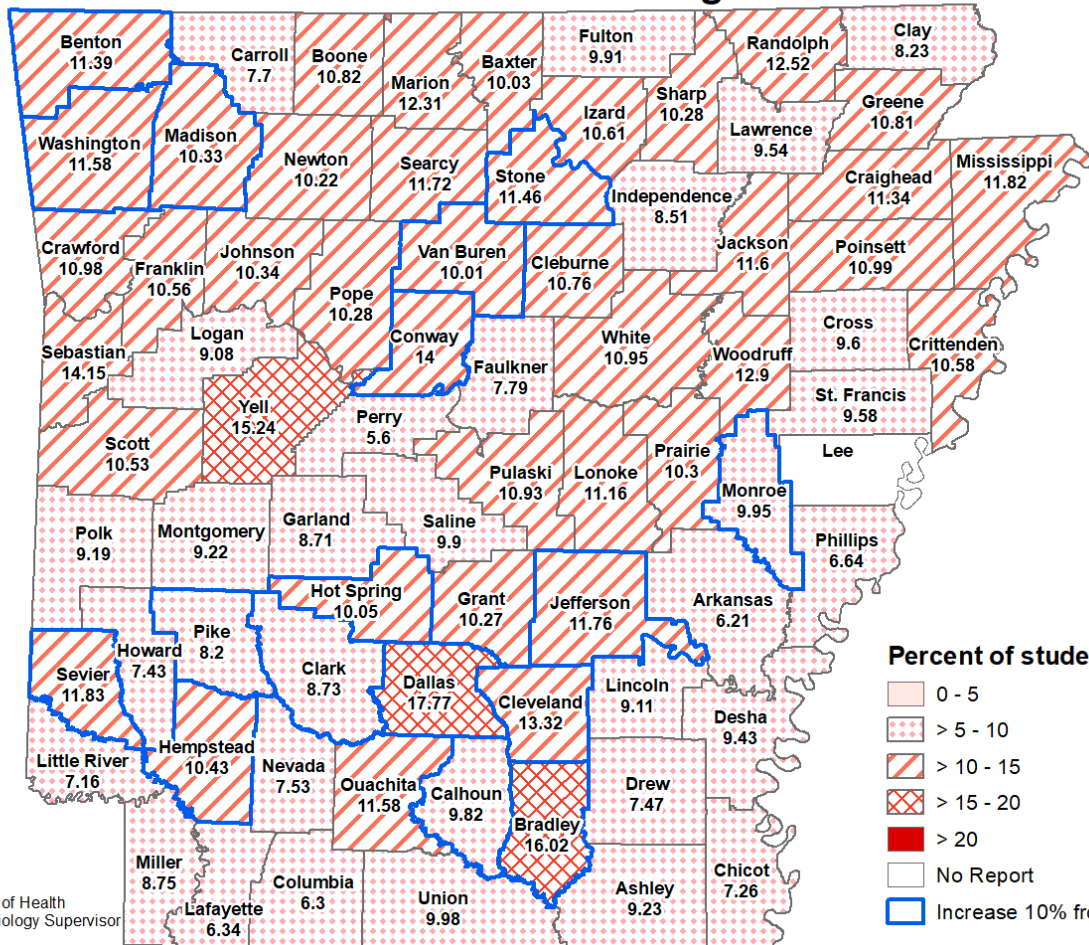
- Total (% of Visits)
- Total ER Visits: 10,437
 - Visits with ILI: 1,521 (14.57%)
 - Visits with CLI: 362 (3.47%)
 - Visits with RSV: 73 (0.70%)

School Report

Weekly School Absenteeism Rates, Arkansas Public Schools



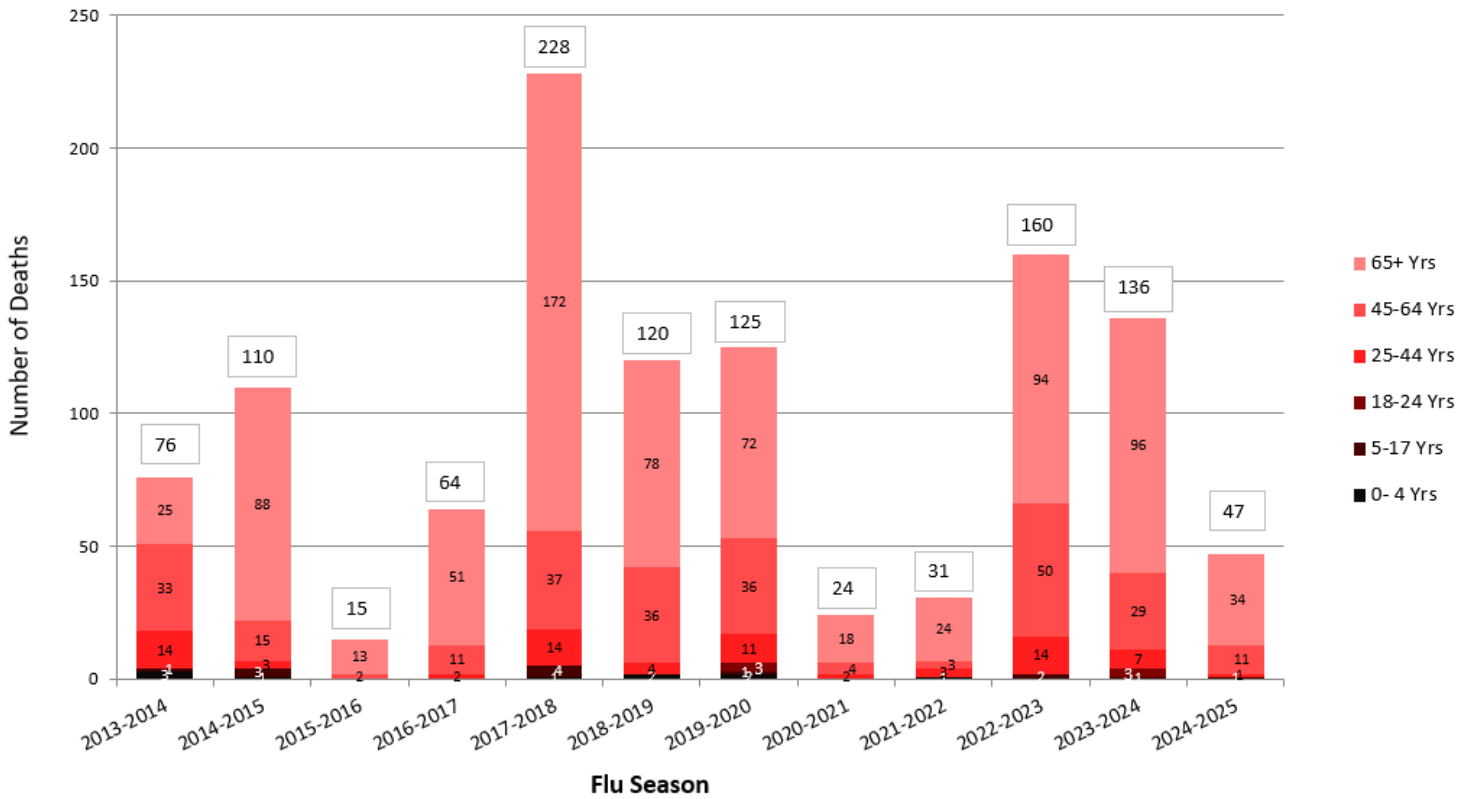
School Absenteeism Rate per County, Arkansas 2024-2025 Percent Absent for Week Ending 2/7/2025



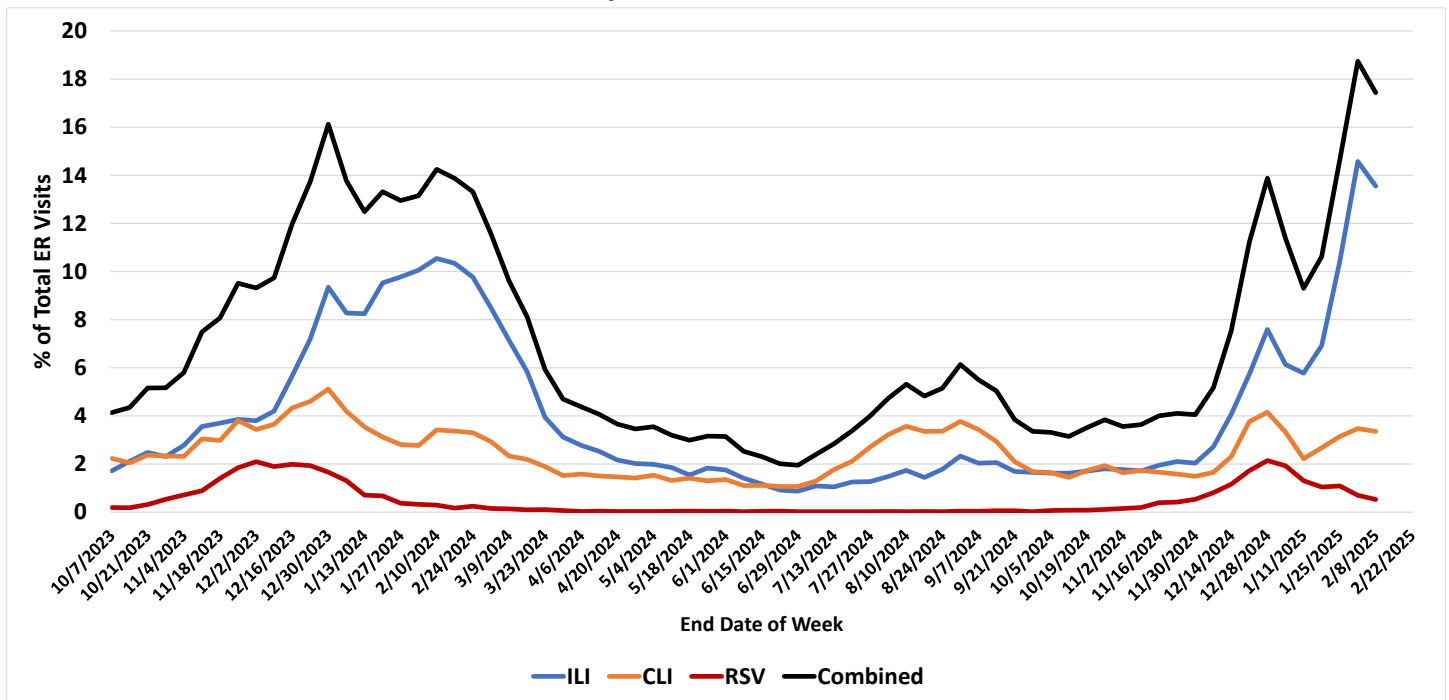
Date: February 11, 2025
 Source: Arkansas Department of Health
 Author: Haytham Safi, Epidemiology Supervisor

Influenza Mortality by Age Group, Arkansas 2013-2025 (Provisional)

Report Updated: 02/11/2025

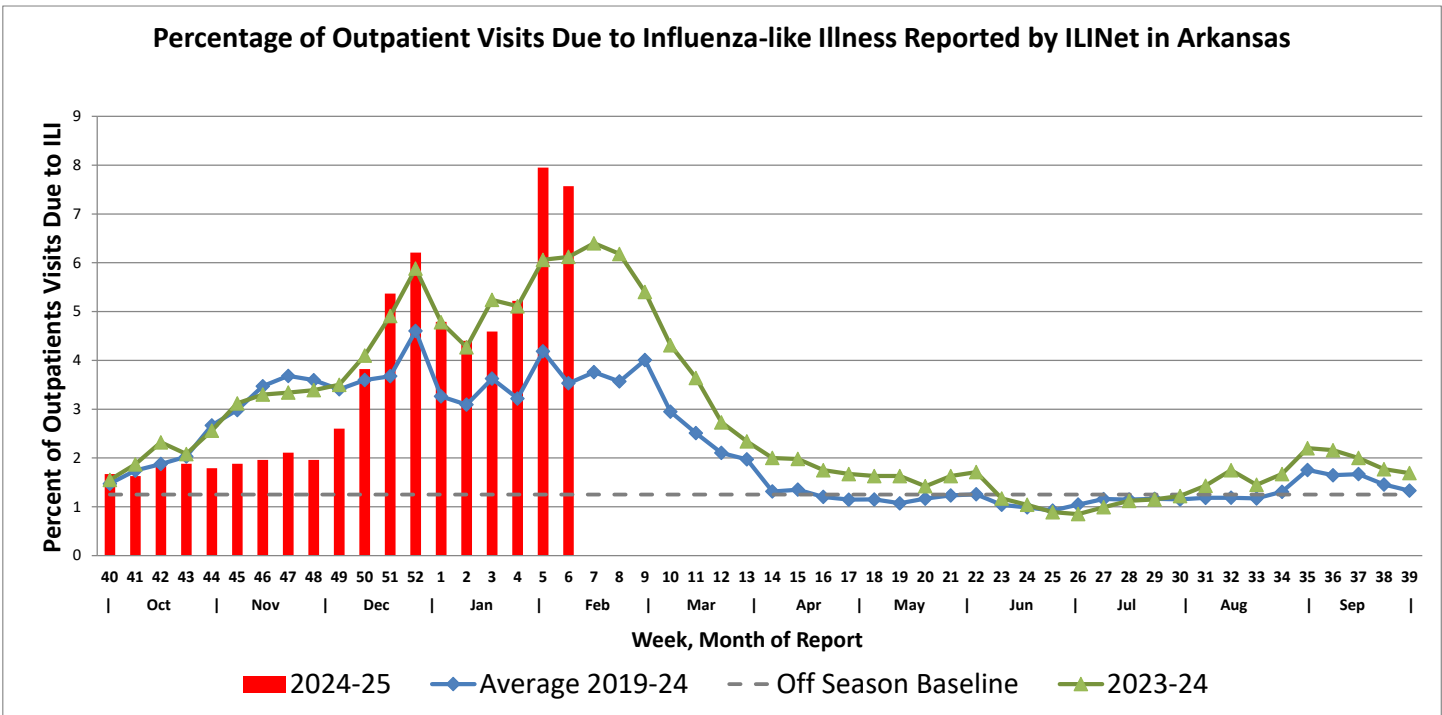


Emergency Department Visits for ILI, CLI and RSV, Arkansas Data Downloaded from NSSP (Syndromic Surveillance)

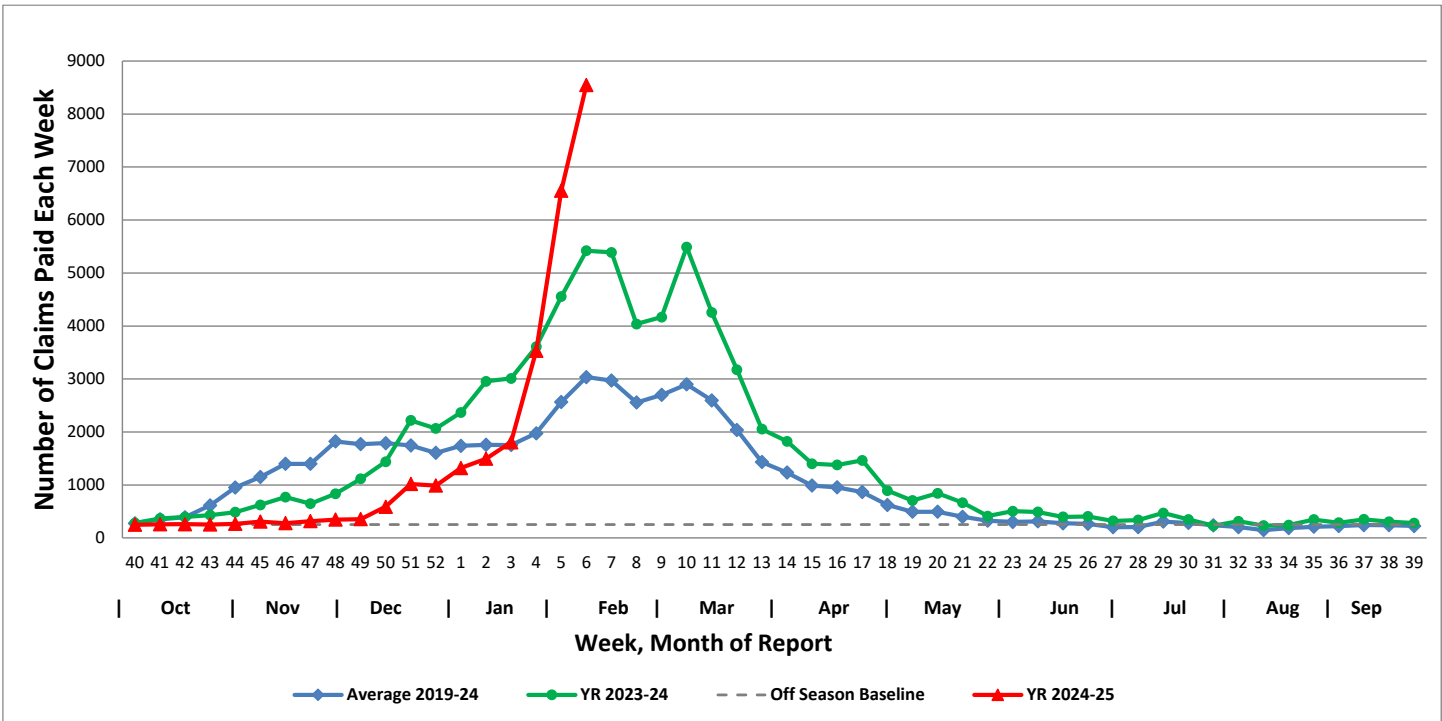


Arkansas Subset of US Outpatient Influenza Surveillance (ILINET)

Percentage of Outpatient Visits Due to Influenza-like Illness Reported by ILINet in Arkansas

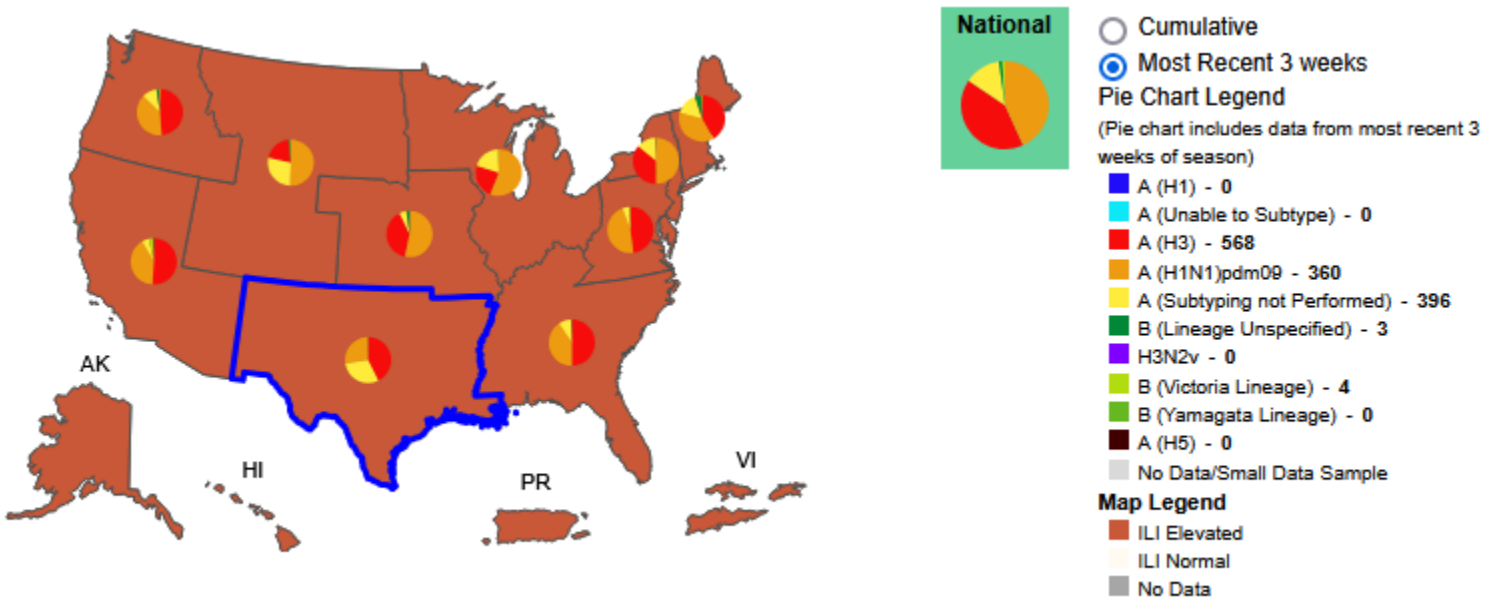


Weekly Influenza Claims Paid by Medicaid and BCBS of Arkansas



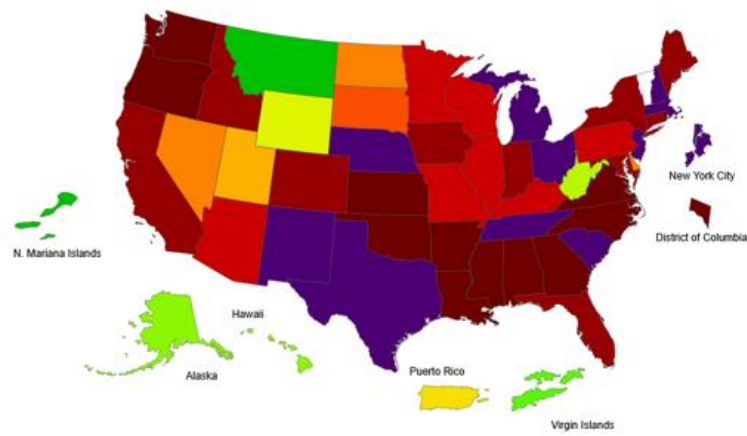
Influenza Positive Tests Reported to CDC and ILI Activity, by HHS Region Public Health Labs, Week Ending Feb 01, 2025

Values in legend are for the highlighted HHS region (Region 6) for the most recent 3 weeks.



Data Source: CDC, ILINet

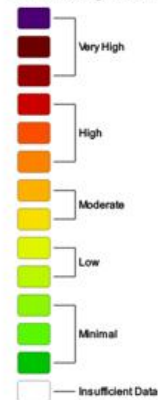
Influenza-Like-Illness Activity Level Indicator Determined by Data Reported to ILINet



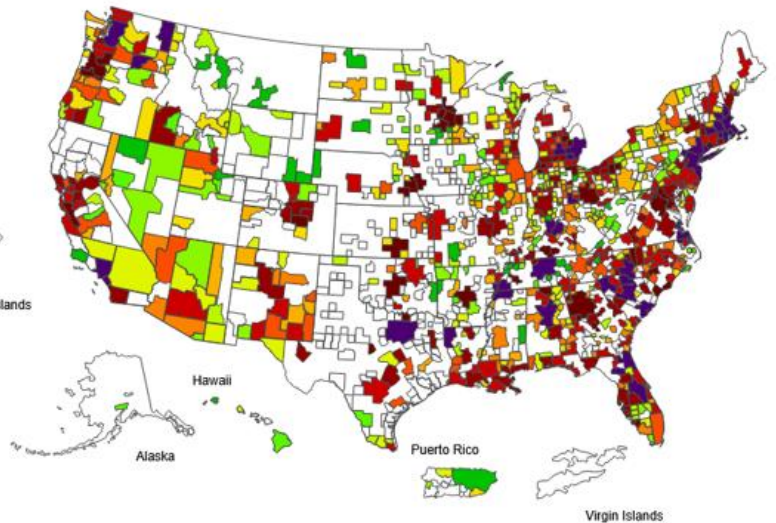
ILI Activity Map by Jurisdiction
Week 5, ending Feb 01, 2025

This system monitors visits for ILI (fever and cough or sore throat), not laboratory confirmed influenza and may capture patient visits due to other respiratory pathogens that cause similar symptoms.

ILI Activity Level

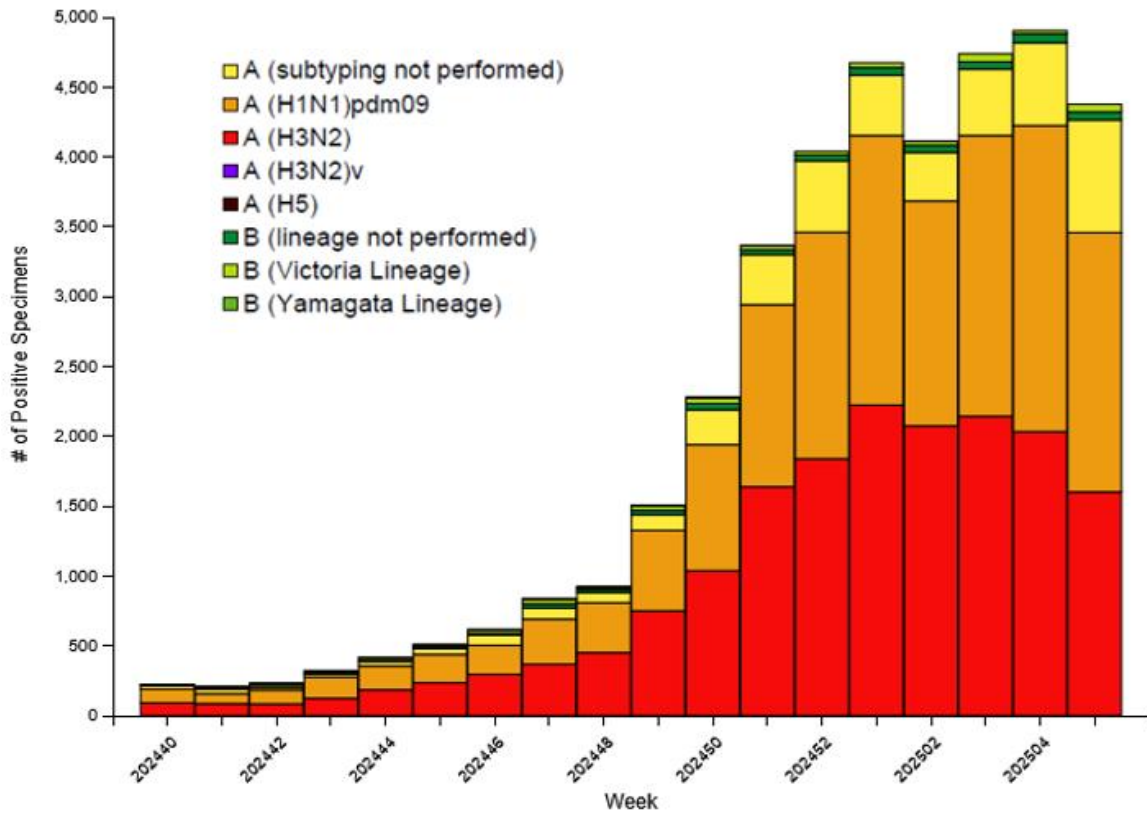


ILI Activity Map by CBSA
Week 5, ending Feb 01, 2025

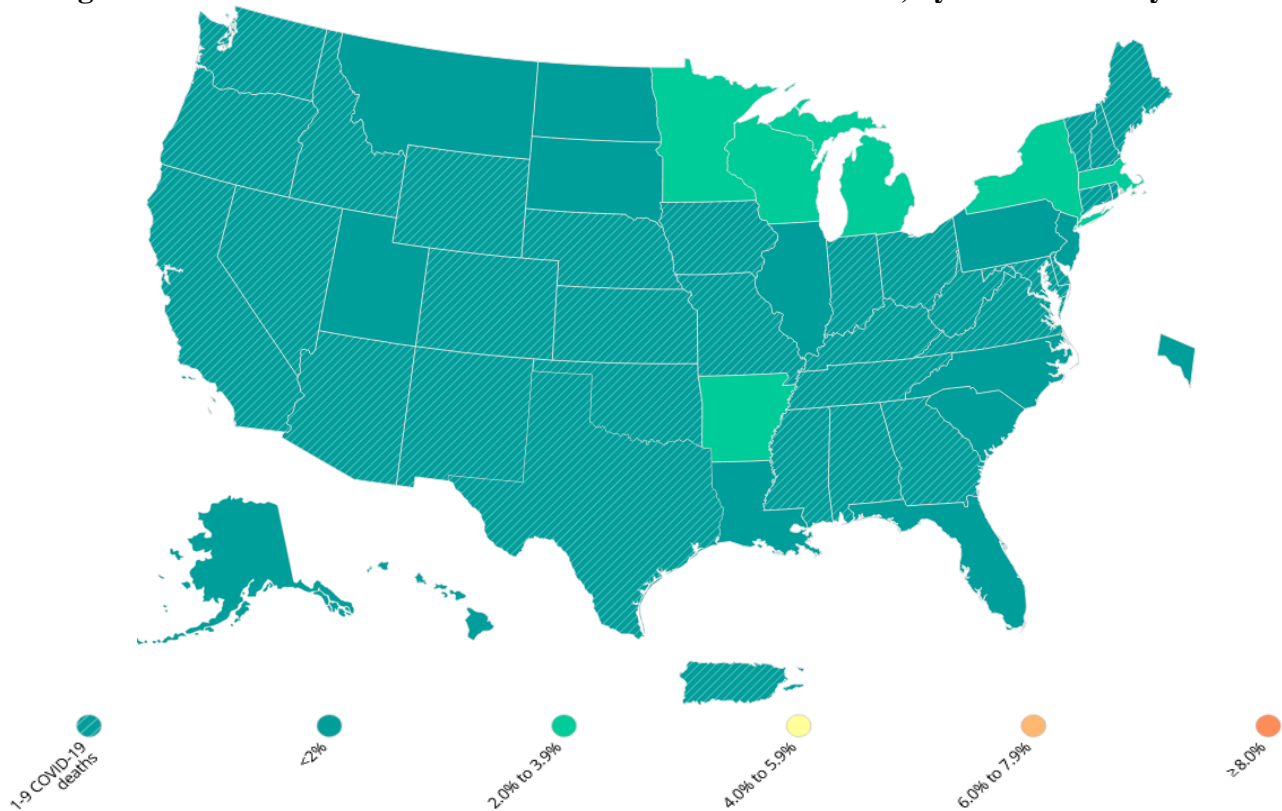


Data Source: CDC, ILINet

Influenza Positive Tests Reported to CDC by U.S. Public Health Laboratories, National Summary, 2024-2025 Season, week ending February 01, 2025

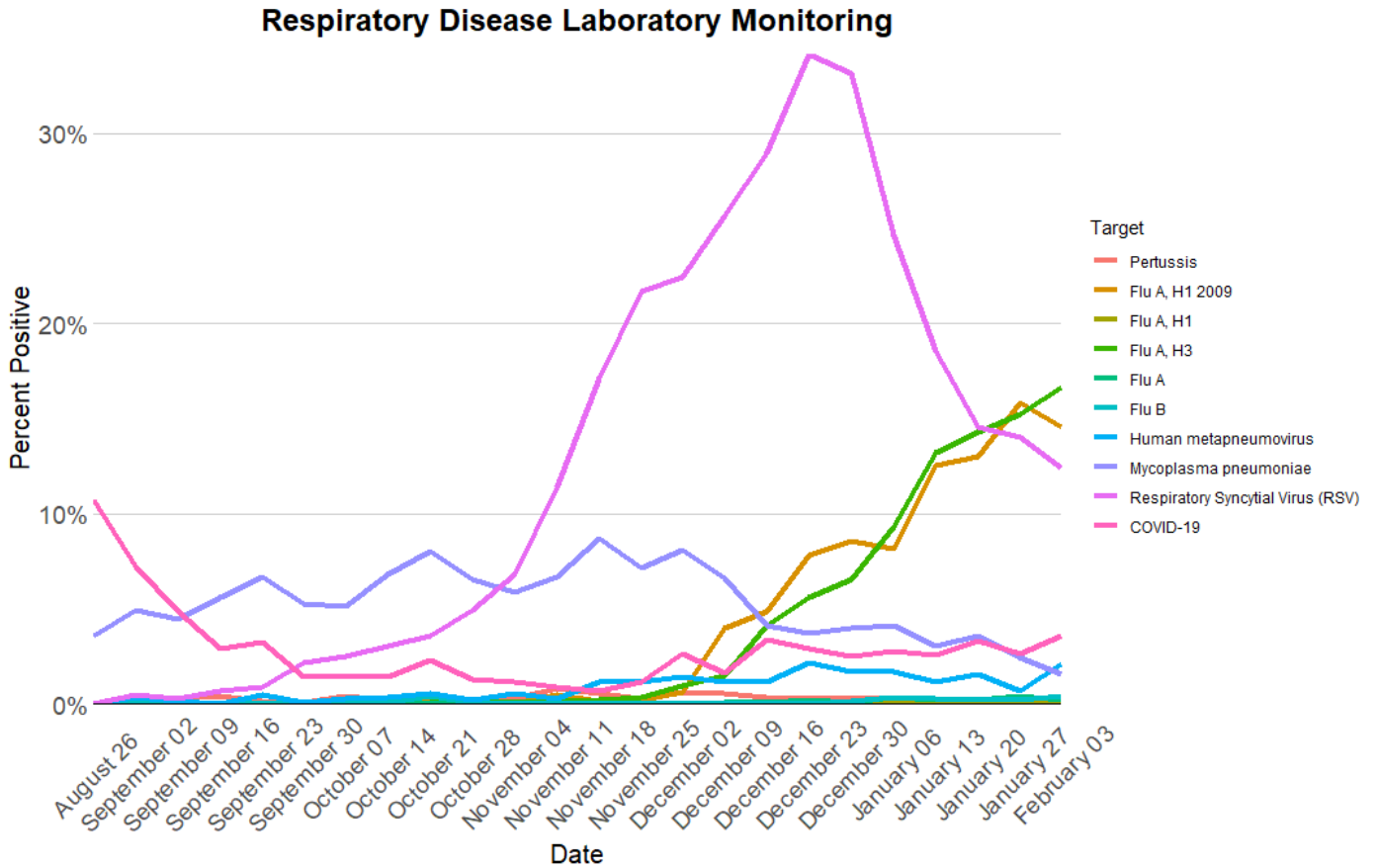


Percentage of Provisional Deaths Due to COVID-19 in the Past Week, by State/Territory – United States



Source: https://covid.cdc.gov/covid-data-tracker/#maps_percent-covid-deaths

Respiratory Diseases Trend in Children seen at Arkansas Children’s Hospitals



The figure above shows the trends over time in percent positivity for certain respiratory diseases in children seen at Arkansas Children’s Hospital located in Little Rock and Arkansas Children’s Northwest in Springdale as well as the Arkansas Children’s clinics located around the state. Percent positivity is defined as the total number of positive tests for a particular respiratory disease divided by the total number of tests done for that same disease multiplied by 100. The figure shows that positivity for RSV increased sharply in October and is currently trending down to over 12%. Influenza is trending up, Flu A, H3 currently is at 17%, Flu A, H1 2009 is at 15%. Mycoplasma pneumoniae, COVID, Pertussis and Human metapneumovirus vary in their test positivity, but all are still below 10%.