



# ARKANSAS DEPARTMENT OF HEALTH

**Renee Mallory, RN, BSN**  
Secretary of Health

**Jennifer Dillaha, MD**  
Director

## Viral Respiratory Diseases Weekly Report 2024-2025

---

**Week Ending Saturday 04/05/2025**

---

**Mike Cima, PhD**  
State Epidemiologist

**Austin Porter III, DrPH, MPH**  
Deputy Chief Science Officer  
Deputy State Epidemiologist

**Prepared by:**

**Haytham Safi, MD, MPH**  
Epidemiology Supervisor  
Influenza Surveillance Coordinator  
[Haytham.Safi@Arkansas.gov](mailto:Haytham.Safi@Arkansas.gov)  
501-661-2920

**Reviewed by:**

**Lori Simmons, MS**  
Branch Chief, Epidemiology

**April 9, 2025**

The Arkansas Department of Health (ADH) produces a Weekly Viral Respiratory Diseases Report for clinicians. The report provides information on Influenza, COVID-19 and Respiratory Syncytial Virus (RSV) activity in the state. The report also compares activities in Arkansas to the U.S. ADH receives reports of only a fraction of COVID-19 cases and flu cases since it only requires reports of flu hospitalizations, deaths, and outbreaks. RSV is not a reportable disease in Arkansas. Therefore, it is important to understand that the information in the weekly update is representative of the timing and location of activity, but it does not reflect the overall disease burden. It is presumed that there are many more people actually affected than the report shows. Clinicians and policymakers may find the report helpful in terms of communicating to colleagues and patients about the current status of viral respiratory diseases in the state and nationwide.

### **Report Key Points for Week 14:**

- Arkansas reported “Minimal” or 1 out of 13 for the Influenza-Like-Illness (ILI) activity level indicator determined by data reported to ILINet.
- Hospital Emergency Department visits reported through Syndromic Surveillance were at 1.94% for Influenza-Like-Illness (ILI), 1.17% for COVID-Like-Illness (CLI), and 0.15% for Respiratory Syncytial Virus (RSV).
- Outpatient visits for ILI reported through ILINet from the Sentinel Providers were at 1.46%.
- Arkansas Children’s Hospitals and associated clinic locations in central and northwest Arkansas report Human metapneumovirus test positivity with an increase to about 8%; RSV is currently at 4%; COVID -19, Flu A, H3 and Flu A, H1 2009 are below 4%.
- The average school absenteeism rate last week was 8.26% among public schools.
- Arkansas reported 171 influenza-related deaths this season including 3 pediatric deaths, 78.4% of them were not vaccinated.
- Nationally, CDC estimates that there have been at least 45 million illnesses, 580,000 hospitalizations, and 25,000 deaths from flu so far this season.
- Arkansas reported no COVID-19-related deaths this week. There was a total of 533 COVID-19-related deaths in 2024. Since January 1, 2025 there have been 119 COVID-19-related deaths. The weekly deaths reflect week reported, not date of death.
- This flu season, 50 influenza outbreaks have been reported from nursing homes or other congregate setting institutions.
- Nationally, the proportion of deaths reported to the National Center for Health Statistics that were attributed to pneumonia, influenza and COVID-19 (PIC) was below the epidemic threshold this week.

**You can report flu year-round and view the Viral Respiratory Disease Weekly Report during the influenza season at:**  
<http://www.healthy.arkansas.gov/programs-services/topics/influenza>. You can also access the reporting website directly at:  
<https://FluReport.ADH.Arkansas.gov>.

**For additional national and international influenza and other respiratory diseases surveillance information:**

**World Health Organization (WHO):** <https://www.who.int/tools/flunet>

**CDC - Seasonal influenza (Flu) - Weekly Report:** <https://www.cdc.gov/fluview/index.html>

**Other respiratory viruses:** visit the national respiratory and enteric virus surveillance system (NREVSS):  
<https://www.cdc.gov/surveillance/nrevss/index.html>

# 2024-2025 Viral Respiratory Diseases Weekly Report (Week 14: 03/30/2025 – 04/05/2025)

## Deaths Reported for Week 14\*

\* Deaths reflect week reported not date of death.

- Deaths from all causes: 726
- Deaths due to Pneumonia: 63
- Deaths due to Flu: 5
- COVID-19 Related Deaths: 0

## Cumulative Deaths

- Total Flu deaths since 09/29/24: 171
- Total COVID deaths in 2024: 533
- Total COVID deaths since 01/01/25: 119

## New Hospital Admissions Reports

- Flu Admissions: 03/30/25 - 04/05/25: 28
- Flu Admissions Prior to 03/30/25  
Reported this Week: 20
- COVID Week ending 04/05/2025: 41

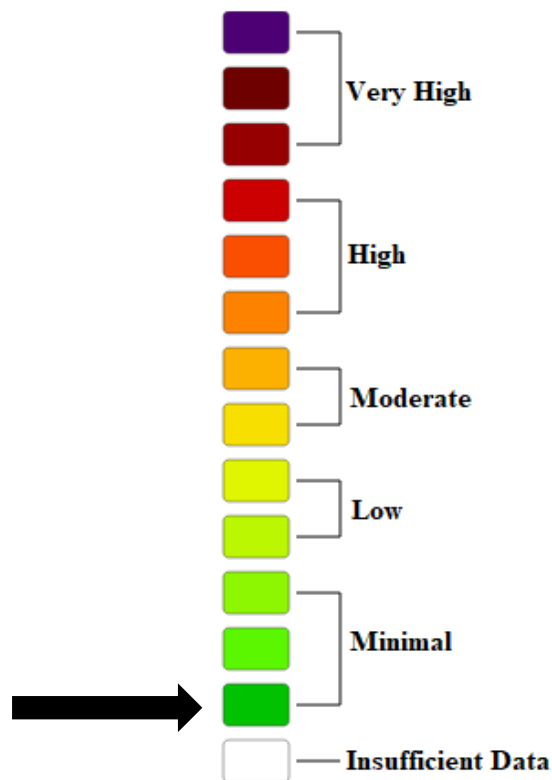
## School Absenteeism\*

\* Average daily absenteeism for all public schools during this reporting week.

Week Ending: 04/05/2025

- Percent Absent: 8.26
- Previous Week: No report, spring break

## Weekly Arkansas ILI Intensity Level Reported by Sentinel Providers



## Lab Confirmed Influenza Cases

Reported flu cases reflect only a portion of the actual numbers of flu cases in the state.

Tests	Week 14	Cumulative Cases Since 09/29/2024
Flu A+	75	15,868
Flu B+	37	1,425
Flu A and B	12	181
Flu B/Victoria	0	0
Flu B/ Yamagata	0	0
Flu A, H1N1+	5	385
Flu A, H3+	1	341
Unsubtypeable	0	0
<b>Total</b>	<b>130</b>	<b>18,200</b>

## Influenza Reported Hospitalization and Death Cumulative Cases Since 09/29/2024

Age Groups	Hospitalized	Deaths
0-4 yr.	128	0
5-17 yr.	110	3
18-24 yr.	57	0
25-44 yr.	264	9
45-64 yr.	908	41
>= 65 yr.	1,845	118
Unknown	0	0
<b>Total</b>	<b>3,312</b>	<b>171</b>

## ER Visits (Syndromic Surveillance)

### **Week Ending: 04/05/2025:**

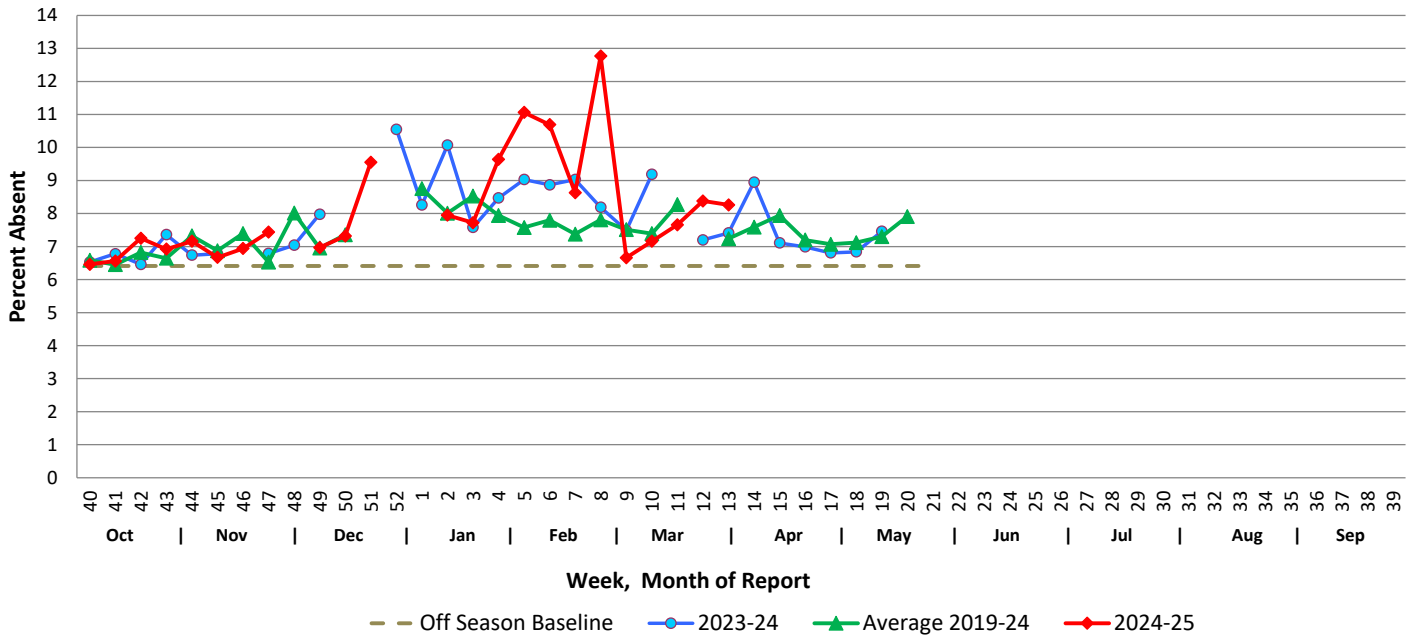
- Total (% of Visits)
- Total ER Visits: 11,050
  - Visits with ILI: 214 (1.94%)
  - Visits with CLI: 129 (1.17%)
  - Visits with RSV: 17 (0.15%)

### **Previous Week:**

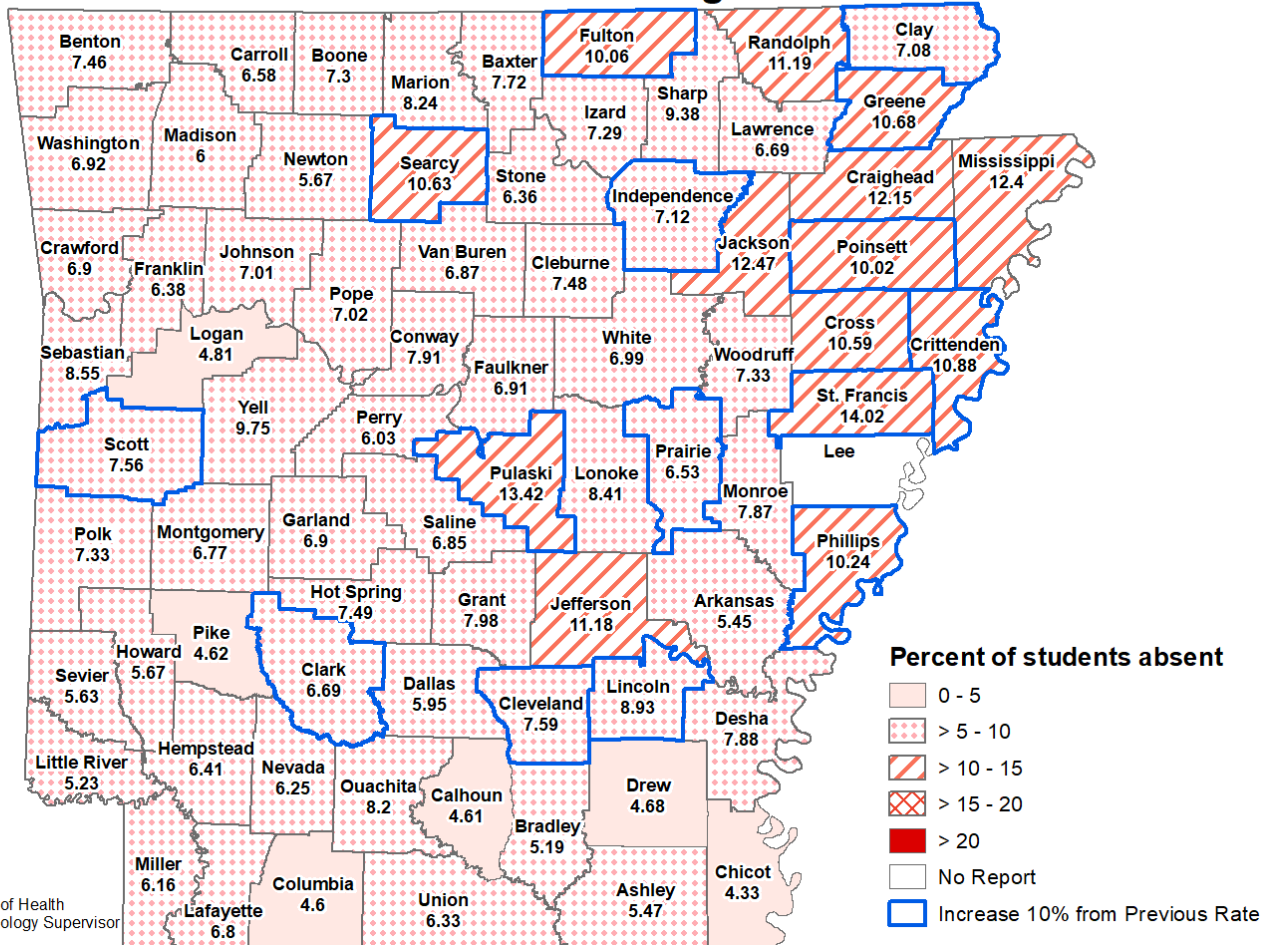
- Total (% of Visits)
- Total ER Visits: 11,716
  - Visits with ILI: 305 (2.60%)
  - Visits with CLI: 172 (1.47%)
  - Visits with RSV: 22 (0.19%)

# Schools Report

## Weekly School Absenteeism Rates, Arkansas Public Schools



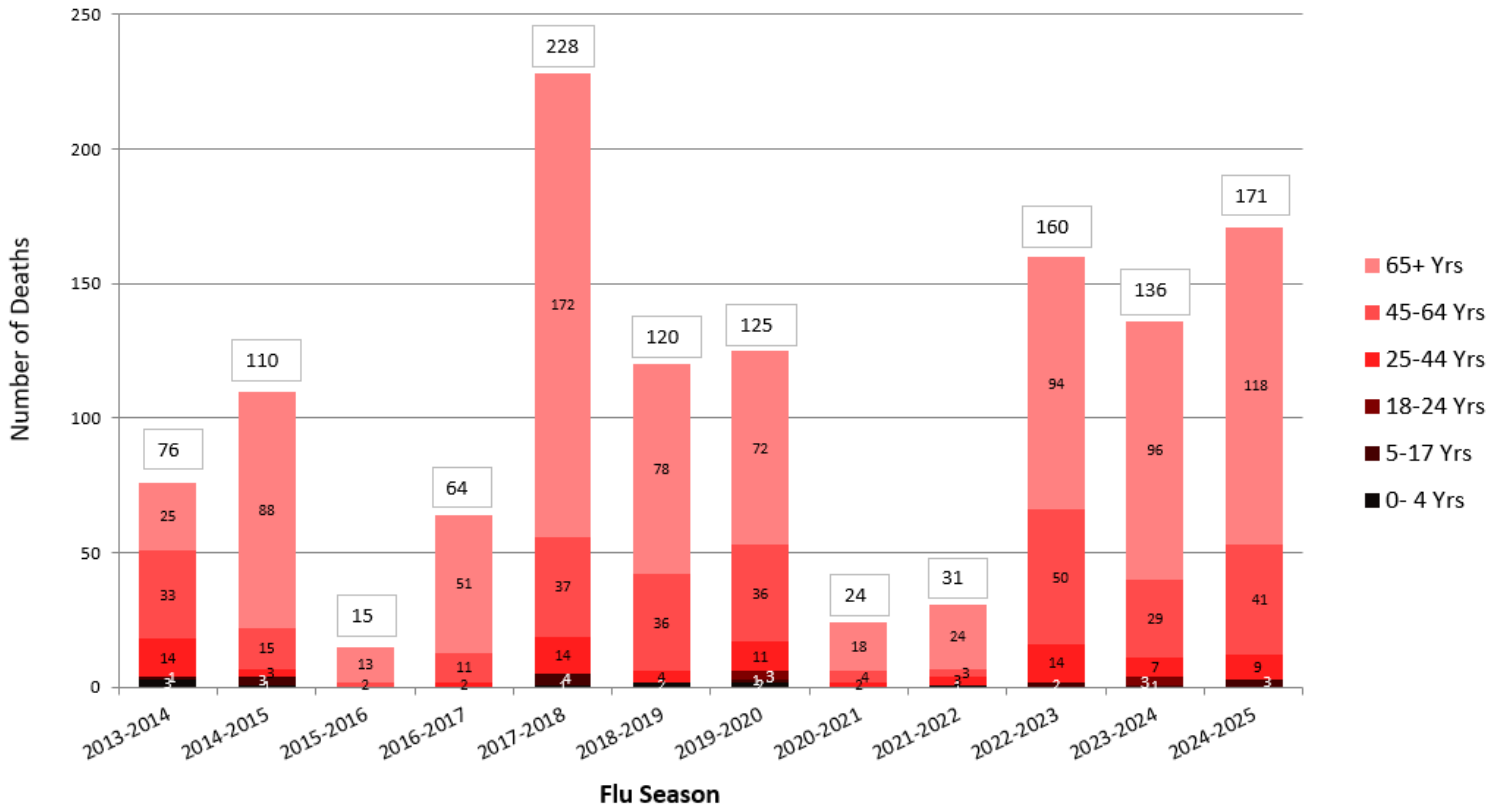
## School Absenteeism Rate per County, Arkansas 2024-2025 Percent Absent for Week Ending 4/4/2025



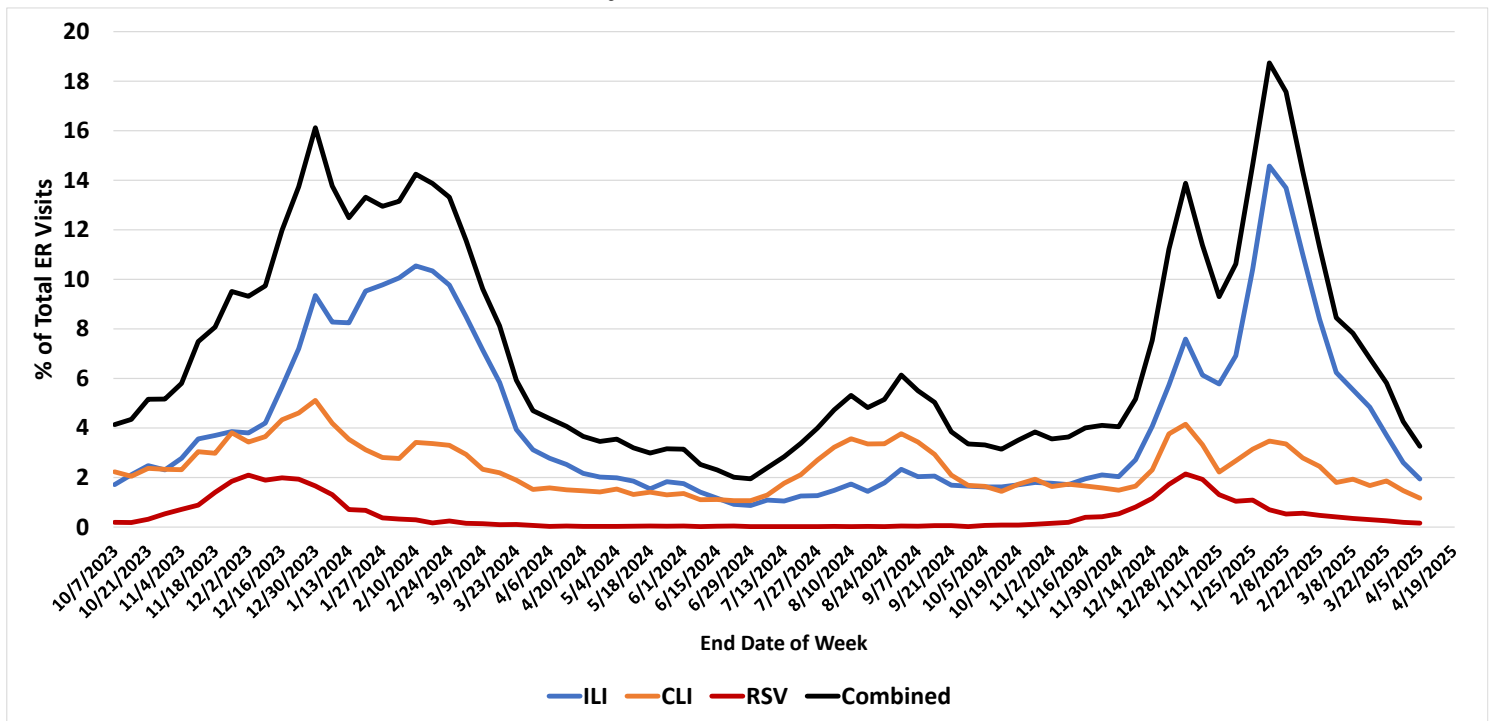
Date: April 8, 2025  
 Source: Arkansas Department of Health  
 Author: Haytham Safi, Epidemiology Supervisor

# Influenza Mortality by Age Group, Arkansas 2013-2025 (Provisional)

Report Updated: 04/09/2025

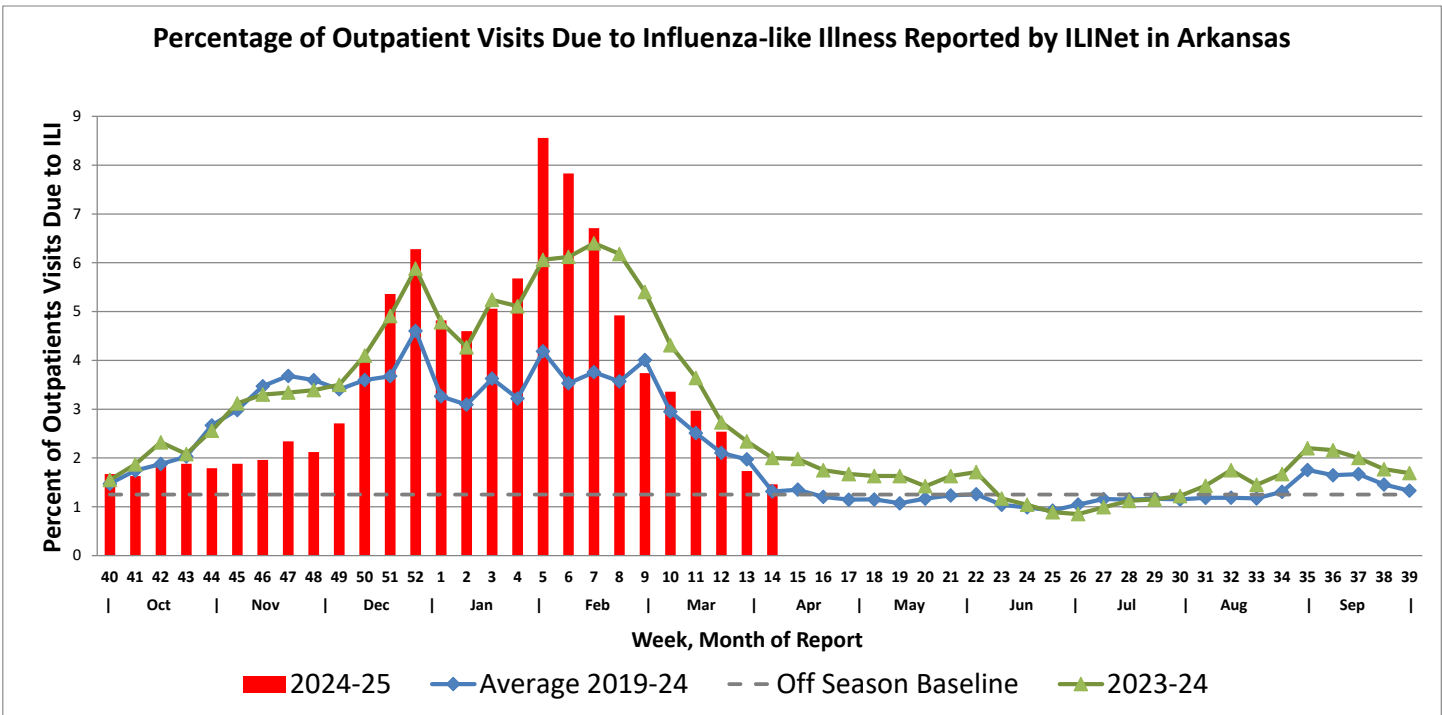


## Emergency Department Visits for ILI, CLI and RSV, Arkansas Data Downloaded from NSSP (Syndromic Surveillance)

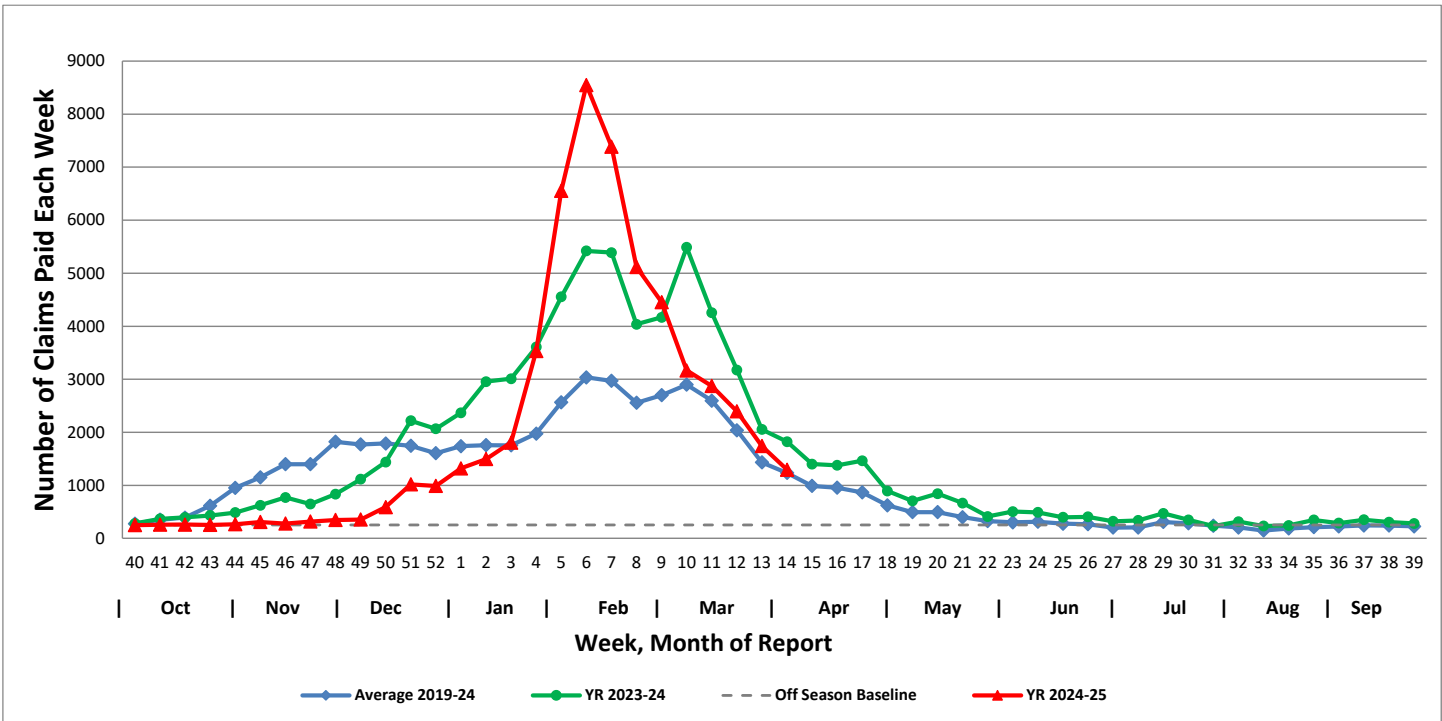


# Arkansas Subset of US Outpatient Influenza Surveillance (ILINET)

## Percentage of Outpatient Visits Due to Influenza-like Illness Reported by ILINet in Arkansas

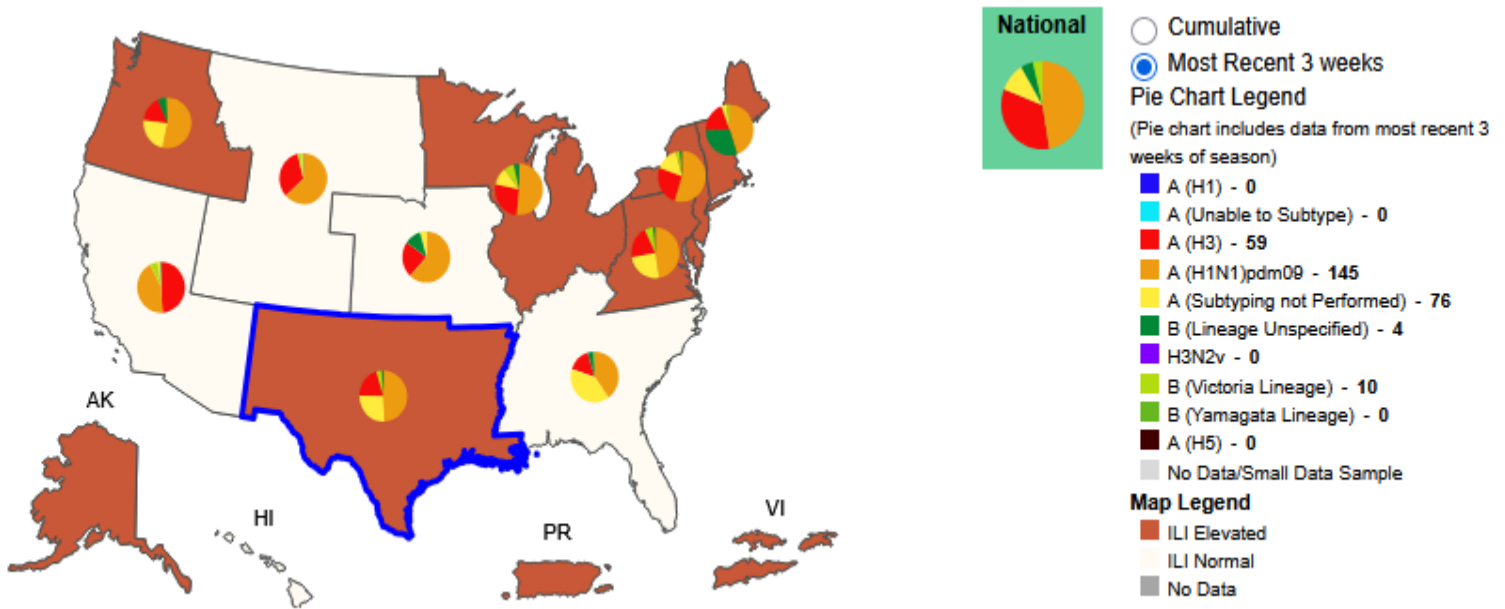


# Weekly Influenza Claims Paid by Medicaid and BCBS of Arkansas



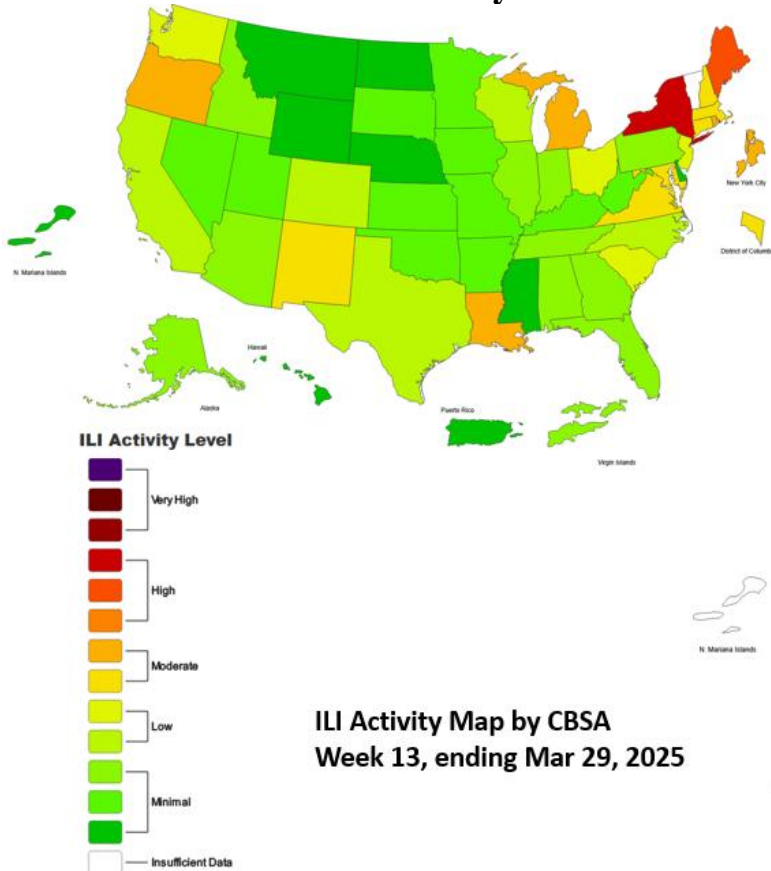
# Influenza Positive Tests Reported to CDC and ILI Activity, by HHS Region Public Health Labs, Week Ending Mar 29, 2025

Values in legend are for the highlighted HHS region (Region 6) for the most recent 3 weeks.



Data Source: CDC, ILINet

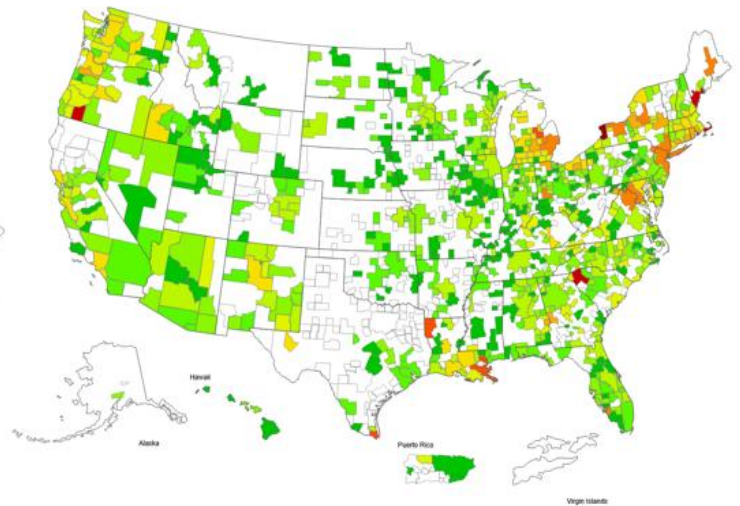
## Influenza-Like-Illness Activity Level Indicator Determined by Data Reported to ILINet



ILI Activity Map by Jurisdiction  
Week 13, ending Mar 29, 2025

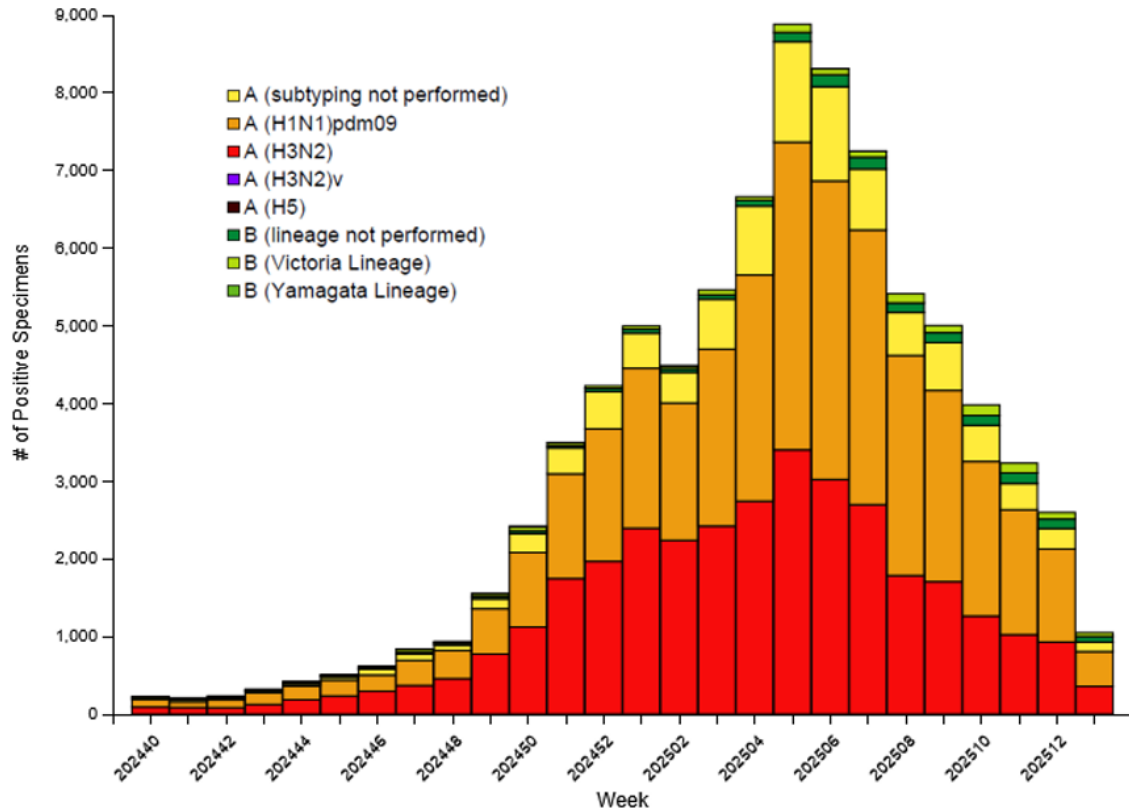
This system monitors visits for ILI (fever and cough or sore throat), not laboratory confirmed influenza and may capture patient visits due to other respiratory pathogens that cause similar symptoms.

ILI Activity Map by CBSA  
Week 13, ending Mar 29, 2025

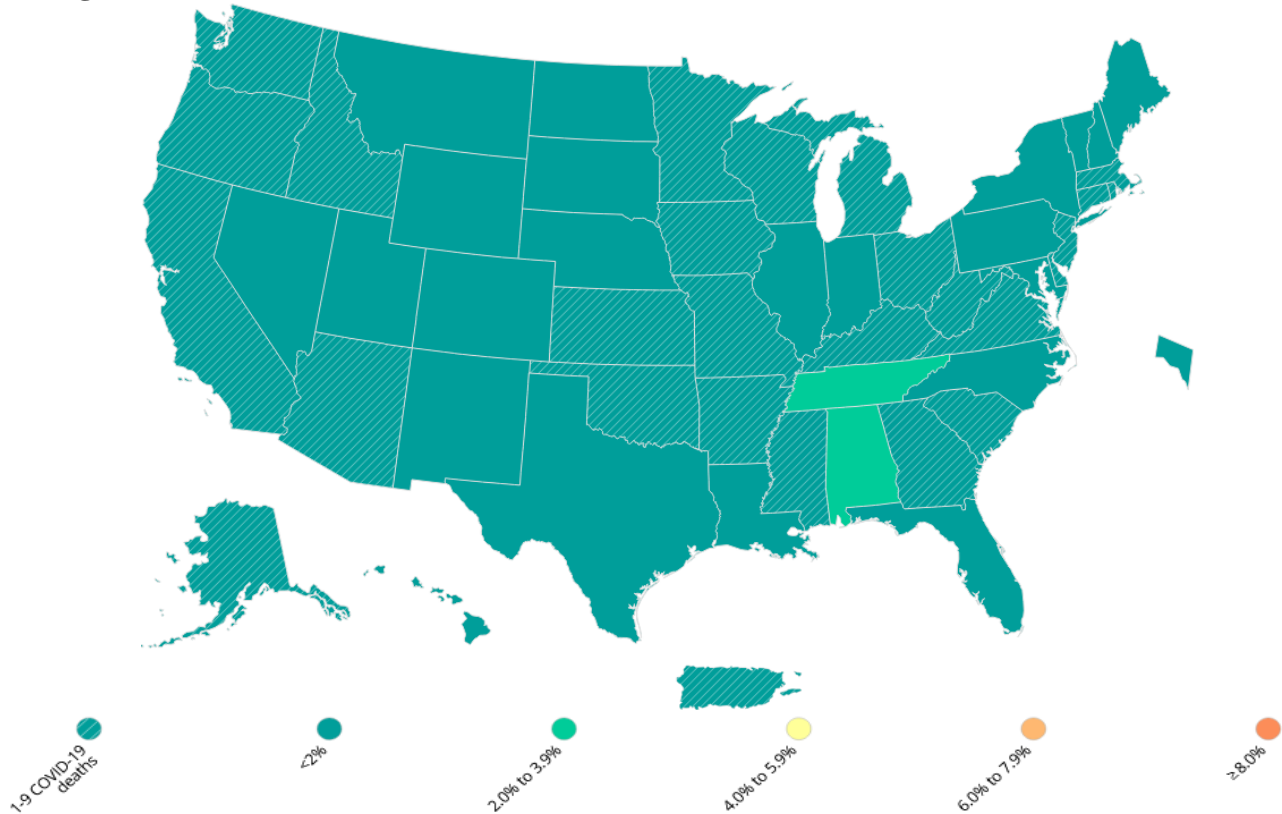


Data Source: CDC, ILINet

## Influenza Positive Tests Reported to CDC by U.S. Public Health Laboratories, National Summary, 2024-2025 Season, week ending Mar 29, 2025



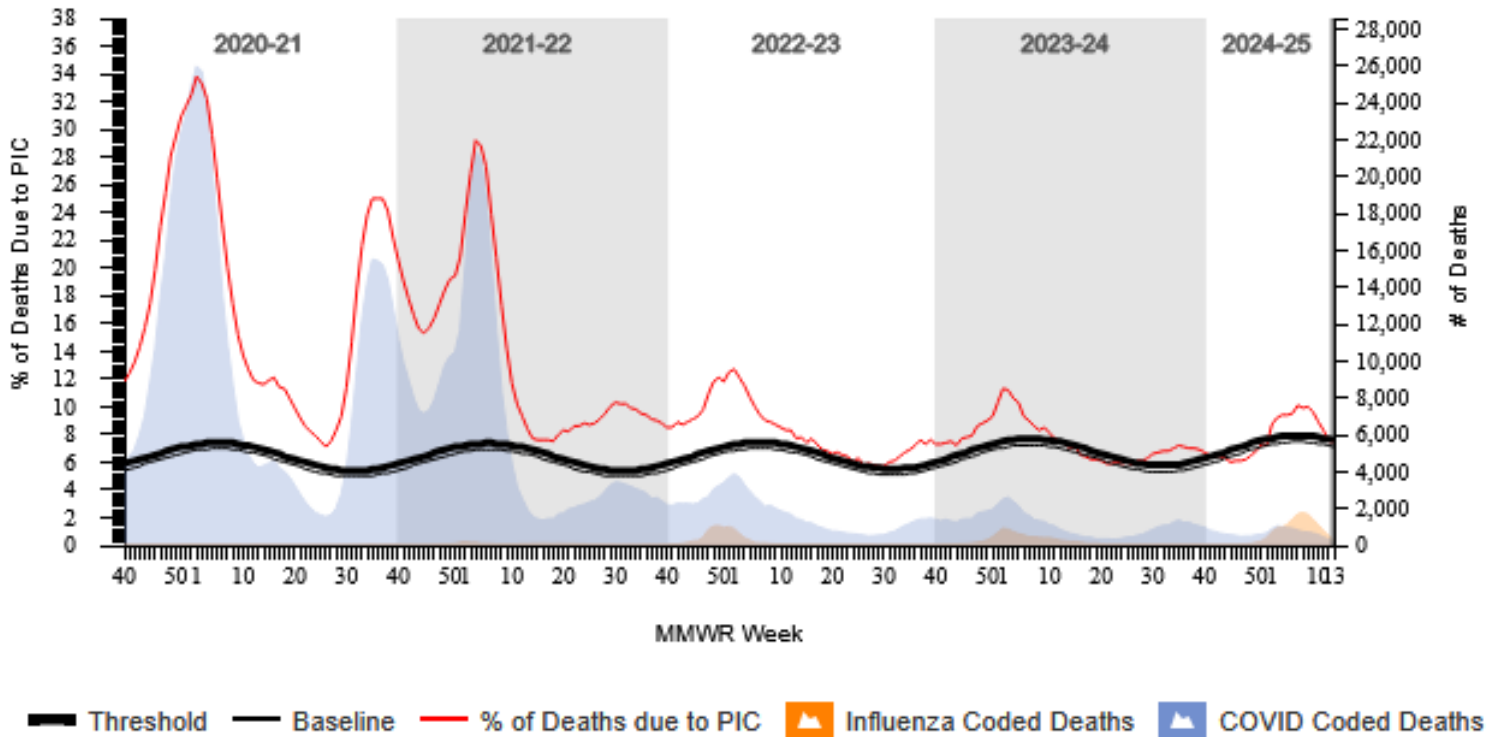
## Percentage of Provisional Deaths Due to COVID-19 in the Past Week, by State/Territory – United States



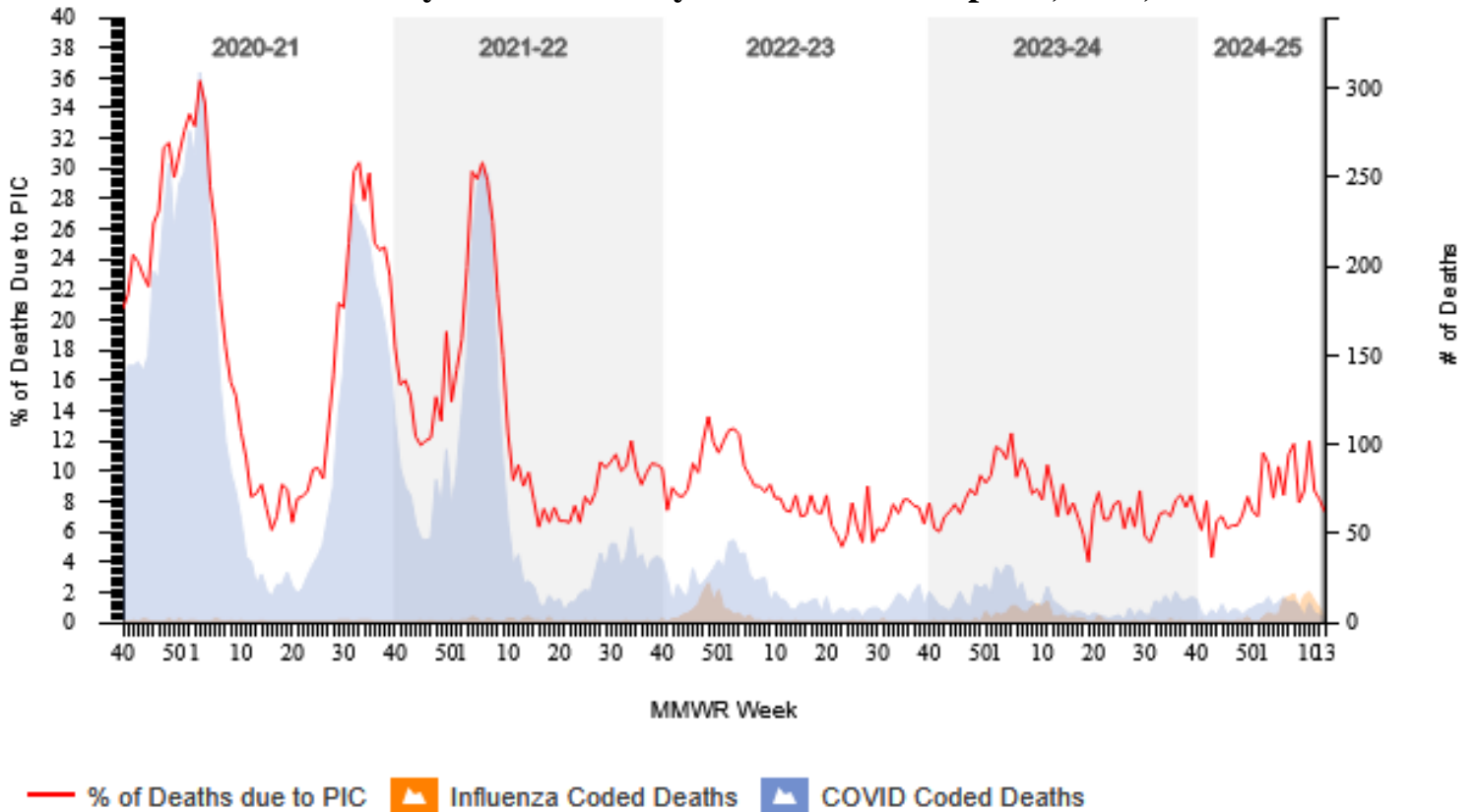
Source: [https://covid.cdc.gov/covid-data-tracker/#maps\\_percent-covid-deaths](https://covid.cdc.gov/covid-data-tracker/#maps_percent-covid-deaths)



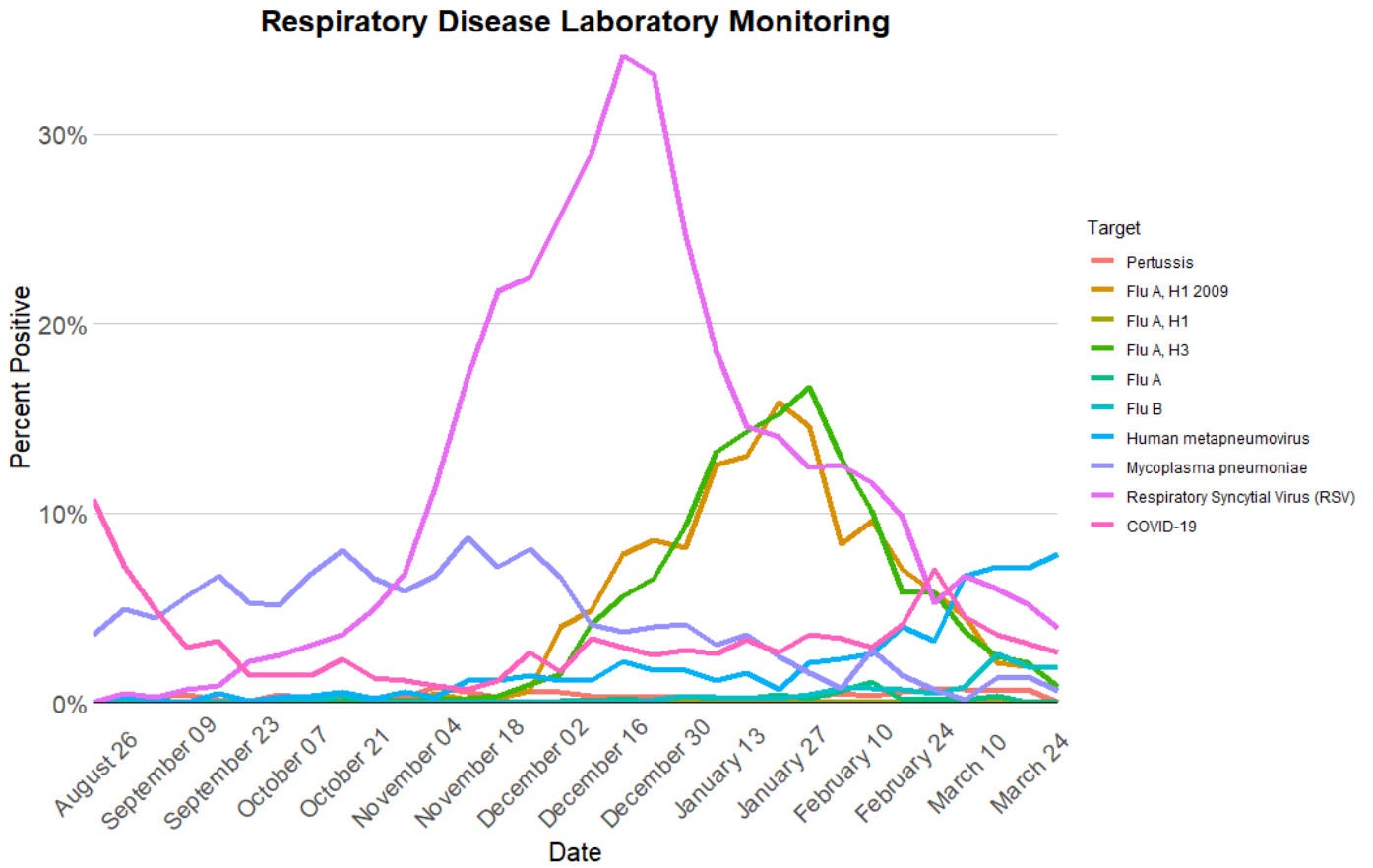
**Pneumonia, Influenza and COVID-19 (PIC) Mortality from the National Center for Health Statistics Mortality Surveillance System Data as of Apr 03, 2025, National Data**



**Pneumonia, Influenza and COVID-19 (PIC) Mortality from the National Center for Health Statistics Mortality Surveillance System Data as of Apr 03, 2025, Arkansas Data**



# Respiratory Diseases Trend in Children seen at Arkansas Children’s Hospitals



The figure above shows the trends over time in percent positivity for certain respiratory diseases in children seen at Arkansas Children’s Hospital located in Little Rock and Arkansas Children’s Northwest in Springdale as well as the Arkansas Children’s clinics located around the state. Percent positivity is defined as the total number of positive tests for a particular respiratory disease divided by the total number of tests done for that same disease multiplied by 100. The figure shows that test positivity for Human metapneumovirus increased to about 8%. RSV is currently at 4%. Influenza A H1 2009, Influenza A H3 and COVID-19, Mycoplasma pneumoniae and Pertussis are below 4%.