

# Trigger Points for Rule-Out



Complete all work in a Biosafety Cabinet if the following is observed.

**1 All BT Agents**  
Growth in Blood Culture bottle after 36 hours “slow grower”.

**You are the first line of defense - refer to current ASM Sentinel Lab Protocols.**

**RULE-OUT & REFER**  
**RULE-OUT & REFER**  
**RULE-OUT & REFER**  
**RULE-OUT & REFER**  
**RULE-OUT & REFER**

*Brucella spp.*



Gram negative rods with no growth on MAC.

*Burkholderia mallei*



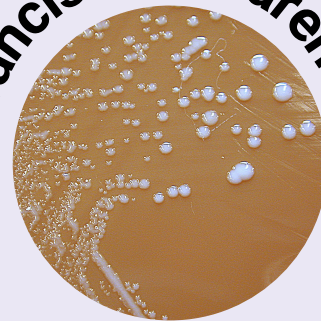
Gram negative rods with little growth on MAC.

*Burkholderia pseudomallei*



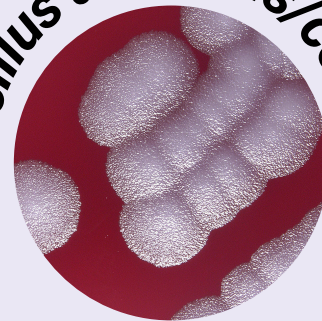
Wrinkled appearance of colonies.

*Francisella tularensis*



Gram negative rods/coccobacillus growth on CHOC only.  
No growth on MAC.

*Bacillus anthracis/cereus*



Large gram positive rods with/without spores with slight or no hemolysis on BAP.  
Ground glass appearance of colonies.

*Yersinia pestis*



Gram negative rods that grow better at 25 C.  
Colonies with “fried egg appearance”.