

# ARKANSAS CENTRAL CANCER REGISTRY

November 2025 Monthly Newsletter



NOVEMBER IS

National Family  
Caregivers Month

## Honoring Cancer Patient Caregivers During the Month of Thanks

November is recognized as **National Family Caregivers Month**, a time to honor the dedication and compassion of those who selflessly care for others. It is with deep gratitude that we take this opportunity to recognize and celebrate cancer patient caregivers—the unsung heroes who play a vital role in the journey of those facing cancer.

According to the **National Cancer Institute (NCI)**, a caregiver is defined as "a person who gives care to people who need help taking care of themselves." This includes individuals caring for children, the elderly, or those living with chronic illnesses or disabilities. Caregivers may be health professionals, family members, friends, social workers, or clergy, providing care at home, in hospitals, or in other healthcare settings.

Caring for someone with cancer is both an act of love and a demanding responsibility. Cancer patient caregivers often face significant emotional and physical challenges, which can lead to what is known as **caregiver burden**—the stress or strain experienced while supporting a loved one through illness or treatment.

This November, let us take a moment to reflect on the strength, resilience, and compassion of caregivers. Whether through a kind word, a note of appreciation, or offering a helping hand, **please honor and give thanks** to those in your life who serve as caregivers to cancer patients. Their support is invaluable, and their presence makes a profound difference in the lives of those they care for.



## DID YOU KNOW?

30-50% of cancer cases are preventable. According to the World Health Organization, the following behaviors can help reduce the risk of cancer:

- maintaining a healthy weight
- eating plenty of fruits and vegetables
- exercising regularly
- avoiding tobacco use
- limiting alcohol use



Source: [World Health Organization. "Cancer Prevention." who.int/cancer/prevention/en/. Accessed January 31, 2020.]

Internationally the first ever Hormone Dependent Cancer Conference is taking place in York, United Kingdom, November 17 and 18th, through the Society for Endocrinology.



The goal of the conference is to provide up to date information on the latest research and clinical techniques for hormone dependent cancers, such as breast and prostate.

## RULES FOR ARKANSAS CANCER CASE REPORTING

In accordance with Arkansas cancer reporting law, all licensed health care facilities and providers are required to report cancer cases to the ACCR no later than six months after the date of diagnosis of cancer and/or initial treatment of cancer.

All cancer cases that were diagnosed or began initial treatment on or before **May 31, 2025**, are due this month. Cases must be reported via Web Plus.

Month	Abstract due to ACCR	Recommended Month Facility conducts Patient Follow-up	Follow-Up and Case Update sent to ACCR
April 2025	October 2025	April 2026	May 1
<b>May 2025</b>	<b>November 2025</b>	<b>May 2026</b>	<b>June 1</b>
June 2025	December 2025	June 2026	July 1

## ACCR EDUCATIONAL WEBINAR SERIES



Topic: Year in Review!

Presenter: Janet Raleigh, ODS-C

Date/Time: December 9, 2025 @ 12 pm CST

Registration via: FLccSC

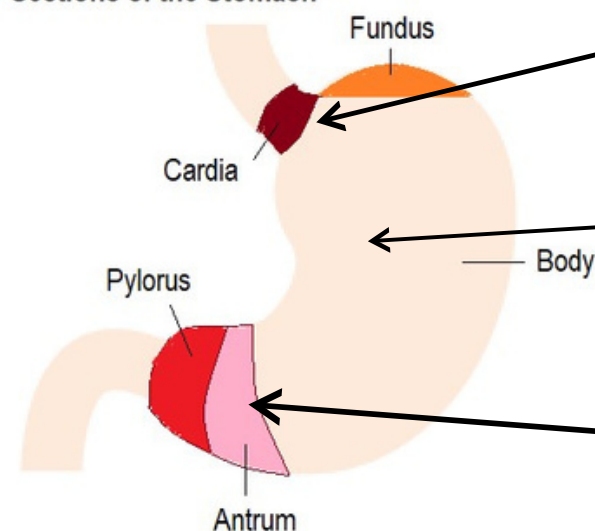


In December, our presentation will cover 2025 webinar highlights, updates, and additional tips. With each ACCR webinar, you can earn 1 Category A CE credit by viewing the webinar and completing the quiz in FLccSC.

Please reach out to [Janet Raleigh](#), Educational Content Manager, or [Melissa Chapman](#), Education & Training Coordinator, with any questions.

## MONTHLY ABTRACTOR TIPS – STOMACH

Sections of the Stomach



- C160
- *Cardia, GEJ (gastroesophageal junction)*

- C162
- *Body of stomach, Corpus, Gastric corpus*

- C163
- *Gastric antrum, Pyloric antrum*

Review the Solid Tumor Rules Manual, Table 6: Stomach Histologies, for additional terms describing topography coding for C160-C169. Let's review some histology coding nuances!

**HISTOLOGY:** When both *Laurén* and WHO histologies are stated, code the WHO diagnosis.



Exception: If WHO diagnosis is adenocarcinoma NOS and *Laurén* indicates a more specific type, code the specific histology.

The *Laurén* classification separates gastric adenocarcinomas into two primary subtypes:

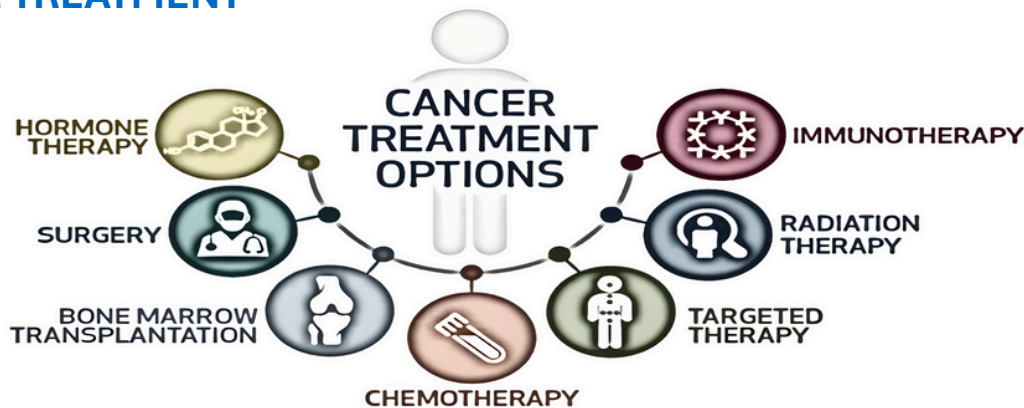
- Intestinal – exhibits components of glandular, solid or intestinal architecture, as well as tubular structures
- Diffuse – demonstrates single cells or poorly cohesive cells infiltrating the gastric wall

ADENOCARCINOMA NOS 8140 Regardless of percent: →	<ul style="list-style-type: none"> <li>• Code mucinous carcinoma 8480</li> <li>• Code signet ring cell 8490</li> </ul>
Gastrointestinal stromal tumor 8936 Some synonyms include:	<ul style="list-style-type: none"> <li>• GANT</li> <li>• GIST NOS</li> <li>• GIST, malignant</li> <li>• Succinate dehydrogenase-deficient gastrointestinal stromal tumor</li> </ul>
Neuroendocrine tumor NOS 8240/3 Some synonyms include:	<ul style="list-style-type: none"> <li>• Carcinoid</li> <li>• Neuroendocrine tumor, grade 1</li> <li>• Well differentiated endocrine tumor/carcinoma</li> </ul>



Take note! In the table above, the behavior code /3 is specified for the Neuroendocrine tumor NOS histology only. Behavior codes are listed when the term has only one possible behavior (either /2 or /3). When the histology may be either /2 or /3, a behavior is not listed. Code the behavior from the pathology report.

## FIRST COURSE TREATMENT



All methods of treatment recorded in the plan administered prior to disease progression or recurrence

**Active surveillance, aka 'Watchful Waiting':**  
Record as treatment when no other treatment fields are recorded  
Decision for surveillance only is recorded as the Date of First Course Treatment

## DATA FIELD ENTRY:

The 'Middle Name' data field should not be entered as 'NMN'. Enter the patient's correct middle name when known. If the patient doesn't have a middle name, leave the field blank.

## ETC CORNER

### Did You Miss the 2025 ArCRA Conference (October 6–8)?

The ArCRA Conference was an excellent opportunity to learn and connect with fellow Oncology Data Specialists (ODS) and cancer reporters from across the state. We heard informative and engaging presentations from a wide range of experts, covering topics such as the clinical presentation of cancer, treatment modalities, and best practices in cancer registry operations and abstracting.

As the Education and Training Coordinator (ETC) for the Arkansas Central Cancer Registry (ACCR), I was honored to present several sessions, including abstract training focused on **Breast** and **Melanoma** sites.

### Couldn't make it to the conference? We've got you covered!

The Breast & Melanoma webinars are available on the **FLccSC website** and offer **Category A CE credits**. These will remain accessible through the end of the year—so take advantage of them to meet your continuing education requirements.

After viewing an ACCR webinar, please complete the accompanying survey. Your feedback plays a vital role in helping us improve our education and training programs.

Let's keep learning and growing together!

### Here are some of the available ACCR webinars from 2024-2025: 6 Category A CEs available!

- Breast (December 2024)
- Common Coding Errors (February 2025)
- Treatment Coding Nuances (April 2025)
- Melanoma (June 2025)
- 2025 Manual Updates (August 2025)
- Colon (October 2025)
- Upcoming! Year in Review (December 2025)

### Here are some of the available NAACCR webinars from 2024-2025: 30 CEs available! Some include Category A designation!

- Hematopoietic 2024/2025 Part 1 (December 2024)
- Hematopoietic 2024/2025 Part 2 (January 2025)
- Usual Sites 2025 (February 2025)
- Boot Camp 2025 (March 2025)
- Treatment 2025 (April 2025)
- Prostate 2025 (May 2025)
- Uterus 2025 (June 2025)
- Leveraging Technology to Improve Efficiency in Hospital Based Cancer Registries (July 2025)
- Solid Tumor Rules 2025 (August 2025)
- Coding Pitfalls 2025 (September 2025)

### CEIP Credit Notice

Webinars viewed after the conference **do not qualify for CEIP credit**. Only those who **attended ArCRA in person** are eligible for CEIP hours.

Additionally, **CEIP credit is not available** for **ACCR** or **NAACCR** webinars.

Sincerely,  
Melissa Chapman, ODS-C, RHIT  
Education & Training Coordinator

## ACCR UPDATES

Web Plus has been updated, and we are now accepting v25 cases.

ACCR's v26 required data items list and the reportable casefinding lists have been posted to the utilities page!

ACCR is taking a break to focus on its annual data submissions. ACCR Virtual Office Hour will resume in 2026!

---

## DIRECTOR'S NOTES

The past few months have been very busy for us at ACCR as we prepare for our annual data submissions to the North American Association of Central Cancer Registries (NAACCR) and CDC's National Program of Cancer Registries (NPCR). As we move into December, we hope to transition our focus to data quality and completeness. This means we will be reaching out to facilities soon about timeliness reporting. Please remember that cancers are required to be reported to ACCR within six months of diagnosis and/or initial treatment. **ALL** facilities must report these cases. I have received some questions lately regarding reporting and will include information here for everyone.

Q: What does it mean that all facilities must report? Our facility was told by the pathology lab that we contract with that they send the pathology reports for cancer reporting. If we report to you too, isn't that double reporting or wasting time?

A: No, this is not double reporting. All facilities, including pathology labs, must send a reportable cancer case to us. Many of the lab reports that we receive have minimal information. We rely on abstracts submitted by diagnosing and treatment practitioners to capture all data items for a full picture of the cancer being reported. At the central registry, we are able to consolidate reports into one cancer case. By receiving information from all sources, the cancer is less likely to have edit errors that result in the registry following back to facilities requesting that they either provide additional information or reabstract and submit the case again.

Q: Can our facility send our EHR to you to report the cancer?

A: No, ACCR only accepts cancer case submissions via Web Plus. Cases must be abstracted directly from medical records. EHR and EMR are not compatible with cancer reporting systems and do not pass record edit checks.

These were just a couple of the questions that I have received recently. If you would like further clarification or have additional questions, please email me at [Lindsay.Collins@arkansas.gov](mailto:Lindsay.Collins@arkansas.gov).

As we get close to the holidays, I encourage you all to say a kind word to someone. Keeping with this year's ArCRA conference theme, we are *'Better Together'*! If you are wanting to connect with people in your community to celebrate Thanksgiving, I suggest searching 'Friendsgiving' or Thanksgiving events in your area. I have enjoyed hosting Friendsgiving at my home for ten years!

I hope you all have a wonderful Thanksgiving holiday! THANK YOU!

Kind regards,

Lindsay M. Collins, MPA, ODS-C



## QUESTIONS?

Check out our Frequently Asked Questions on the ADH website!

[https://healthy.arkansas.gov/wp-content/uploads/FAQs\\_about\\_ACCR.pdf](https://healthy.arkansas.gov/wp-content/uploads/FAQs_about_ACCR.pdf)

Need previous issues of ACCR's newsletters or presentations? You can find them on the ADH ACCR website!

[healthyar.info/accr](http://healthyar.info/accr)

Need assistance getting set up with cancer case reporting or are you experiencing issues with WebPlus?

Email [ADH.ACCR@arkansas.gov](mailto:ADH.ACCR@arkansas.gov)

Need to review previous Casefinding/ACCR Required Data Items lists or ICD-10 Reportable lists? You can find them on the ACCR Utilities page for Arkansas Cancer Reporters.

<https://adhcancer.arkansas.gov/>

Has your facility changed locations, do you have a new facility manager, CEO, or Oncology Data Specialist or abstractor who is reporting cases? Send us your updates!

Email [Tabatha.Wilkerson@arkansas.gov](mailto:Tabatha.Wilkerson@arkansas.gov)

For all other questions or for more information on the Arkansas Central Cancer Registry, email us at

[ADH.ACCR@arkansas.gov](mailto:ADH.ACCR@arkansas.gov). We look forward to hearing from you!



**Vital Records & Statistics Branch / Arkansas Central Cancer Registry**

**Arkansas Department of Health**

**4815 W. Markham, Slot 7**

**Little Rock, AR 72205**

**healthy.arkansas.gov / 1-800-462-0599**