

ARKANSAS CENTRAL CANCER REGISTRY

November 2024 Monthly Newsletter



In November, an opportunity exists for men of all ages to take part in “No Shave November”, as a fun way to show awareness and support for prostate cancer survivors in addition to raising money to support the mission of the Arkansas Prostate Cancer Foundation (APCF). Participation can be as an individual or in a group!

[Click here to sign up! \(https://arprostatecancer.networkforgood.com/onboarding/create_fundraiser/welcome?parent_id=196210\)](https://arprostatecancer.networkforgood.com/onboarding/create_fundraiser/welcome?parent_id=196210)

During the month of November, we also recognize and encourage awareness of Carcinoid Cancer, Gastric Cancer, Lung Cancer, and Pancreatic Cancer.

ACCR EDUCATIONAL WEBINAR SERIES

Topic: Breast Cancer Coding Review
Presenter: Janet Raleigh, ODS-C

Date/Time: December 17th, 2024 @ 12 pm CST
Registration via: [FLccSC](#)

Thank you for your continued viewing of the ACCR Webinar Series, 2024 presentations within FLccSC! To round out the year, we are looking forward to our final presentation of 2024 on December 17th focusing on breast primaries. Please contact the Educational Training Coordinator, Melissa Chapman, or Educational Content Manager, Janet Raleigh, with any questions Melissa.Chapman@Arkansas.gov or Janet.Raleigh@Arkansas.gov

ACCR UPDATES

The ACCR Required Data Items list and the ICD-10 Reportable list have been updated and posted to the ACCR utilities website. The ACCR Required Data Items list is effective for 2025 diagnoses beginning January 1, 2025. The ICD-10 Reportable List will be effective 10/01/2024 through 09/30/2025.

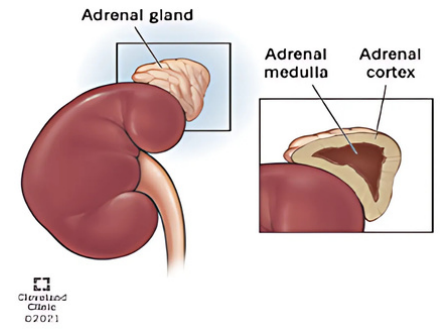
ACCR is launching a new virtual Office Hour for facilities to call in and ask questions or get help with coding or reporting issues. Join us on November 12, 2024, from 11:00 am to 12:00 pm CST via Microsoft Teams.

Meeting ID: 288 311 112 554
Passcode: zH38zj

MONTHLY ABTRACTOR TIPS

1. ADRENAL GLAND

- **GRADE:** TP53 or CTNNB mutations when present are used to assign grade: **Code M**
 - Code M takes priority over A-D which represents Well, Moderately, Poorly and Undifferentiated, Anaplastic Differentiation
- **AJCC:** Neuroblastic tumors (primarily of pediatric population), do not have an AJCC staging system
- **AKA:** Suprarenal glands, located on top of each kidney
- No applicable **SSDI's**



2. MELANOMA

- For a diagnosis of metastatic melanoma of an unknown primary site:
 - Assign topography **code C449**
- For a diagnosis of 'Melanoma arising in a compound nevus, NOS or nevus, NOS, diagnosis years 2007+':
 - Assign histology **code 8720 - Melanoma, NOS**
- For an in situ melanoma, Breslow Thickness SSDI:
 - Assign **code XX.9**



ABSTRACTOR UPDATES

There have been several updates to manuals for 2025. Make sure to update your manuals and review the summary of changes in each manual.

- **STORE 2025 - [STORE 2025](#)**
 - Released 06/15/24
 - Effective for Cases diagnosed 01/01/25
 - **2 new SSDI's will be required for CoC programs in 2025:**
(See SSDI Manual for coding rules and details)
 - Post Transplant Lymphoproliferative Disorder-PTLD, NAACCR item # 1172
 - Lymphoma (00790 Schema)
 - Lymphoma-CLL/SLL (00795 Schema)
 - Plasma Cell Disorders (00822 Schema)
 - Plasma Cell Myeloma (00821 Schema)
 - Primary Cutaneous Lymphoma (00812 Schema)
 - PD-L1, NAACCR item # 1174
 - Lung V9 (09360 Schema)
 - Several changes have been made, these can be viewed on pages 29-35
- **ICD-O-3**
 - No Changes
 - Includes no code changes for AJCC ID

- **SITE/HISTOLOGY VALIDATION LIST**

- Applicable standards are in the 2025 Cancer PathChart Site Morphology Validation List
 - [Cancer PathCHART ICD-O-3 Site Morphology Validation List](#)

- **SOLID TUMOR RULES**

- Content will be made consistent with Cancer PathCHART tumor site and morphology standards annually
- Composition of most changes includes addition of new terminology, clarification to equal/equivalent terms and clarifications for terms that are not equal/equivalent

- **AJCC VERSION 9 PROTOCOLS**

- **4 new protocols**, effective for January 1, 2025
 - Thymus
 - Lung
 - Diffuse Pleural Mesothelioma
 - Nasopharynx
- These Version 9 protocols will replace the current AJCC 8th edition chapters for these disease sites

- **EXTENT OF DISEASE (EOD)**

- **4 new schemas to align with AJCC V9**, effective for January 1, 2025
 - Thymus
 - Lung
 - Soft Tissue Abdomen and Thoracic, histology 8982 with C34_ moves to Lung V9
 - Diffuse Pleural Mesothelioma
 - Soft Tissue Abdomen and Thoracis, histology 8980 with C379 moves to Thymus V9
 - Nasopharynx
- EOD Regional Nodes: Several schemas updated to add codes for Clinical Assessment only
- Neoadjuvant Therapy, Neoadjuvant Therapy-Clinical Response, and Neoadjuvant Therapy-Treatment Effect added to all EOD schemas

****Additional updates should be reviewed by clicking here:** [2025 Implementation Guidelines](#)

- **REPORTABILITY**

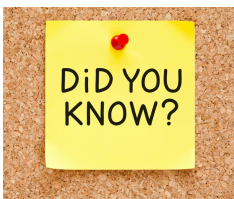
- Change in behavior code - As of January 1, 2025, Post Transplant Lymphoproliferative Disorder (PTLD) 9971/**1** is reportable as 9971/**3**. Please refer to the [Hematopoietic Manual](#)

- **SEER PROGRAM CODING AND STAGING MANUAL 2025 - [SPCSM 2025](#)**

- Effective for diagnosis January 1, 2025 and forward
- Released 09/2024

- **SUMMARY STAGE 2018**

- Notes have been restructured to add titles, to assist and improve user readability and more efficient note location finding.



Through the World Pancreatic Cancer Coalition, in association with Pancreatic Cancer Awareness month in November, World Pancreatic Cancer Day will be recognized on **November 21, 2024**. This initiative is an effort to unite the global community by bringing attention to pancreatic cancer by highlighting the need for greater awareness, funding and continued research.

Pancreatic Cancer Early Detection Tips



- Consider getting a genome screening for potential syndromes that put you at risk
- Screen for pancreatic cancer if you have a strong family history or genetic syndrome (MRIs and endoscopic ultrasounds)
- Pancreatic cancer is the 10th most common cancer but the 3rd most deadly

verywell health

ETC CORNER

The holiday season is one of my favorite times of the year. As Thanksgiving comes around, each year we are reminded to think of what we are thankful for. We are encouraged to say “family”, “friends”, “our health”, and those are all wonderful things to be grateful for, but what I am also thankful for is the opportunity to provide the ODSs of Arkansas with, as well as surrounding states, exemplary education. Arkansas has a wonderful group of Oncology Data Specialists who are dedicated to providing quality data to the ACCR to further cancer research efforts in Arkansas and across the nation. The education ACCR prepares and distributes through FLccSC provides not only much needed CE’s for continuing education requirements, but contributes to the growth of each and every ODS or student in the state. We are truly appreciative of each and every one of you. If you have recommendations for education, please feel free to reach out to us directly. We look forward to hearing from you!

Sincerely,
Melissa Chapman RHIT, ODS-C

RULES FOR ARKANSAS CANCER CASE REPORTING

In accordance with Arkansas cancer reporting law, all licensed health care facilities and providers are required to report cancer cases to the ACCR no later than six months after the date of diagnosis of cancer and/or initial treatment of cancer.

All cancer cases that were diagnosed or began initial treatment on or before **May 31, 2024**, should have been reported to ACCR. If you still have cases remaining from this period, report them immediately. Cases should be reported via WebPlus.

Month	Abstract due to ACCR	Recommended Month Facility conducts Patient Follow-up	Follow-Up and Case Update sent to ACCR
April 2024	October 2024	April 2025	May 1
May 2024	November 2024	May 2025	June 1
June 2024	December 2024	June 2025	July 1

Questions?

Check out our updated Frequently Asked Questions on the ADH website!

https://healthy.arkansas.gov/wp-content/uploads/FAQs_about_ACCR.pdf

Need previous issues of ACCR's newsletters or presentations? You can find them on the ADH ACCR website!

<https://healthy.arkansas.gov/programs-services/data-statistics-registries/arkansas-cancer-registry/>

Need assistance getting set up with cancer case reporting or are you experiencing issues with WebPlus? Contact Clint Lemons at 501-661-2141 or clint.lemons@arkansas.gov.

Need to review previous Casefinding/ACCR Required Data Items lists or ICD-10 Reportable lists? You can find them on the ACCR Utilities page for Arkansas Cancer Reporters.

<https://adhcancer.arkansas.gov/>

For all other questions or for more information on the Arkansas Central Cancer Registry, email us at ADH.ACCR@arkansas.gov. We look forward to hearing from you!



Vital Records & Statistics Branch / Arkansas Central Cancer Registry

**Arkansas Department of Health
4815 W. Markham, Slot 7
Little Rock, AR 72205
healthy.arkansas.gov / 1-800-462-0599**