

ARKANSAS CENTRAL CANCER REGISTRY

April 2025 Monthly Newsletter



HELLO
SPRING

April is National Cancer Control Month. This month focuses on raising awareness about cancer prevention, early detection, and treatment options. A special emphasis is put on promoting and leading healthy lifestyle choices.

During the month of April, we also recognize awareness of Head and Neck Cancer, Testicular Cancer, and Minority Cancer Awareness

DID YOU KNOW?

Spotlight: Pancreatic cancer

As winter begins to fade and temperatures steadily increase, we see the beauty of new life blossoming all around us. Spending time outdoors can be invigorating and bring a sense of both renewal and reenergizing. Spring ushers in not only a season of renewal but also a time to rally together in support of important causes. Events like the Pancreatic Cancer Action Network's 'PURPLESTRIDE' provides meaningful opportunities to raise awareness, promote support, and honor those affected by cancer, all while enjoying the outdoors. This event can be attended at nearly 60 locations nationwide. Here in Arkansas, you can participate in Rogers! To register your team and find out more, click here [PURPLESTRIDE](#).

- Pancreatic tumors are either exocrine or neuroendocrine
- 90% are exocrine



Make Strides to End Pancreatic Cancer with Us at
PanCAN
PURPLESTRIDE
REGISTER NOW FOR OUR BIGGEST FUNDRAISING EVENT OF 2025!
Saturday, April 26, 2025

ACCR EDUCATIONAL WEBINAR SERIES

Topic: Treatment Coding Nuances
Presenter: Janet Raleigh, ODS-C

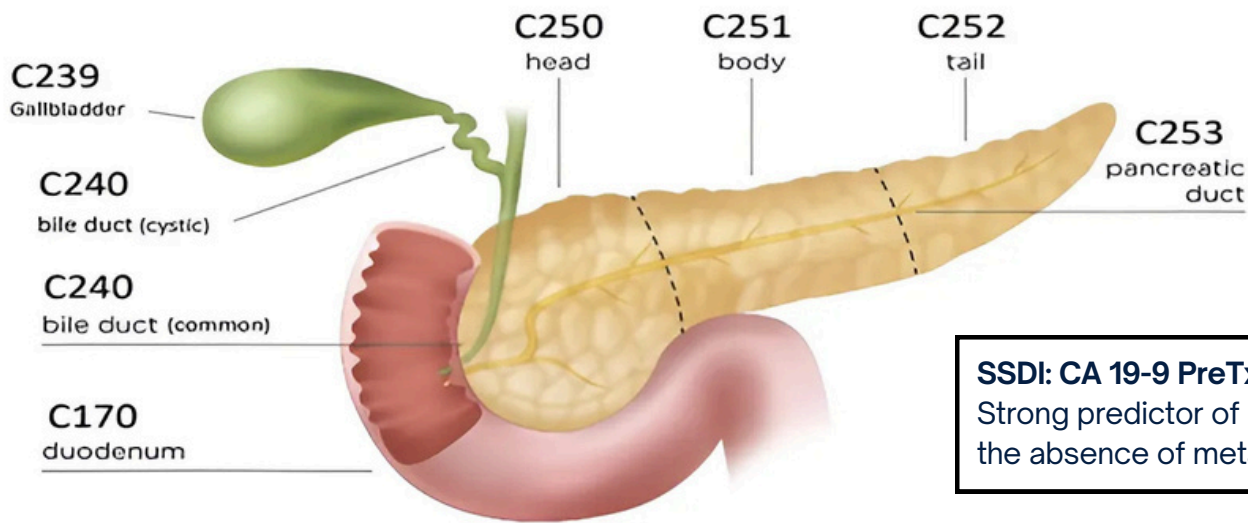
Date/Time: April 15, 2025 @ 12 pm CST
Contact Melissa.Chapman@arkansas.gov for webinar access.



MONTHLY ABSTRACTOR TIPS

Focus Area: Pancreas

- The most common histology is Adenocarcinoma
- For Islet cell tumors, code to the subsite of the pancreas that is involved
 - Apply the general code C254 Islet of Langerhans, when the subsite cannot be determined



Neoadjuvant Therapy Treatment

- Neoadjuvant therapy is systemic and/or radiation therapy that is given prior to surgery to aid in resectability, by shrinking the tumor
- For Pancreas and other sites, the SEER Program Coding and Staging Manual, Appendix C: Site Specific Coding Modules contains guidance on “Site-Specific Codes for Neoadjuvant Therapy and Treatment Effect”
- Record findings from post neoadjuvant therapy **surgical pathology report ONLY**



- AJCC Post Therapy Path (yp) Pathological Response, **is not the same** and is based on managing physician’s evaluation from the surgical pathology report and clinical evaluation after neoadjuvant therapy

EOD Staging

- **Primary Tumor:** Look for terms such as ‘abutment’, ‘abut(s)’, ‘encases’, or ‘encasement’ when related to the major blood vessels
 - When used, these terms can be interpreted as involvement of these structures

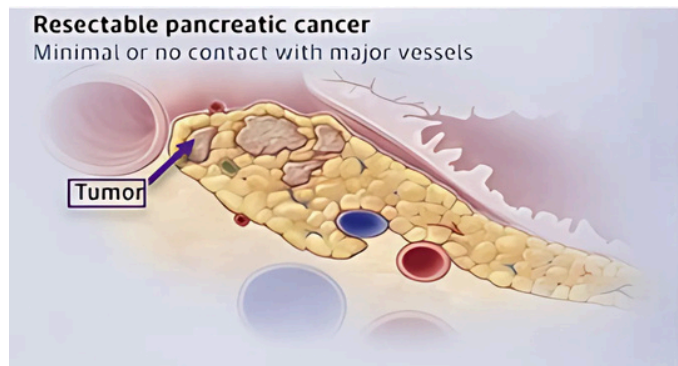


Fig. 1, the tumor is not involving the venous or arterial vessels.

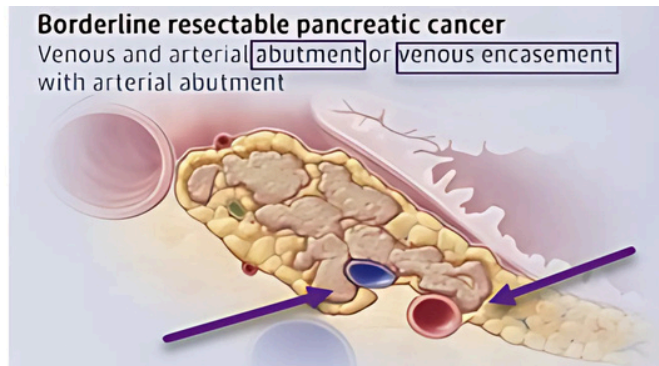


Fig. 2, illustrates abutment and encasement.

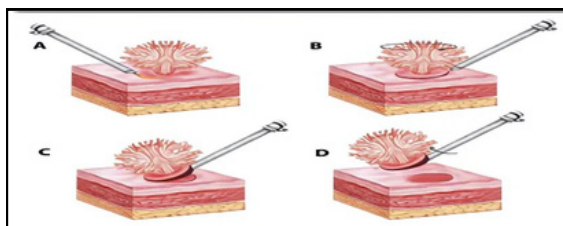
- **Regional Nodes:** Apply codes based on CLINICAL or PATHOLOGICAL assessment only
 - *Clinical assessment* includes information on nodal involvement based on physical exams or imaging
 - *Pathologic assessment* includes microscopic exam of regional nodes, including: FNA, core biopsy, sentinel node biopsy or lymph node excision and/or lymph node dissection

Focus Area: Cancer Directed Therapy

- Cancer directed therapy consists of various methods of cancer cell eradication, including systemic and radiotherapy, and a variety of surgical methods
- When surgical removal is possible, the surgical method is dependent on tumor location and involvement
 - The ultimate goal is to completely remove the tumor or remove as much tumor as possible without jeopardizing the patient’s safety
 - When the entire tumor cannot safely be removed, residual disease is treated with additional cancer directed therapy modalities
- When making coding decisions, it is important to review the intent of the surgical procedure to determine if surgery is curative or for diagnostic purposes
 - This determination will drive the assignment of AJCC staging depending on intent; always review the applicable AJCC Chapter to determine criteria for Clinical and Pathological Staging

Example

En bloc resection: Removal of primary tumor with regional extension to adjacent organs and lymph nodes



Removed ‘As a whole’

Hormonal manipulation: Oophorectomy



Coded as: Hematologic Transplant and Endocrine Procedures, not Surgery

ETC CORNER

Spring Cleaning: Out with the old, and in with the new. Tips to keep your desktop neat and tidy.

The term “Desktop” has changed over the last 20 years. Once referencing “the surface of your desk” (papers, sticky notes, equipment, pens, etc.), “desktop” now includes the computer’s main screen. It is the first screen you see after logging into your computer. Your desktop's appearance can vary widely because it is highly customizable, but generally desktops will feature images, icons, and a taskbar. A computer desktop can also get very cluttered, just like your physical desktop. There are many ways to clean your desktop (computer or otherwise) and create an organized work environment. We often throw out items we’ve kept for years and years, especially printed manuals, but what about electronic manuals?

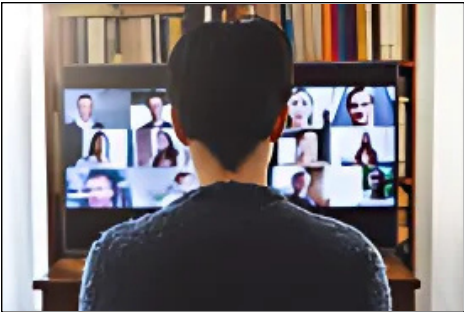
For 2025, we have some new updates to Cancer Registry reporting manuals. One of the major changes to the manuals was the newest edition of the Solid Tumor Rules. With these changes, you will find that standalone chapters are no longer an option, and all chapters must be accessed as one complete document. For other important revisions and updates, follow [this link](#) to SEER’s STR Revisions page. So, what about keeping previous versions of the Solid Tumor Rules? It is advised to create an “Archive” folder and store previous versions here, for historical purposes and review only. The newest and most up-to-date manual will always be for immediate use once it is released. In this case the 2025 Update has the appropriate content to abstract all cases diagnosed 2018 and forward. When going through your outdated manuals, be cautious as to not “throw out” your MP/H Rules (2007), as these rules will come in handy for pre-2018 cases, as well as “Other Site” rules, prior to 2023. There were also updates to the Grade Manual, SSDI Manual, as well as a new 2025 STORE Manual released. With the STORE Manual, you do not use the current version for all cases—we must use the manual that corresponds to the “abstract” year of diagnosis. One important reason for this is because each reportable diagnosis year (after 2020 has its own rules for reporting). For example, you do not use the 2025 STORE Manual for cases diagnosed in 2021, as there will be differences in the reporting requirement, resulting in errors in cancer data reporting. It is recommended that you keep each STORE Manual downloaded or bookmarked for ease of access.

A fresh clean desktop will be beneficial for everyone this spring, and Arkansas Central Cancer Registry (ACCR) is throwing their hat in to help! In November 2024, ACCR presented “Abstracting 411: How to organize your PC for optimal abstracting”. We’re excited to share that this presentation is now available to view “on demand” with enrollment through the FLccSC website and offers 1 CEU! There are some great tips for organization and utilizing the tools and resources available to keep your desktop in tip-top shape. Additionally, an updated slide has been added to the supporting documentation section titled, “2025 Updated Manual Links” within this course. Please feel free to reach out if you have any tips or suggestions for “spring cleaning” that you would like to share with other Cancer Registrars, and I will add them to this course.

Sincerely,
Melissa Chapman, ODS-C, RHIT
Education & Training Coordinator
Arkansas Central Cancer Registry

ACCR VIRTUAL OFFICE HOUR

Need to speak directly to someone at ACCR about a coding, IT, or education related question? Do you have a case that you want ACCR to review with you? ACCR offers the unique opportunity to reach all its staff at once, during its monthly virtual office hour! Please dial in with your questions and ACCR will be happy to assist you.



April 2025

Date: April 17, 2025
Time: 10:00 AM – 11:00 AM CST
Platform: Microsoft Teams

Dial in by phone: +1 501-244-3310
Conference ID: 208 180 976#

Meeting ID: 231 050 380 873
Passcode: zB324m3y

ACCR will not have a virtual office hour in May 2025. Stay tuned for future dates!

ACCR UPDATES

ACCR has been published in the [Winter 2024 Journal of Registry Management!](#) Disparities in Colorectal Cancer Incidence and Mortality Rates in Arkansas and Associated Risk Factors is located on page 158 of the winter issue. The current and previous JRM publications can be found at <https://www.ncra-usa.org/About/Publications/Journal-of-Registry-Management>.

The 2024 Arkansas Cancer Facts & Figures cancer surveillance report is published online! The report includes incidence data up to 2019. This was the last complete cancer diagnosis year prior to the COVID-19 pandemic, and the latest year that the ACCR was gold certified by the North American Association of Central Cancer Registries (NAACCR). A follow-up report will be provided in the next year to compare with pandemic-impacted cancer diagnosis years 2020 and 2021.

Check it out at healthyar.info/accr under Publications!

RULES FOR ARKANSAS CANCER CASE REPORTING

In accordance with Arkansas cancer reporting law, all licensed health care facilities and providers are required to report cancer cases to the ACCR no later than six months after the date of diagnosis of cancer and/or initial treatment of cancer.

All cancer cases that were diagnosed or began initial treatment on or before **October 31, 2024**, should have been reported to ACCR. If you still have cases remaining from this period, report them immediately. Cases must be reported via WebPlus.

Month	Abstract due to ACCR	Recommended Month Facility conducts Patient Follow-up	Follow-Up and Case Update sent to ACCR
September 2024	March 2025	September 2025	October 1
October 2024	April 2025	October 2025	November 1
November 2024	May 2025	November 2025	December 1

DIRECTOR'S NOTES

Facility surveys were due last month, and ACCR is currently reviewing survey submissions. Facility surveys are used to update our database and make sure we have the correct abstractor information when follow-up is needed on a cancer case. ACCR's Education & Training Coordinator, Melissa Chapman, has been setting up individual Web Plus trainings with facilities, upon request. If your facility does not have a certified Oncology Data Specialist (ODS), then I highly recommend that you reach out to Melissa to schedule a training session.

Lately, I have received feedback from facilities that they don't know where to begin to look for help! We understand the difficulty that your facility may have in abstracting and submitting cases without a certified ODS and have compiled a list of resources that may assist in your search for an ODS. Additionally, there are several education opportunities for uncertified oncology data abstractors to obtain training to earn the ODS certification.

Facility Resources:

Arkansas Cancer Registrars Association (ArCRA) – ArCRA is a not-for-profit professional organization representing members with careers or skills related to cancer surveillance, cancer registry, or cancer control activities. You can contact ArCRA for ODS contractor information.

Email: arcra.secretary@gmail.com and arcra.president@gmail.com

North American Association of Central Cancer Registries (NAACCR) – NAACCR has a listserv that goes out to its members which also includes contractors and ODS'. Members can also post opportunities on the NAACCR website.

Listserv: <https://www.naacr.org/listserv/> and <https://www.naacr.org/job-opportunities/>

National Cancer Registrars Association (NCRA) – NCRA's Job Bank has a repository of members who have provided resumes and are seeking employment opportunities.

Learn more at <https://www.ncra-usa.org/Advocacy/Workforce>.

Education – NCRA has a section dedicated to [accredited and approved education programs](#). You also have the opportunity to earn certification without enrolling in a formal education program. Check out the ODS Exam Eligibility Chart and learn more at <https://www.ncra-usa.org/About/Paths-to-the-Profession>.

I hope this information helps you in your recruitment efforts!

Sincerely,
Lindsay M. Collins, MPA, ODS-C
Registry Director
lindsay.collins@arkansas.gov

UPCOMING CONFERENCES

Check out March's newsletter for more details on the following conferences!

May 2025

- [National Cancer Registrars Association's Annual Education Conference](#)
May 3-6, 2025, Renaissance Orlando at SeaWorld®
- [ImmunizeAR 2025 HPV Summit: Advancing HPV Cancer Prevention](#)
May 25, 2025, Wyndham Riverfront Hotel, North Little Rock, AR 72114

June 2025

- [North American Association of Central Cancer Registries 2025 Annual Conference](#)
June 3-5, 2025, Connecticut Convention Center, Hartford, CT 06103

August 2025

- [ImmunizeAR's Immunization Summit 2025](#)
August 8, 2025, Wyndham Riverfront Hotel, North Little Rock, AR 72114

Questions?

Check out our updated Frequently Asked Questions on the ADH website!

https://healthy.arkansas.gov/wp-content/uploads/FAQs_about_ACCR.pdf

Need previous issues of ACCR's newsletters or presentations? You can find them on the ADH ACCR website!

healthyar.info/accr

Need assistance getting set up with cancer case reporting or are you experiencing issues with WebPlus? Contact Clint Lemons at 501-661-2141 or clint.lemons@arkansas.gov.

Need to review previous Casefinding/ACCR Required Data Items lists or ICD-10 Reportable lists? You can find them on the ACCR Utilities page for Arkansas Cancer Reporters.

<https://adhcancer.arkansas.gov/>

For all other questions or for more information on the Arkansas Central Cancer Registry, email us at ADH.ACCR@arkansas.gov. We look forward to hearing from you!



Vital Records & Statistics Branch / Arkansas Central Cancer Registry

Arkansas Department of Health
4815 W. Markham, Slot 7
Little Rock, AR 72205
healthy.arkansas.gov / 1-800-462-0599

