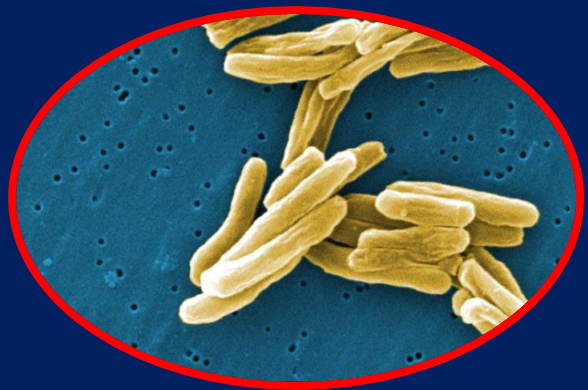


# TUBERCULOSIS ANNUAL STATISTICAL REPORT 2023

TUBERCULOSIS  
PREVENTION PROGRAM



# Tuberculosis Program Central Office Personnel

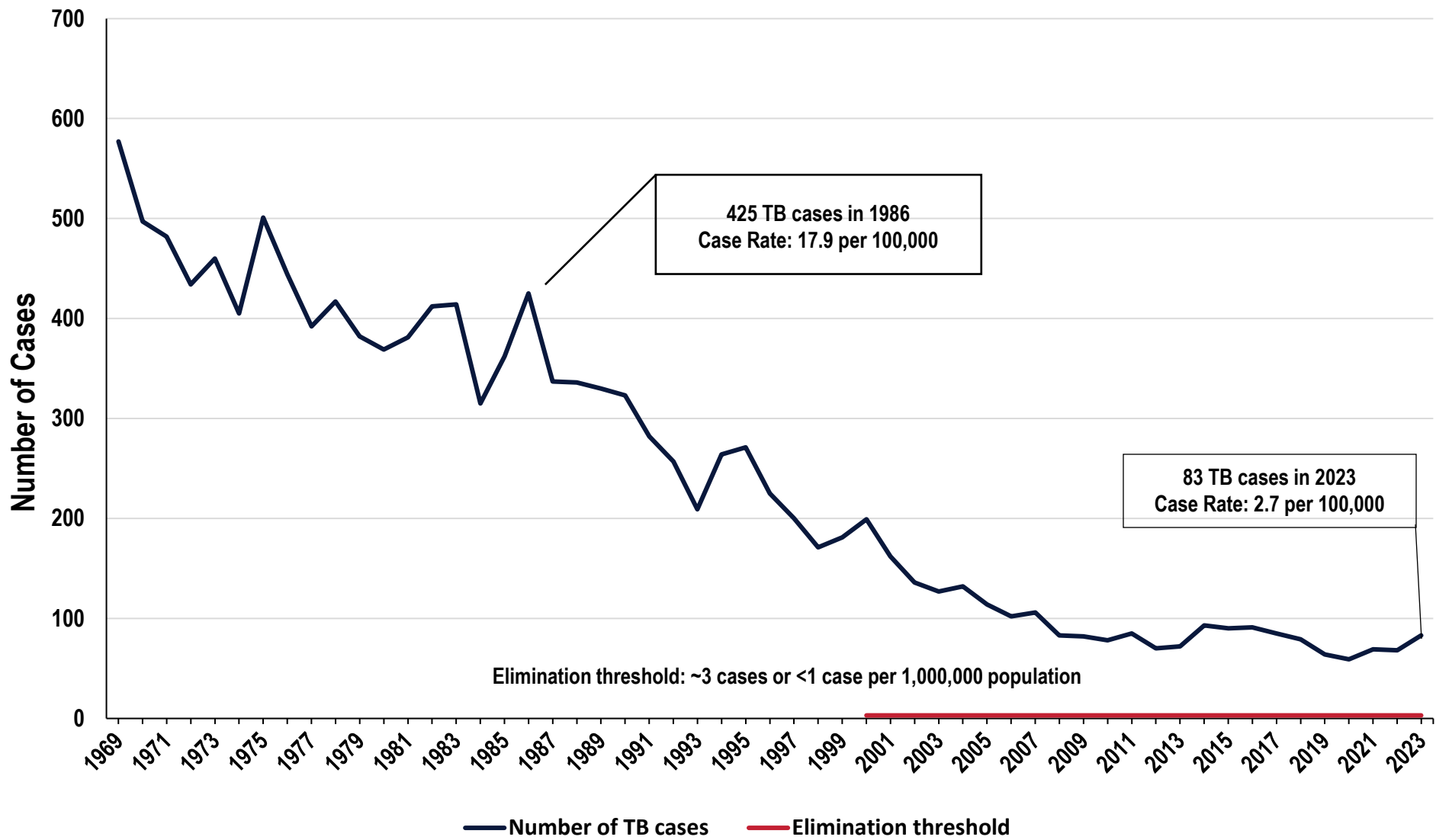
- ❖ Dr. Naveen Patil, State TB Control Officer
- ❖ Dr. Sandra Chai, Deputy State TB Control Officer
- ❖ Susan Roys, TB Grants/Program Manager
- ❖ Melinda Curtis, RN, Nurse Consultant
- ❖ Teresa Plummer, BSN RN, Nurse Consultant
- ❖ Michelle Herndon, Administrative Analyst
- ❖ Savannah Harrelson, Public Health Advisor, CDC
- ❖ Chris Ray, Public Health Associate, CDC
- ❖ Ralph Inge, Public Health Associate, CDC
- ❖ Dr. Leonard Mukasa, Chief Epidemiology Officer

Contact: Leonard Mukasa, [Leonard.Mukasa@arkansas.gov](mailto:Leonard.Mukasa@arkansas.gov)  
Phone: 501-280-4106



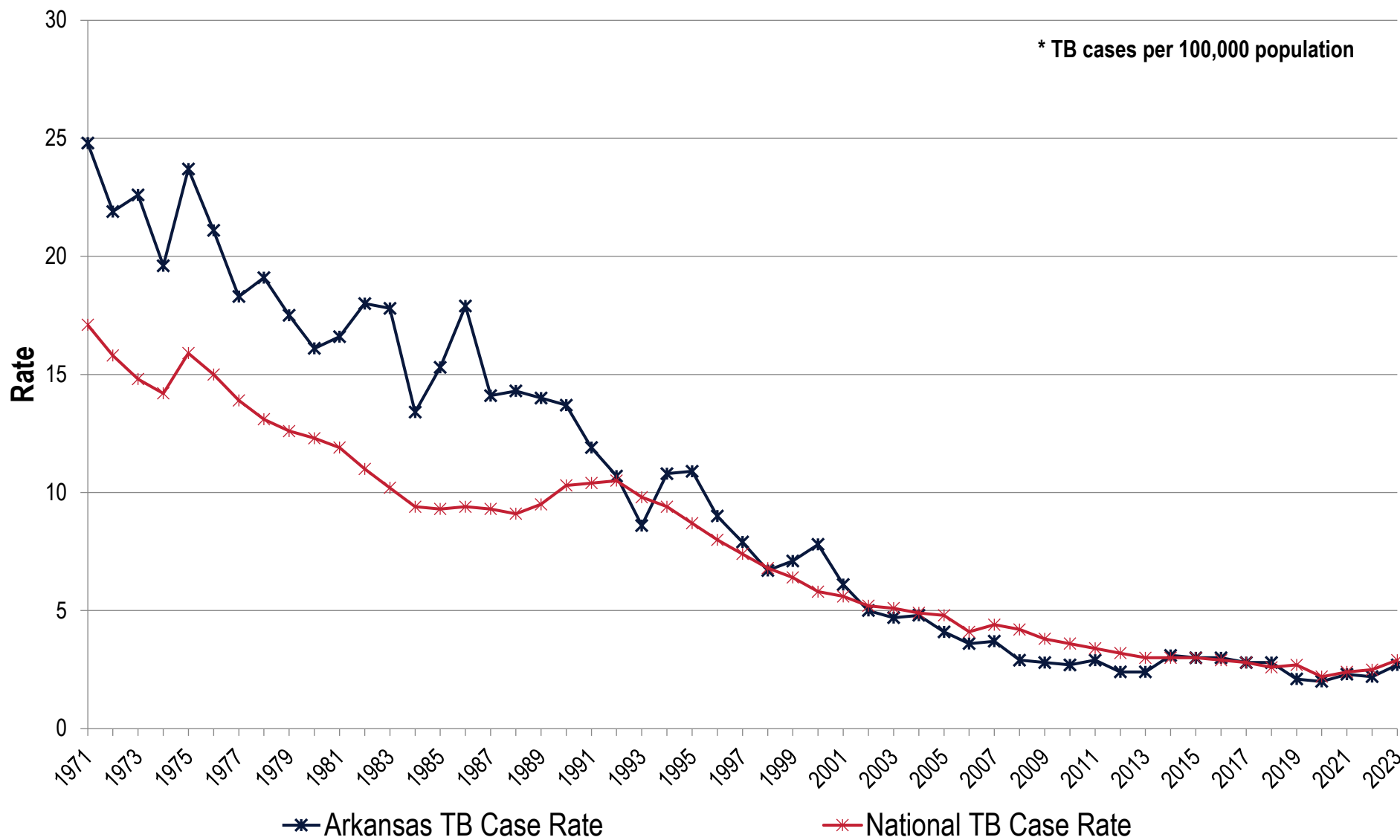


# Figure 1: Progress Towards Tuberculosis (TB) Elimination, Arkansas, 1969-2023



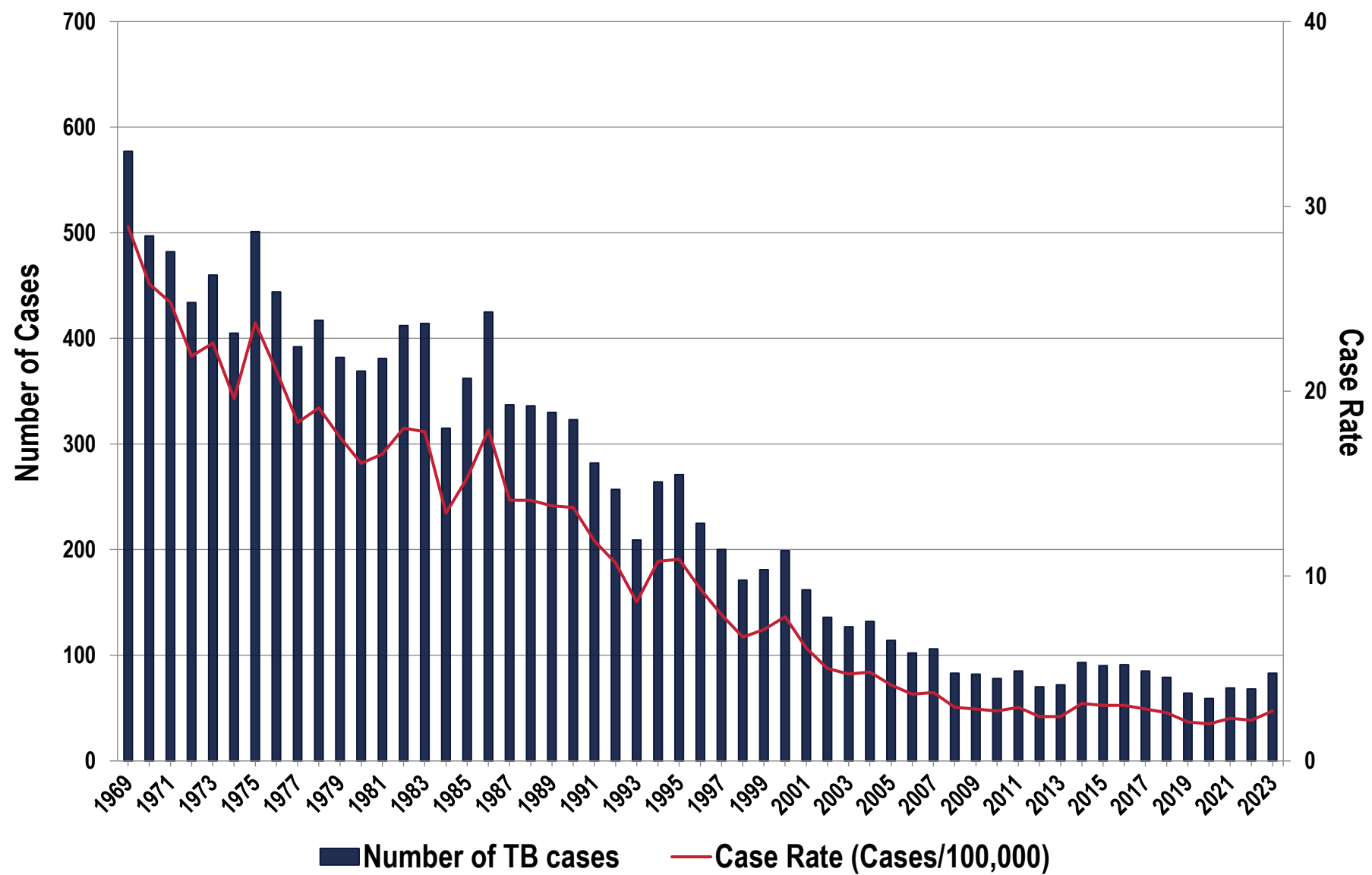


# Figure 2: Arkansas and United States TB Case Rates, 1971-2023



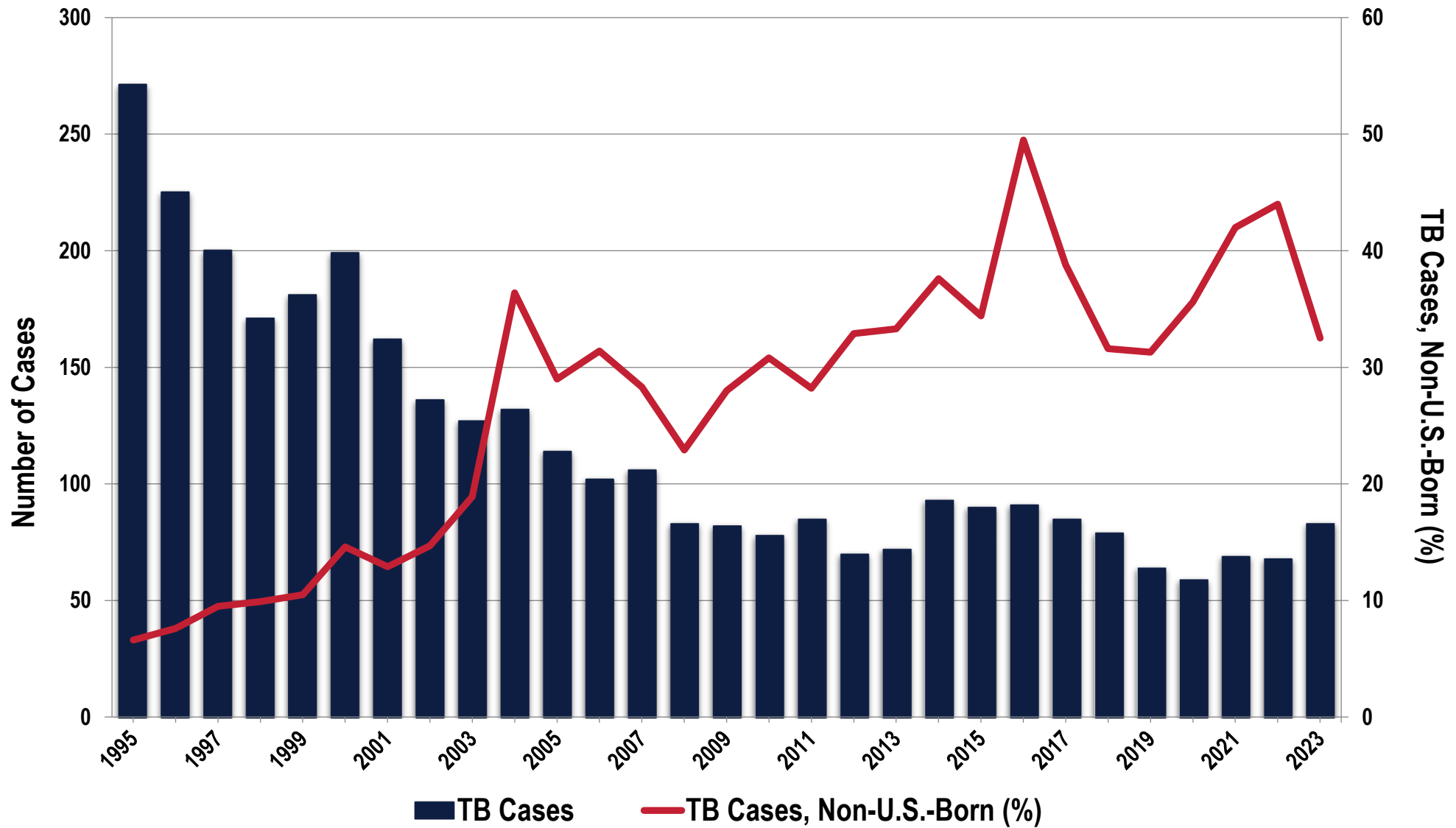


# Figure 3: TB Cases and Case Rates, Arkansas, 1969-2023



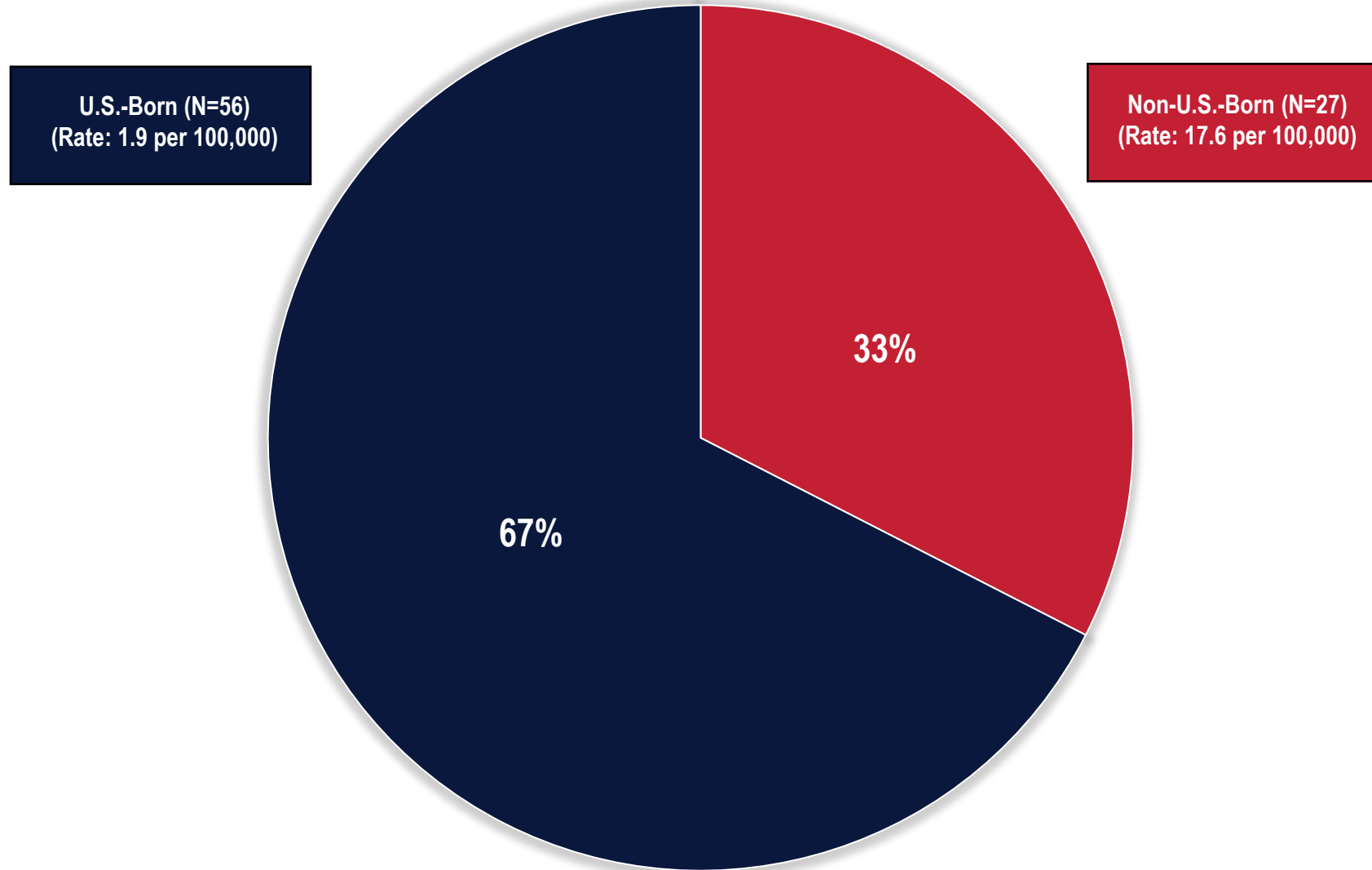


# Figure 4: Trends in TB Cases, Arkansas, 1995-2023



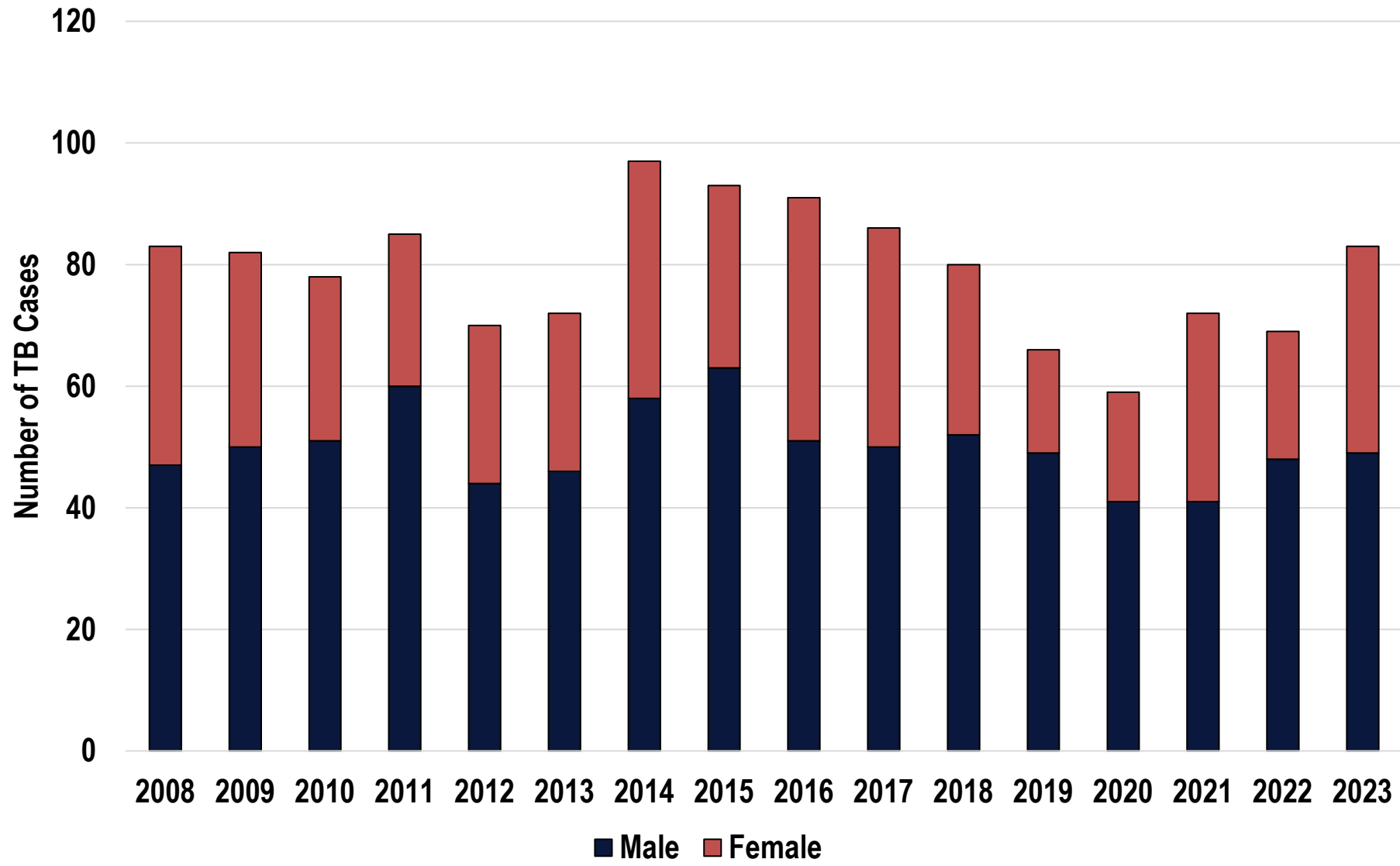


**Figure 5: TB Cases by Origin of Birth, Arkansas, 2023  
(N=83)**





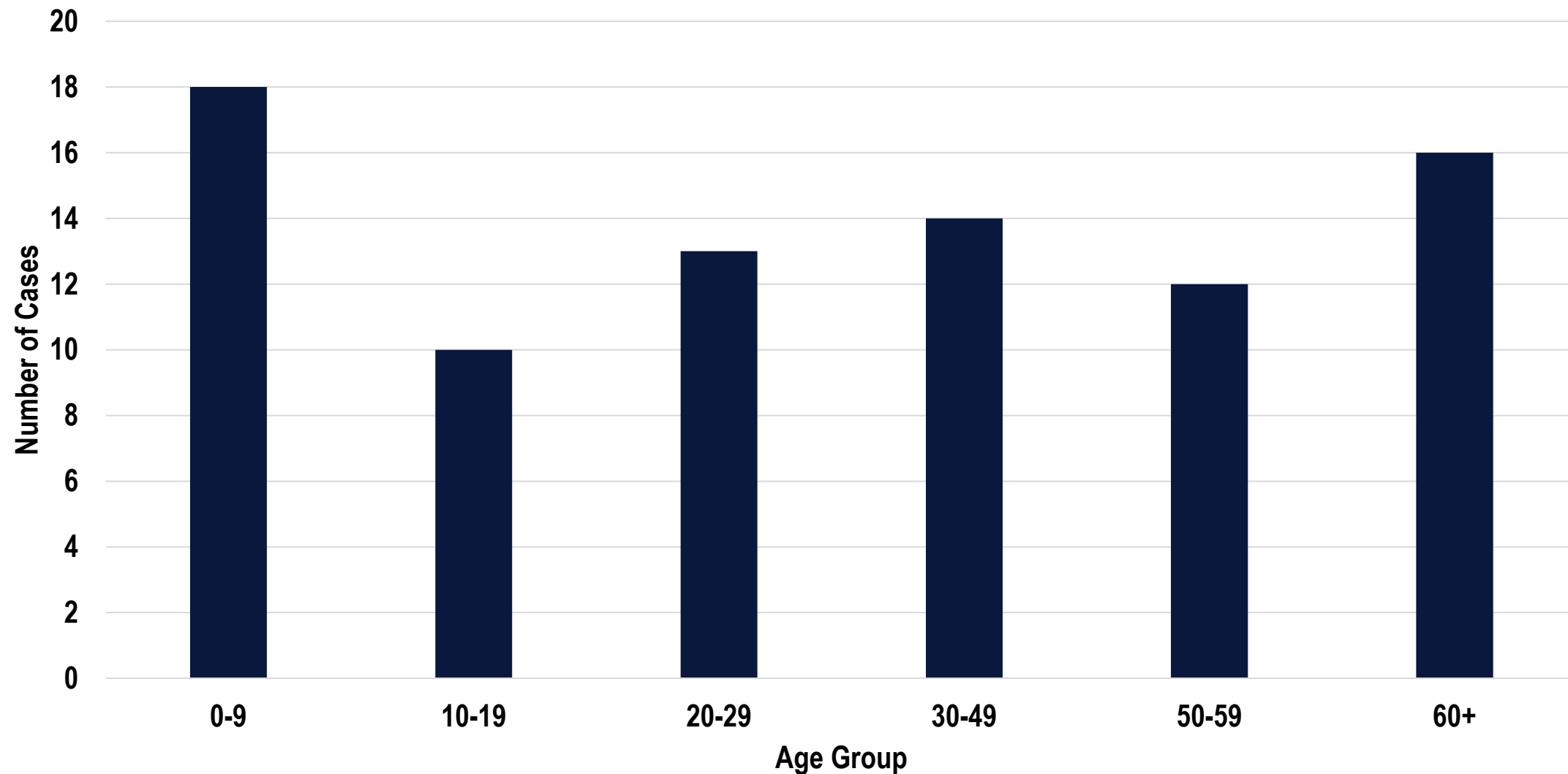
# Figure 6: TB Cases, by Sex, Arkansas, 2008-2023







# Figure 7: Age Distribution of TB Cases, Arkansas, 2023



# Table 1: TB Cases by Public Health Region and Diagnosis Type, Arkansas, 2021 - 2023



2021 Cases				2022 Cases				2023 Cases			
Region	Total	Culture	Clinical	Region	Total	Culture	Clinical	Region	Total	Culture	Clinical
NW	29	21	8	NW	32	21	11	NW	21	15	6
NE	9	7	2	NE	9	8	1	NE	17	7	10
Central	11	9	2	Central	12	10	2	Central	14	13	1
SE	10	7	3	SE	3	3	0	SE	18	10	8
SW	10	10	0	SW	12	11	1	SW	13	9	4
<b>Total</b>	<b>69</b>	<b>54</b> <b>(78.3%)</b>	<b>15</b> <b>(21.7%)</b>	<b>Total</b>	<b>68</b>	<b>53</b> <b>(77.9%)</b>	<b>15</b> <b>(22.1%)</b>	<b>Total</b>	<b>83</b>	<b>54</b> <b>(65.1%)</b>	<b>29</b> <b>(34.9%)</b>

\*Verification by provider diagnosis counted as clinical above  
 \*Verification by positive culture result counted as culture above



**Table 2: TB Case Rates\*, by Public Health Region, Arkansas, 2012-2023**

Region	2012	2013	2014	2015	2016	2017	2018	2019	2020	2021	2022	2023
Northwest	3.6	1.6	4.8	3.2	3.7	3.4	3.3	2.2	2.3	2.7	2.9	2.0
Northeast	2.5	1.3	1.6	2.5	1.8	1.4	1.1	0.9	2	1.6	1.5	3.1
Central	1.7	2.1	1.7	2.7	2.9	2	2.9	2.1	1.3	1.3	1.4	1.6
Southeast	2.7	2.9	4.2	1.9	4	2.5	2.6	2.1	1.7	4.3	1.3	7.6
Southwest	2.7	2.2	4.3	5.3	3.1	5	2.5	4.1	2.5	3.3	4.0	4.2
State	2.4	2.4	3.1	3	3	2.8	2.6	2.1	2	2.3	2.2	2.7

\* Cases /100,000 population