



ARKANSAS DEPARTMENT OF HEALTH

Renee Mallory, RN, BSN
Interim Secretary of Health

Jennifer Dillaha, MD
Director

Outbreak Response/Epidemiology Influenza Weekly Report Arkansas 2022-2023

Week Ending Saturday 10/29/2022

Mike Cima, PhD
State Epidemiologist

Shirley Louie, MS, CIH
Deputy State Epidemiologist

Prepared by:

Haytham Safi, MD, MPH
Epidemiology Supervisor
Influenza Surveillance Coordinator
Haytham.Safi@Arkansas.gov
501-661-2920

Reviewed by:

Lori Simmons, MS
Branch Chief, Epidemiology

November 2, 2022

During flu season, the Arkansas Department of Health (ADH) produces a Weekly Influenza Report for clinicians. The report provides information on flu activity in the state. The report also compares influenza-like-illness (ILI) in Arkansas to activity in the U.S. ADH receives reports of only a fraction of flu cases since it only requires reports of hospitalizations, deaths, and outbreaks. Therefore, it is important to understand that the information in the weekly update is representative of the timing and location of activity, but it does not reflect the overall burden of disease. It is presumed that there are many more people actually affected than the report shows. Clinicians and policy makers may find the report helpful in terms of communicating to colleagues and patients about the current status of the flu season.

Report Key Points:

- For Week 43, Arkansas reported “High” or 9 out of 13 for Influenza-Like-Illness (ILI) activity level indicator determined by data reported to ILINet.
- Since October 2, 2022, 3,180 positive influenza tests have been reported to the ADH online database by health care providers. **Please note that reported cases reflect only a portion of the actual numbers of flu cases in the state.**
- Among flu antigen tests this season that can distinguish between influenza A and B virus types in Arkansas, 86 percent were influenza A, and 14 percent were influenza B.
- Over 4 percent of patients visiting emergency rooms this week were there for ILI (Syndromic Surveillance). About 4 percent of outpatient visits were for ILI (ILINet sentinel providers).
- The average school absenteeism rate last week was 7.7 percent among public schools.
- Arkansas reported 4 influenza-related deaths this flu season. In 2021-22 season, Arkansas reported 30 influenza-related deaths.
- Three (3) nursing homes have reported influenza outbreaks this season.
- Nationally, the proportion of deaths reported to the National Center for Health Statistics attributed to pneumonia and influenza (P&I) is above the epidemic threshold this week.

You can report flu year-round and view the weekly influenza report during the influenza season at: <http://www.healthy.arkansas.gov/programs-services/topics/influenza>. You can also access the reporting website directly at: <https://FluReport.ADH.Arkansas.gov>.

For Additional National and International Influenza Surveillance Information:

World Health Organization (WHO): <https://www.who.int/tools/flunet>

CDC - Seasonal Influenza (Flu) - Weekly Report: <http://www.cdc.gov/flu/weekly/>

2022-2023 Influenza Outbreak Response/Epi Report (Week 43: 10/23/2022 – 10/29/2022)

Death Report for Week 43

- Deaths from all causes: 739
- Deaths due to Pneumonia: 53
- PCR confirmed Flu Deaths: 0
- Death Certificate or Flu Antigen only: 1

Cumulative Flu Deaths since 10/02/2022

- PCR confirmed Flu deaths: 1
- Death Certificate or Antigen only: 3
- Cumulative Flu deaths: 4

Total Flu-Related Hospital Admissions

- Cumulative: 50
- Week ending 10/29/2022: 17

Weekly Arkansas ILI Intensity Level Reported by Sentinel Providers



PCR Lab Confirmed Influenza Cases

- Total Cases since 10/02/2022: 326
- Week ending 10/29/2022: 140

Reported cases reflect only a portion of the actual numbers of flu cases in the state.

PCR Tests	Week 43	Cumulative Cases Since 10/02/2022
A+	134	302
B+	4	10
Both A and B	1	5
B/Victoria	0	0
B/ Yamagata	0	0
H1N1+	1	6
H3+	0	3
Unsubtypeable	0	0
Total	140	326

PCR Confirmed Influenza Cases since 10/02/2022

Age Groups	PCR+	Hospitalized	Deaths
0-4 yr.	21	0	0
5-17 yr.	135	2	0
18-24 yr.	20	0	0
25-44 yr.	61	3	0
45-64 yr.	53	8	1
>= 65 yr.	36	18	0
Unknown	0	0	0
Total	326	31	1

School Absenteeism*

- Week Ending: 10/29/2022
 - Percent Absent: 7.68
 - Previous Week: 8.01

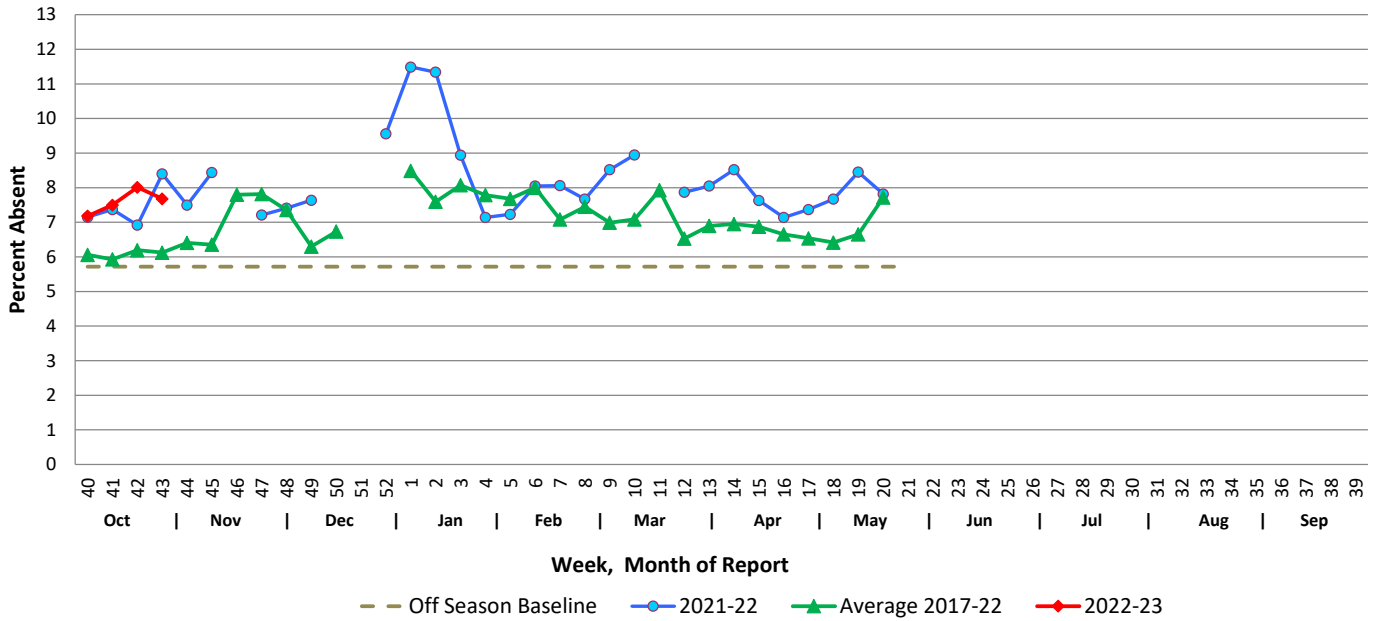
* Average daily absenteeism for all public schools during this reporting week.

ER Visits (Syndromic Surveillance)

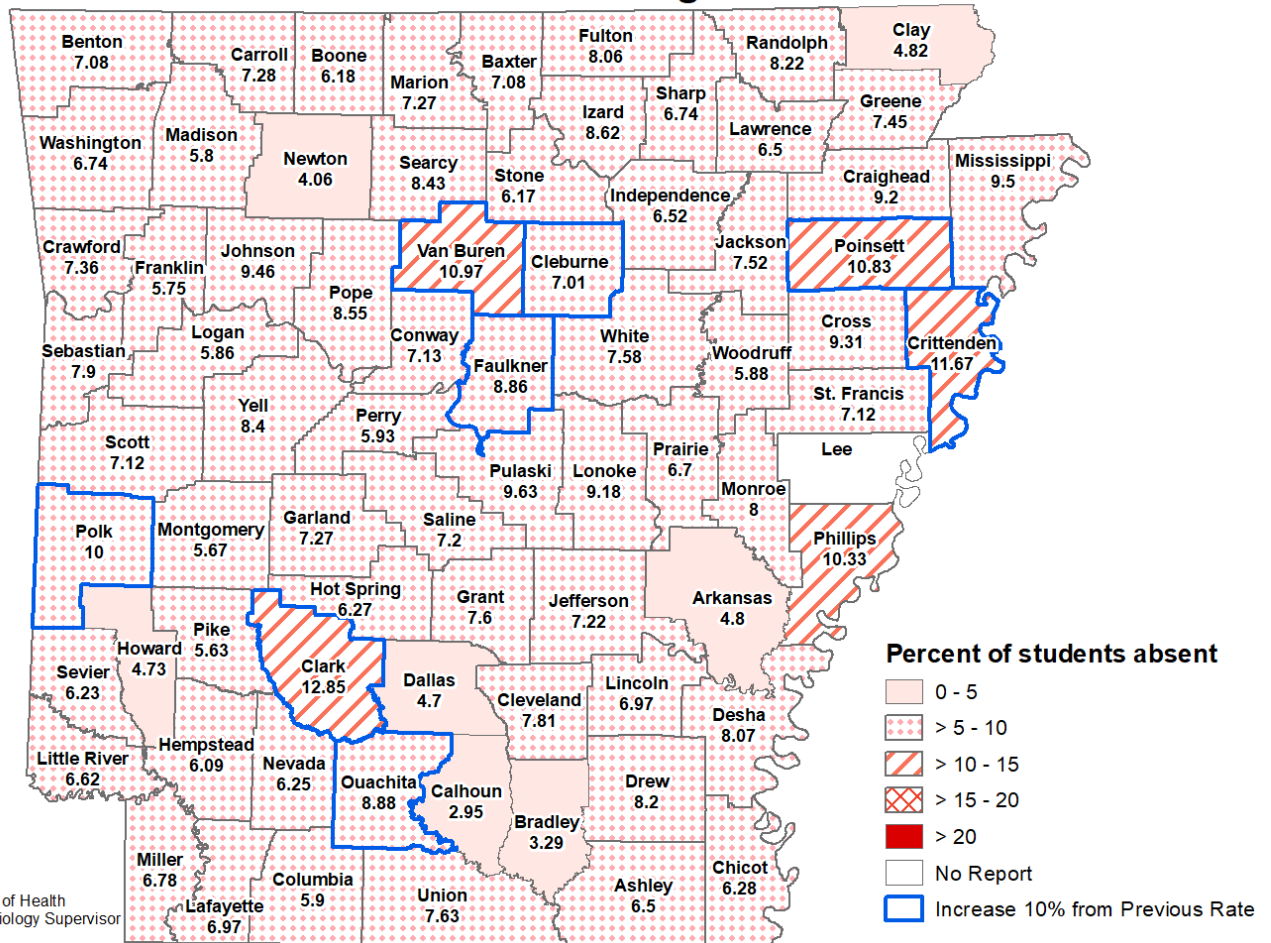
- **Week Ending: 10/29/2022**
Weighted Average: 4.20%
 - Total Visits: 19,838
 - Visits with ILI: 833
- **Previous Week**
Weighted Average: 3.11%
 - Total Visits: 19,402
 - Visits with ILI: 604

School Report

Weekly School Absenteeism Rates, Arkansas Public Schools



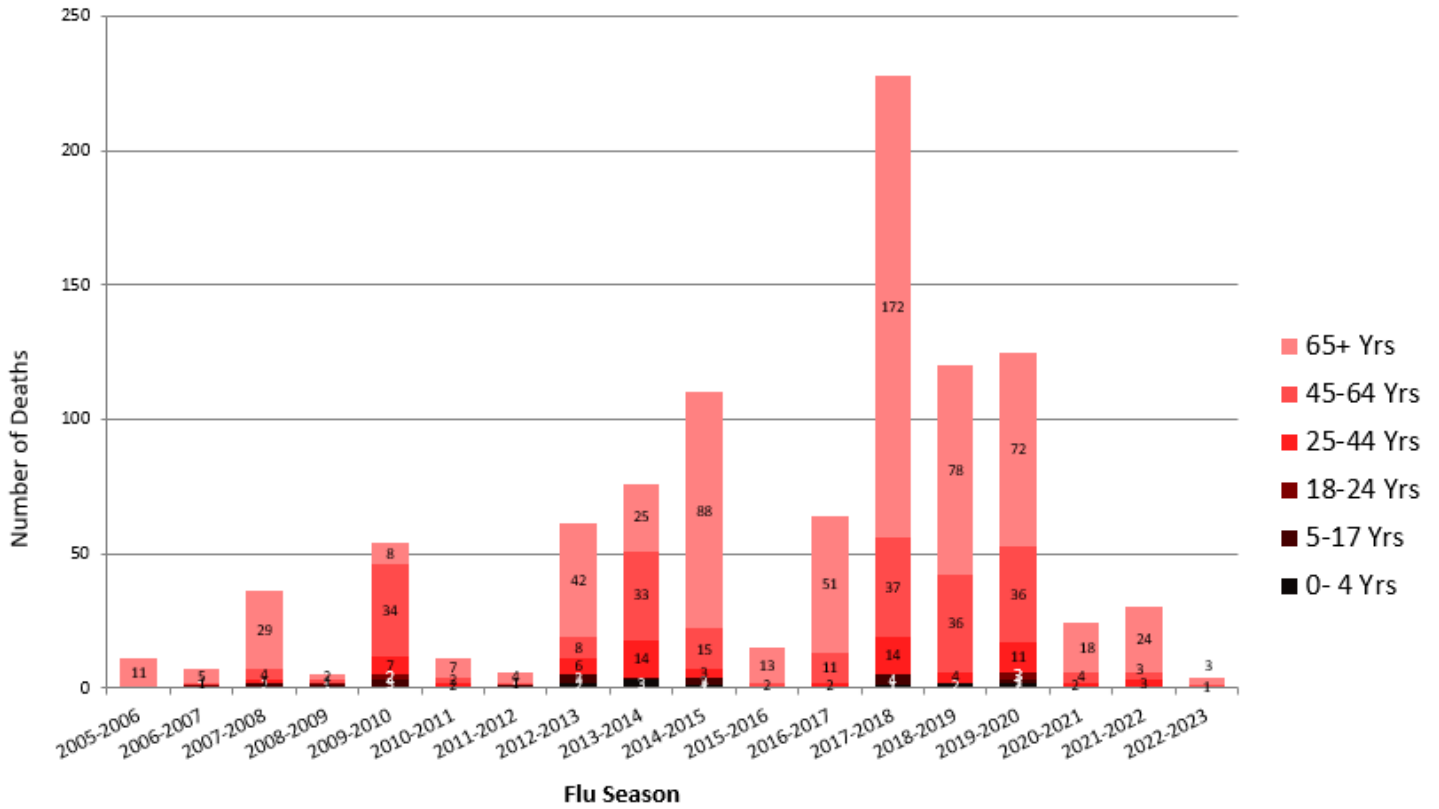
School Absenteeism Rate per County, Arkansas 2022-2023 Percent Absent for Week Ending 10/29/2022



Date: November 1, 2022
 Source: Arkansas Department of Health
 Author: Haytham Safi, Epidemiology Supervisor

Influenza Mortality by Age Group, Arkansas 2005-2023 (Provisional)

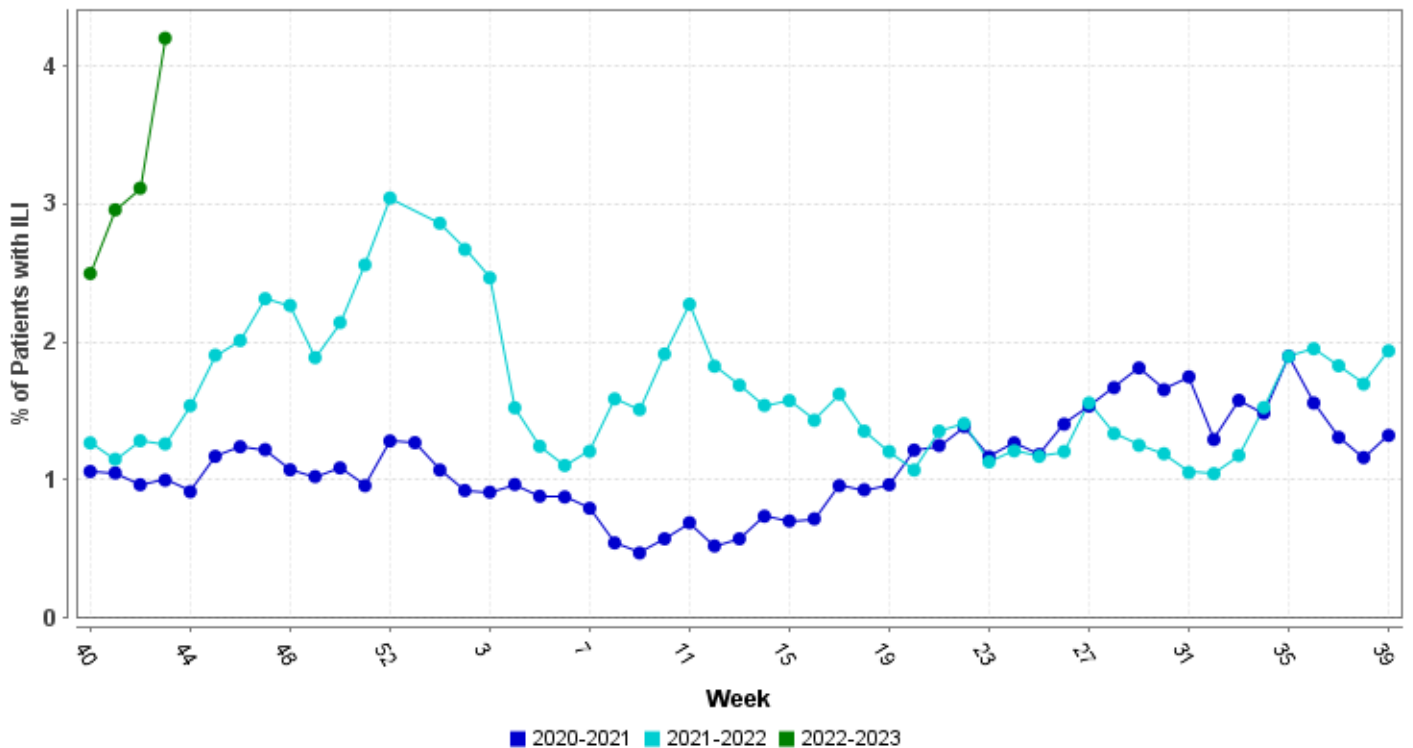
Report Updated: 11/01/2022



* All seasons range from week 40 to week 39 except 2009-2010 started week 36
 Source: ADH Outbreak Response Section, and Center for Health Statistics

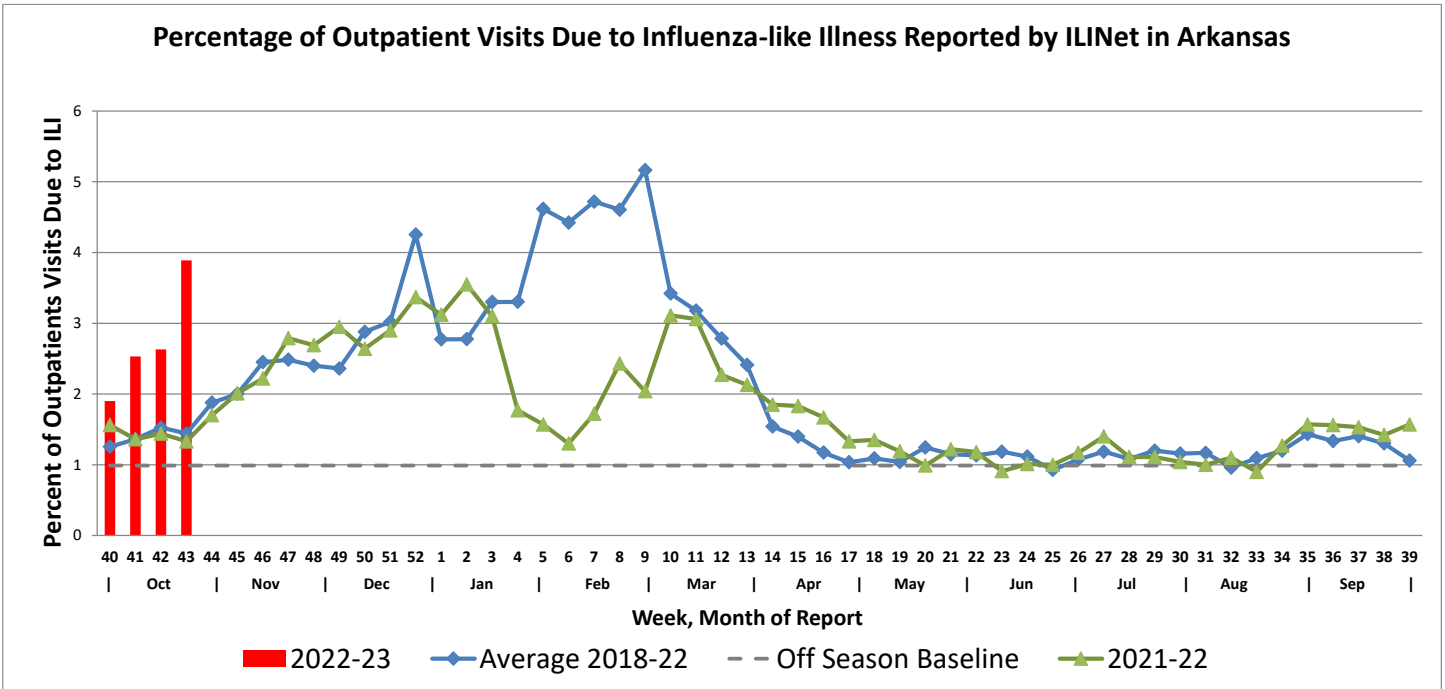
Hospital Report – Downloaded from ESSENCE (Syndromic Surveillance)

Percent ER Visits with ILI

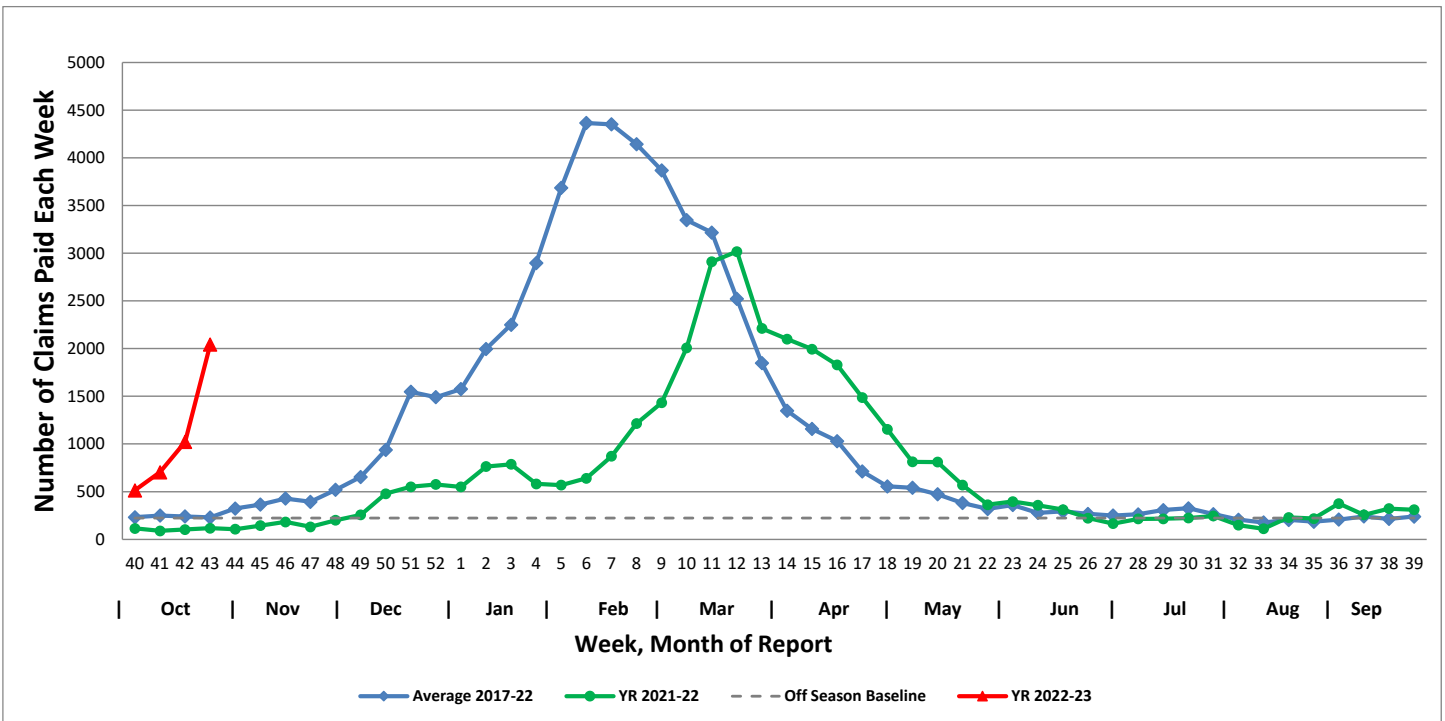


Arkansas Subset of US Outpatients Influenza Surveillance (ILINET)

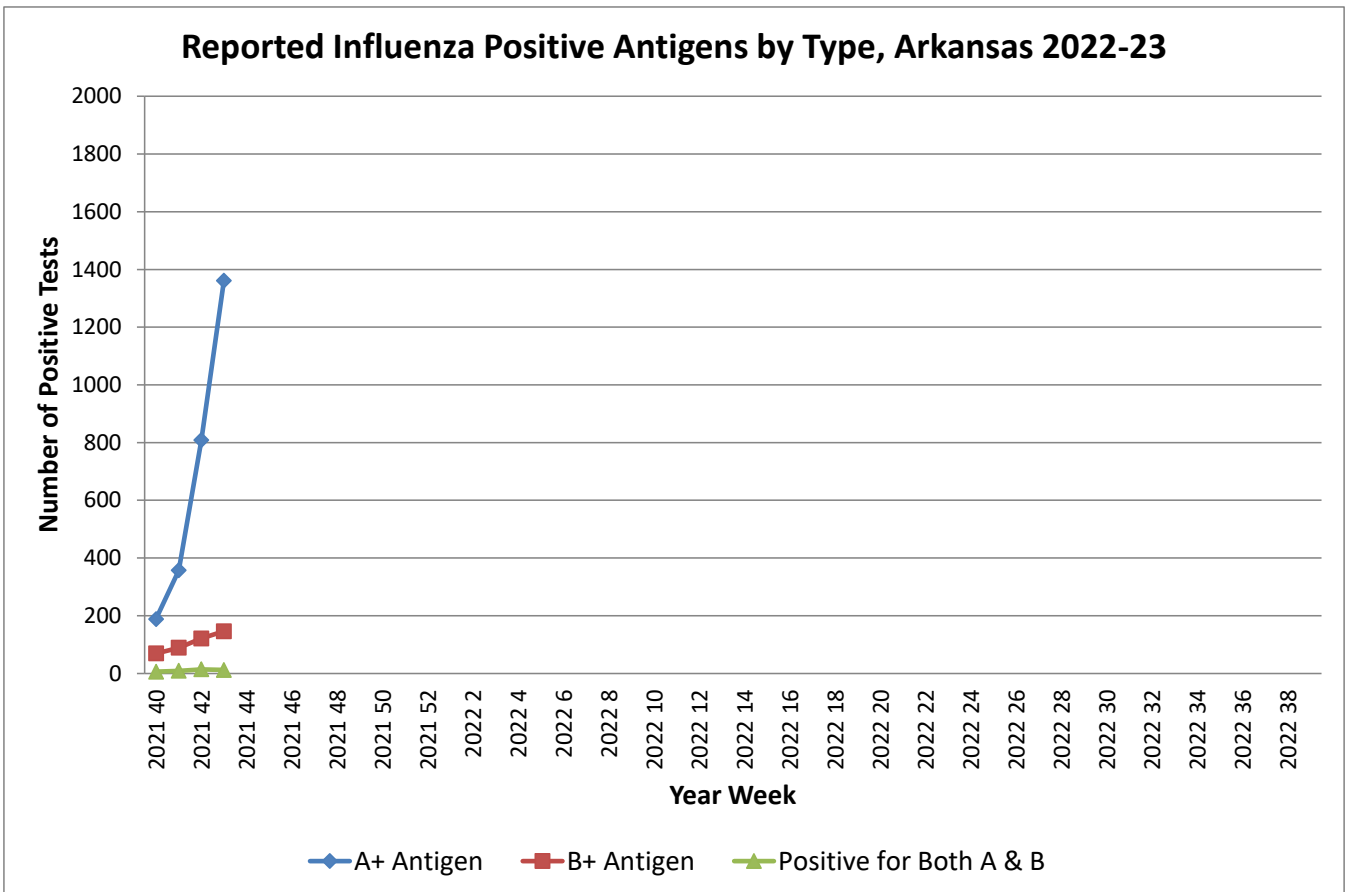
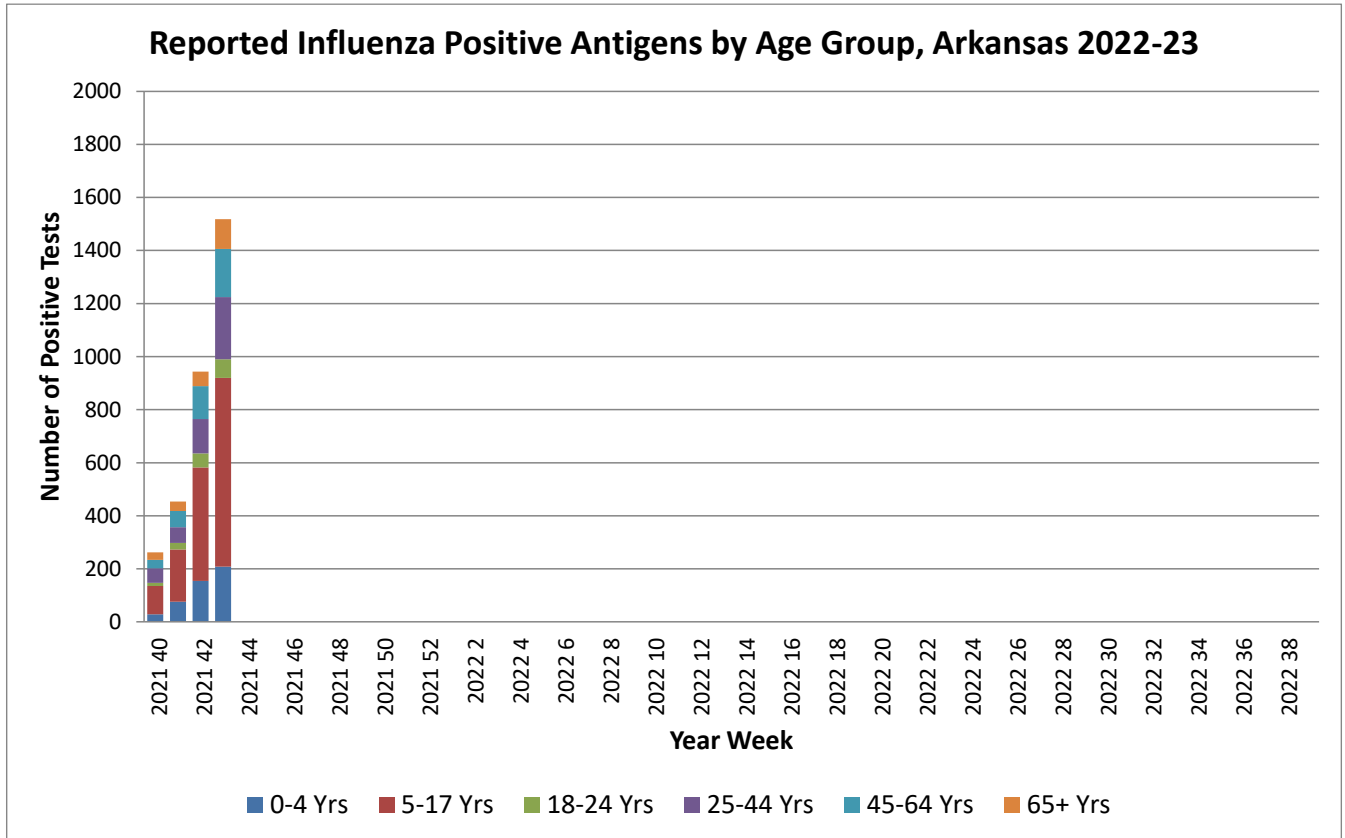
Percentage of Outpatient Visits Due to Influenza-like Illness Reported by ILINet in Arkansas



Weekly Influenza Claims Paid by Medicaid and BCBS of Arkansas

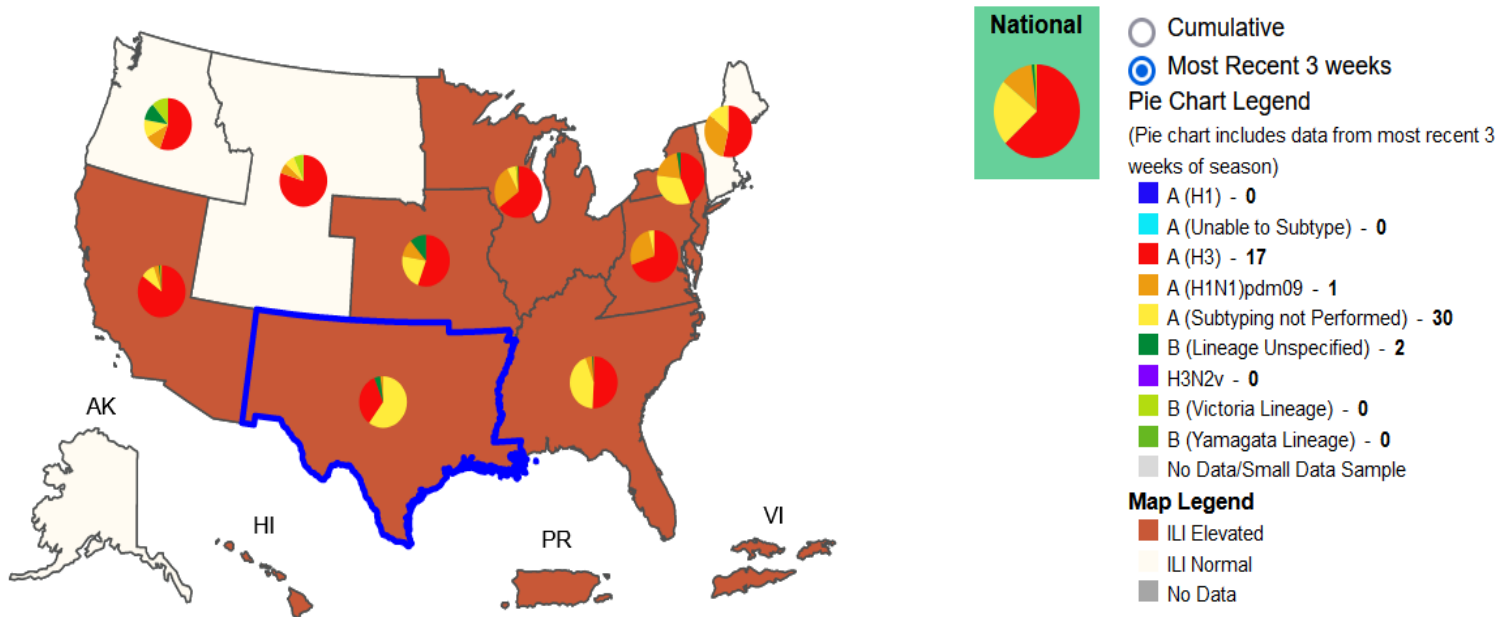


Antigen Report

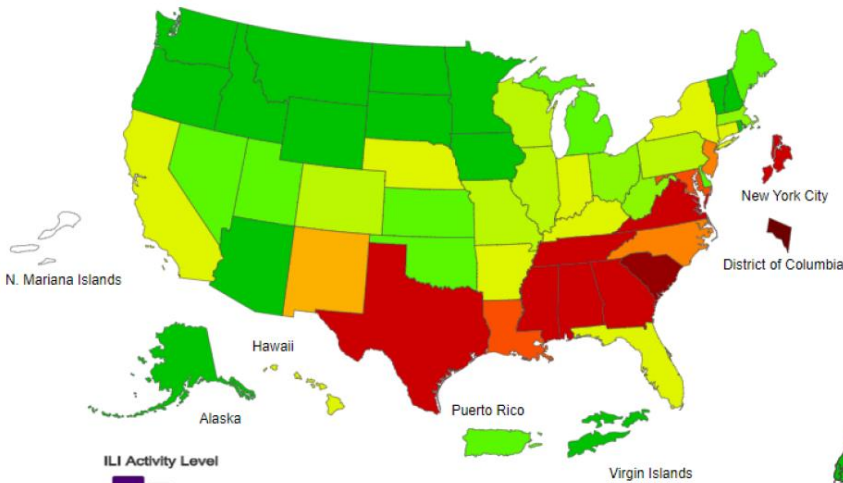


Influenza Positive Tests Reported to CDC and ILI Activity, by HHS Region Public Health Labs, 2021-2022 Season, Week Ending October 22, 2022

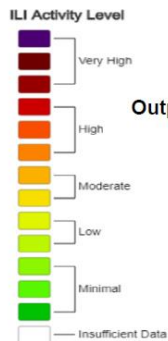
Values in legend are for the highlighted HHS region (Region 6) for the most recent 3 weeks



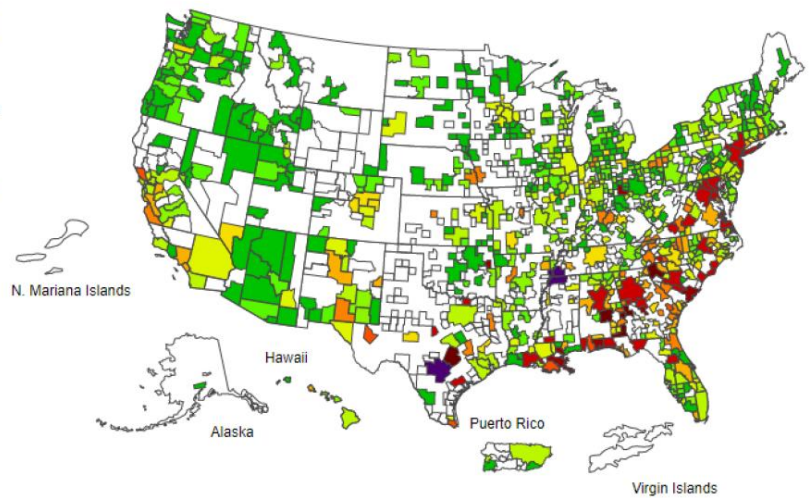
Influenza-Like-Illness Activity Level Indicator Determined by Data Reported to ILINet



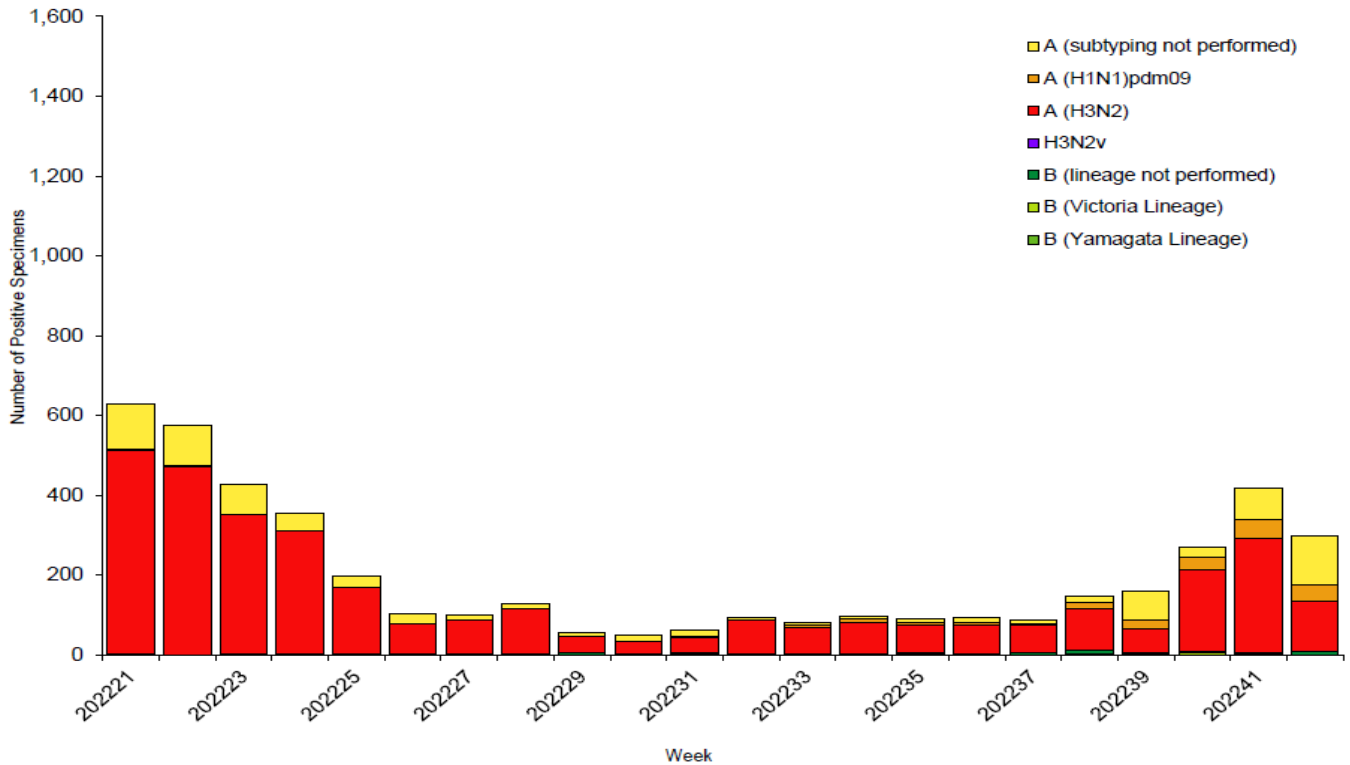
This system monitors visits for ILI (fever and cough or sore throat), not laboratory confirmed influenza and may capture patient visits due to other respiratory pathogens that cause similar symptoms.



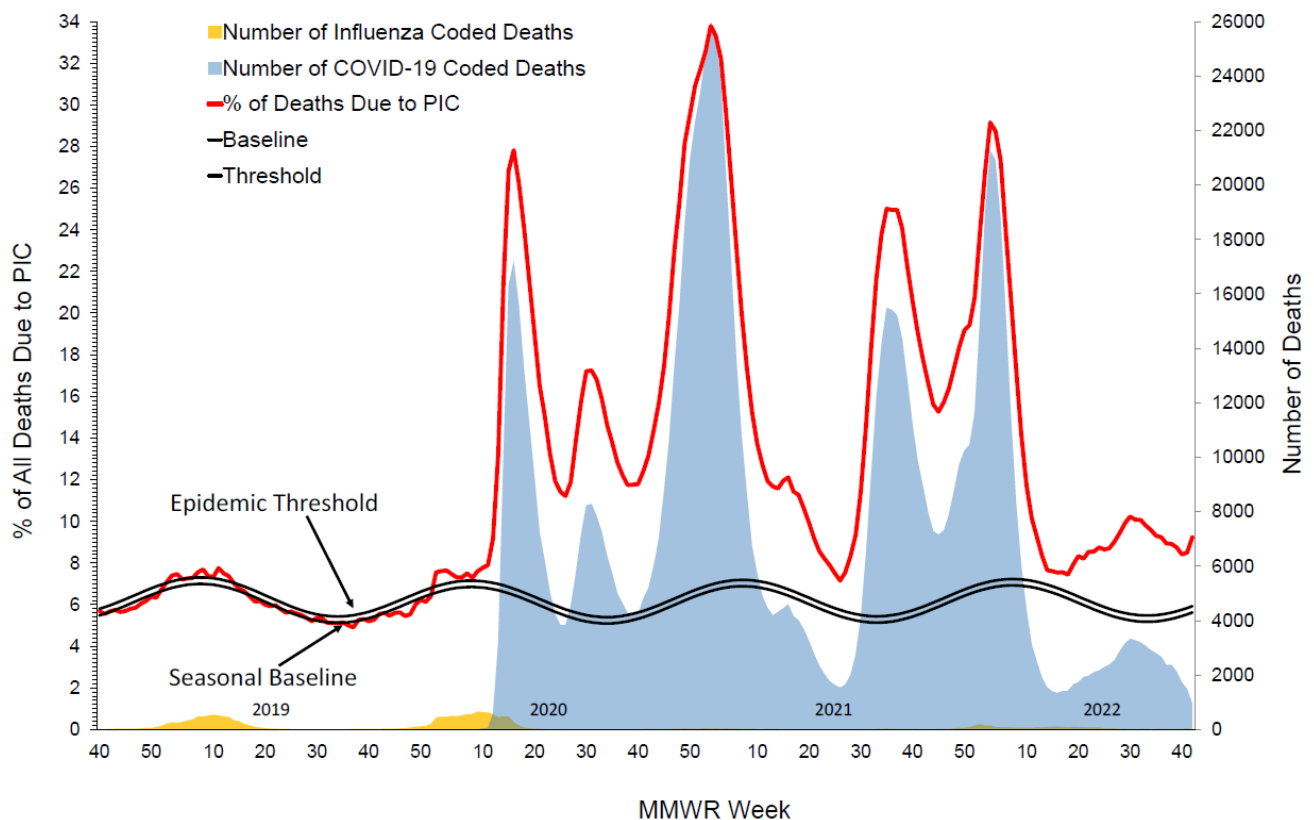
Outpatient Respiratory Illness Activity by CBSA
Week 42, ending October 22, 2022



Influenza Positive Tests Reported to CDC by U.S. Public Health Laboratories, National Summary, May 22, 2022 – October 22, 2022



Pneumonia, Influenza and COVID Mortality from the National Center for Health Statistics Mortality Surveillance System Data as of October 27, 2022, National Data



Percentage of All Deaths due to Pneumonia, Influenza, and COVID-19, as of October 27, 2022, Arkansas Data

