



ARKANSAS DEPARTMENT OF HEALTH

Nathaniel Smith, MD, MPH, Secretary of Health

Outbreak Response/Epidemiology Influenza Weekly Report Arkansas 2019-2020

Week Ending Saturday 01/18/2020

Shirley Louie, MS, CIH

Acting State Epidemiologist; Director, Center for Public Health Practice

Prepared by:

Haytham Safi, MD, MPH

Influenza Surveillance Coordinator

Haytham.Safi@Arkansas.gov

501-661-2920

Reviewed by:

Lori Simmons, MS, Branch Chief, Epidemiology

Kellye McCartney, Branch Chief, Immunizations/Outbreak Control

Jennifer Dillaha, MD, Medical Director, Immunizations/Outbreak Response

Mike Cima, PhD, Chief Epidemiologist, Associate Director for Science, CHP

During flu season, the Arkansas Department of Health (ADH) produces a Weekly Influenza Report for clinicians. The report provides information on flu activity in the state. The report also compares influenza-like-illness (ILI) in Arkansas to activity in the U.S. ADH receives reports of only a fraction of flu cases since it only requires reports of hospitalizations, deaths, and outbreaks. Therefore, it is important to understand that the information in the weekly update is representative of the timing and location of activity, but it does not reflect the overall burden of disease. It is presumed that there are many more people actually affected than the report shows. Clinicians and policy makers may find the report helpful in terms of communicating to colleagues and patients about the current status of the flu season.

Report Key Points:

- For Week 3, Arkansas reported “Widespread” activity to the Centers for Disease Control and Prevention (CDC) for geographic spread of influenza, and “High” or 10 out of 10 for ILI intensity.
- Since September 29, 2019, 10,700 positive influenza tests have been reported to the ADH online database by health care providers, with over 1,400 positive tests reported this week. **Please note that reported cases reflect only a portion of the actual numbers of flu cases in the state.**
- Among flu antigen tests this season that can distinguish between influenza A and B virus types, 47 percent were influenza A, and 53 percent were influenza B.
- There were 307 positive PCR flu tests from private labs this week: 131 tested positive for influenza A, 175 tested positive for influenza B, and 1 tested positive for both A and B. At the ADH lab, 4 samples tested positive for influenza A Subtype H1N1, 6 samples tested positive for influenza B Subtype Victoria, and 1 sample tested negative for influenza this week.
- About 4.6 percent of patients visiting emergency rooms this week were there for ILI (Syndromic Surveillance). About 5.1 percent of outpatient visits were for ILI (ILINet sentinel providers).
- The average school absenteeism rate last week was 6.2 percent among public schools. As of January 21, 2020, ADH is aware that 2 schools closed briefly due to the flu this season.
- To date, 27 influenza-related deaths have been reported in Arkansas this flu season, one of them was a pediatric death. CDC estimates a total of 6,600 flu deaths have occurred nationwide including 39 pediatric deaths reported this season.
- Since September 29, 2019, 4 facilities including 2 nursing homes have reported influenza outbreaks.
- Nationally, the proportion of deaths reported to the National Center for Health Statistics attributed to pneumonia and influenza (P&I) increased but remains below the epidemic threshold this week.
- For Week 2, the geographic spread of influenza was reported as widespread in Puerto Rico and 48 states, and regional in 1 state. The District of Columbia and 1 state reported local activity, the U.S. Virgin Islands reported sporadic activity, and Guam did not report.
- You can report flu year-round and view the weekly influenza report during the influenza season at: <http://www.healthy.arkansas.gov/programs-services/topics/influenza>. You can also access the reporting website directly at: <https://FluReport.ADH.Arkansas.gov>.

For Additional National and International Influenza Surveillance Information:

World Health Organization (WHO): http://www.who.int/influenza/gisrs_laboratory/flunet/en/index.html.

CDC - Seasonal Influenza (Flu) - Weekly Report: <http://www.cdc.gov/flu/weekly/>

2019-2020 Influenza Outbreak Response/Epi Report (Week 3: 01/12/2020 – 01/18/2020)

Death Report for Week 3

- Deaths from all causes: 758
- Deaths due to Pneumonia: 60
- PCR confirmed Flu Deaths: 0
- Death Certificate or Flu Antigen only: 4

Cumulative Flu Deaths since 09/29/2019

- PCR confirmed Flu deaths: 2
- Death Certificate or Antigen only: 25
- Cumulative Flu deaths: 27

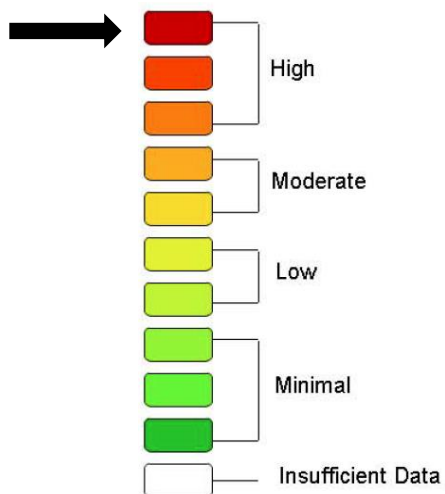
ER Visits (Syndromic Surveillance)

- **Week Ending: 01/18/2020**
Weighted Average: 4.6%
– Total Visits: 21,858
– Visits with ILI: 1,008
- **Previous Week**
Weighted Average: 4.1%
– Total Visits: 21,457
– Visits with ILI: 874

Total Flu-Related Hospital Admissions

- **PCR Confirmed:**
– Cumulative: 132
– Week ending 01/18/2020: 15
- **Antigen Positive:**
– Cumulative: 285
– Week ending 01/18/2020: 33

Weekly Arkansas ILI Intensity Level Reported by Sentinel Providers



PCR Lab Confirmed Influenza Cases

- Total Cases since 09/29/2019: 1,865
- Week ending 01/18/2020: 317

Reported cases reflect only a portion of the actual numbers of flu cases in the state.

PCR Tests	ADH Lab Week 3	Other Labs Week 3	Cumulative Cases Since 09/29/2019
A+	0	131	895
B+	0	175	917
Both A and B	0	1	16
B/Victoria	6	0	20
B/ Yamagata	0	0	0
H1N1+	4	0	16
H3+	0	0	1
Unsubtypeable	0	0	0
Total	10	307	1,865
Negative	1	--	--

PCR Confirmed Influenza Cases since 09/29/2019

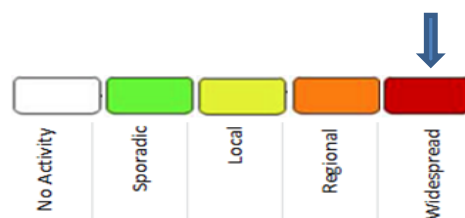
Age Groups	PCR+	Hospitalized	Deaths
0-4 yr.	386	10	0
5-18 yr.	749	5	0
19-24 yr.	95	6	0
25-44 yr.	289	19	0
45-64 yr.	228	43	2
>= 65 yr.	106	49	0
Unknown	12	0	0
Total	1,865	132	2

School Absenteeism*

Week Ending: 01/18/2020
 - Percent Absent: 6.2
 - Previous Week: 5.7

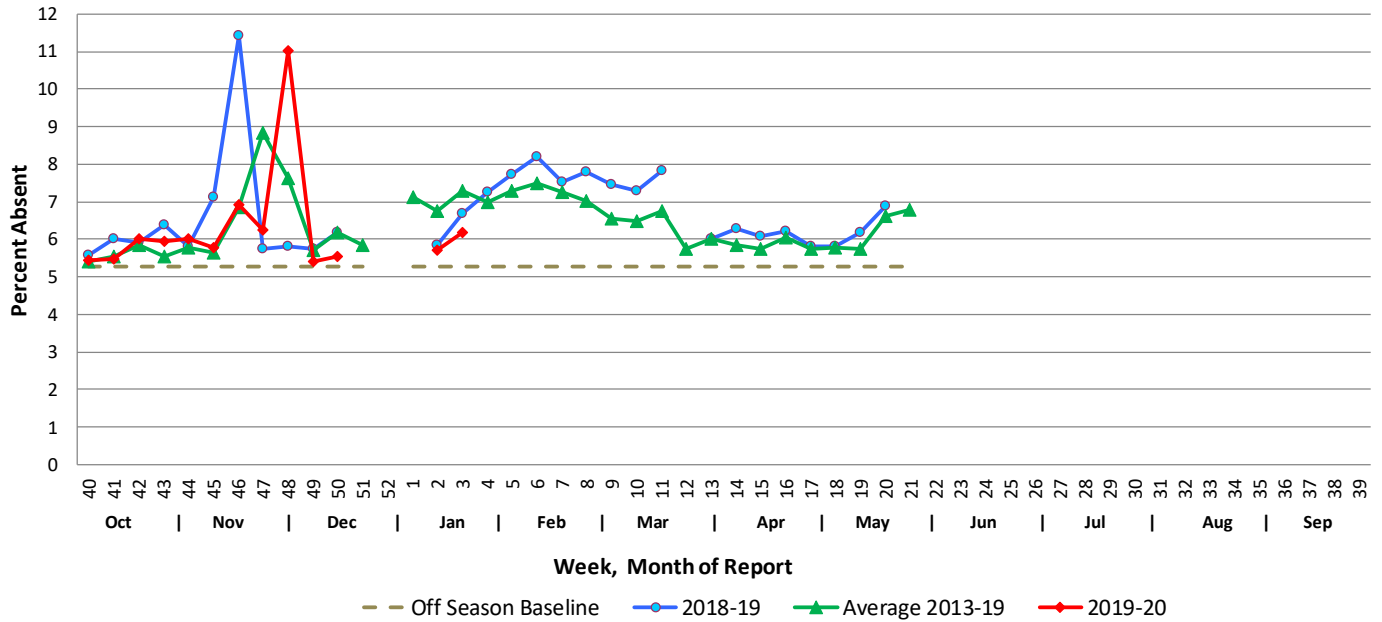
* Average daily absenteeism for all public schools during this reporting week.

Geographic ILI Activity Level Reported for Week 3:

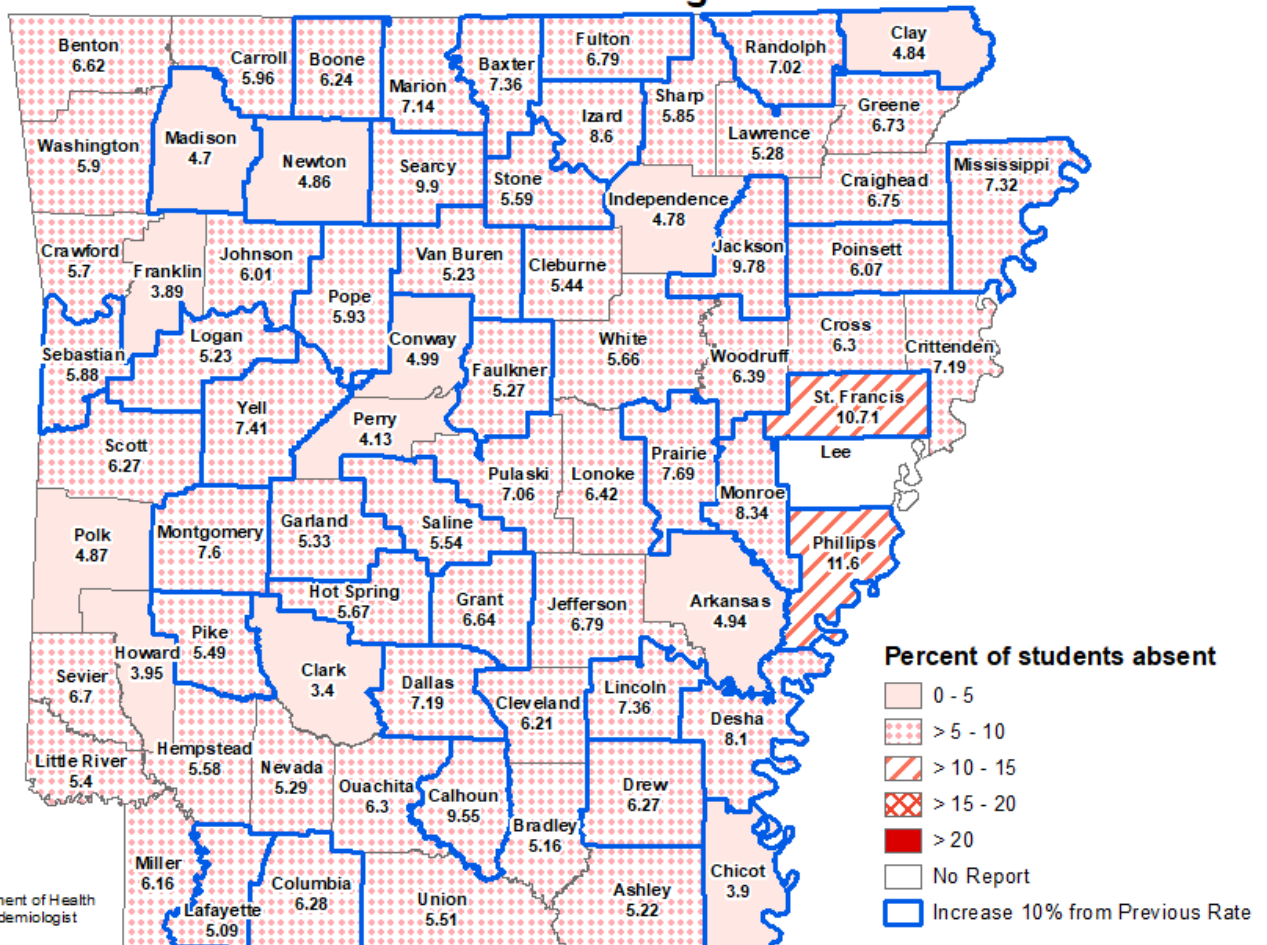


School Report

Weekly School Absenteeism Rates, Arkansas Public Schools



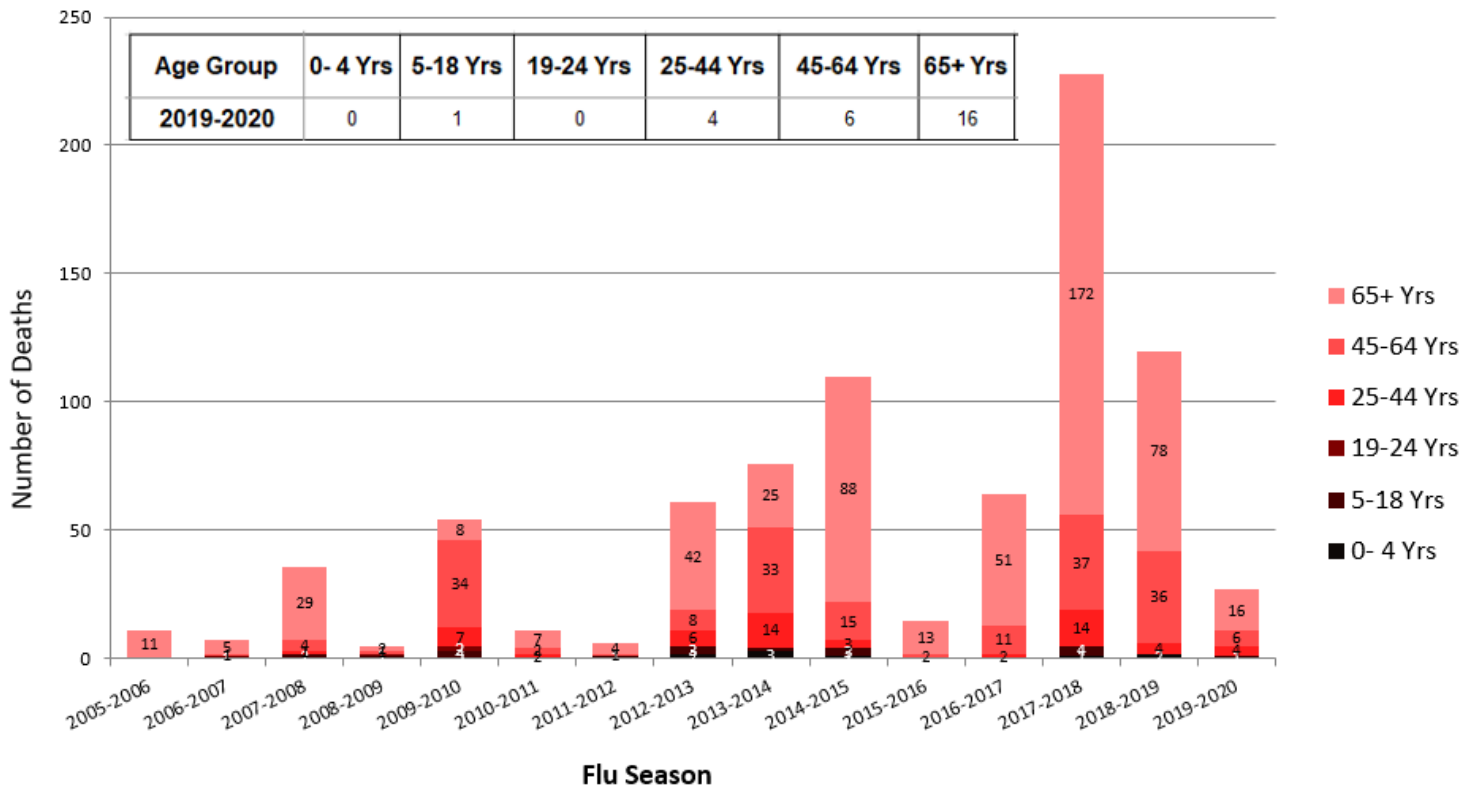
School Absenteeism Rate per County, Arkansas 2019-2020 Percent Absent for Week Ending 1/18/2020



Date: January 21, 2020
Source: Arkansas Department of Health
Author: Haytham Safi, Epidemiologist

Influenza Mortality by Age Group, Arkansas 2005-2020 (Provisional)

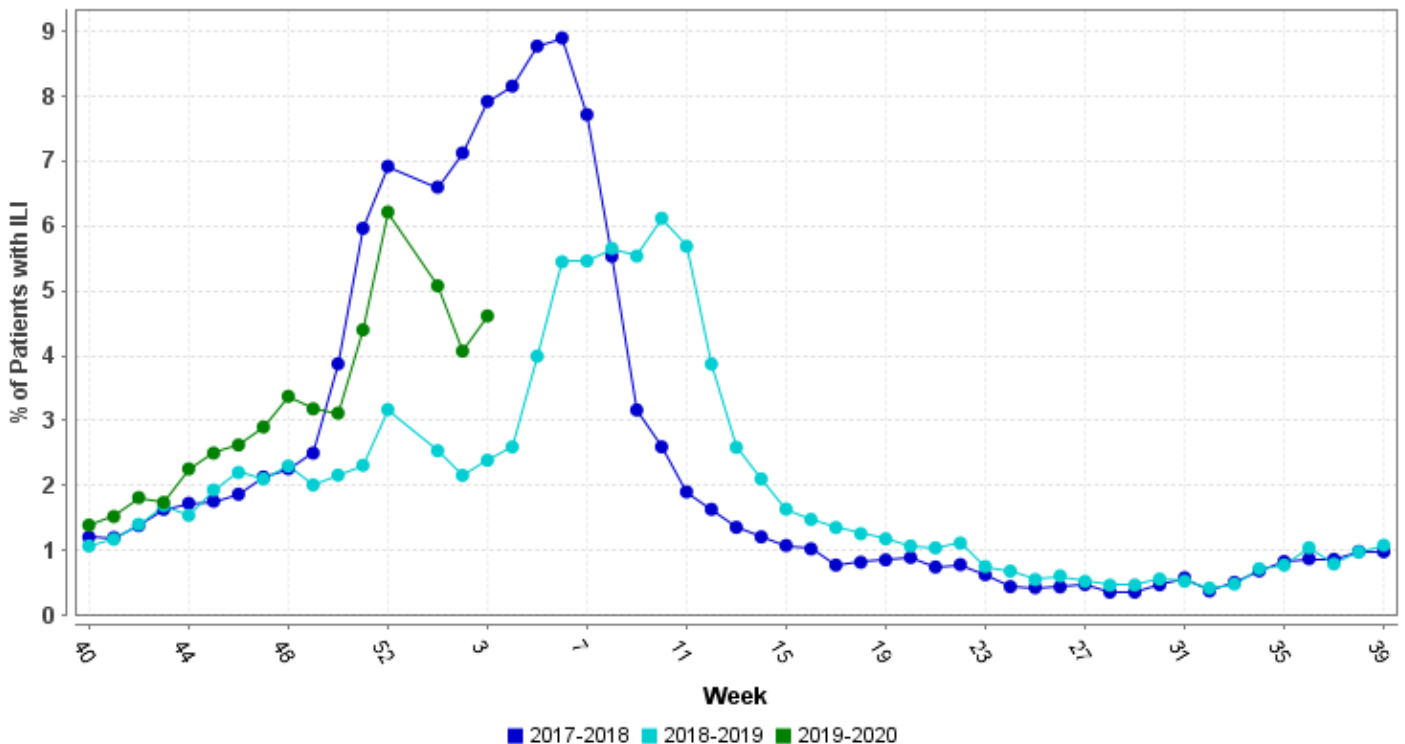
Report Updated: 1/21/2020



* All seasons range from week 40 to week 39 except 2009-2010 started week 36
 Source: ADH Outbreak Response Section, and Center for Health Statistics

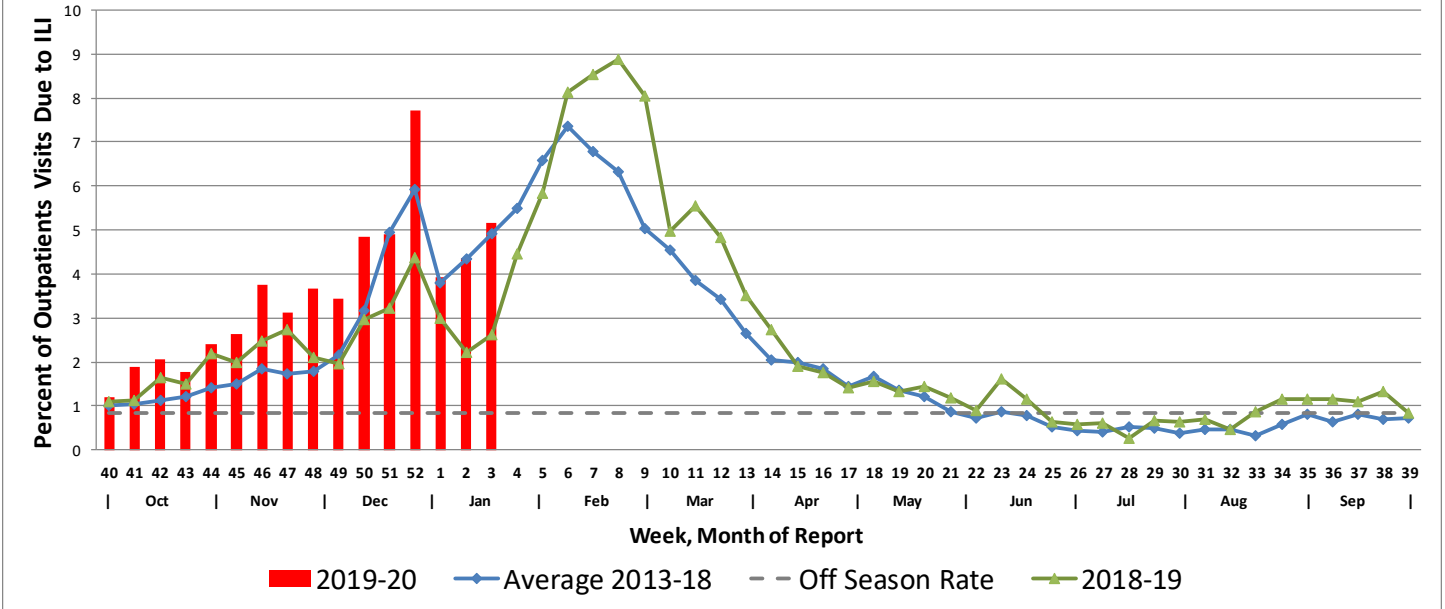
Hospital Report – Downloaded from ESSENCE (Syndromic Surveillance)

Percent ER Visits with ILI

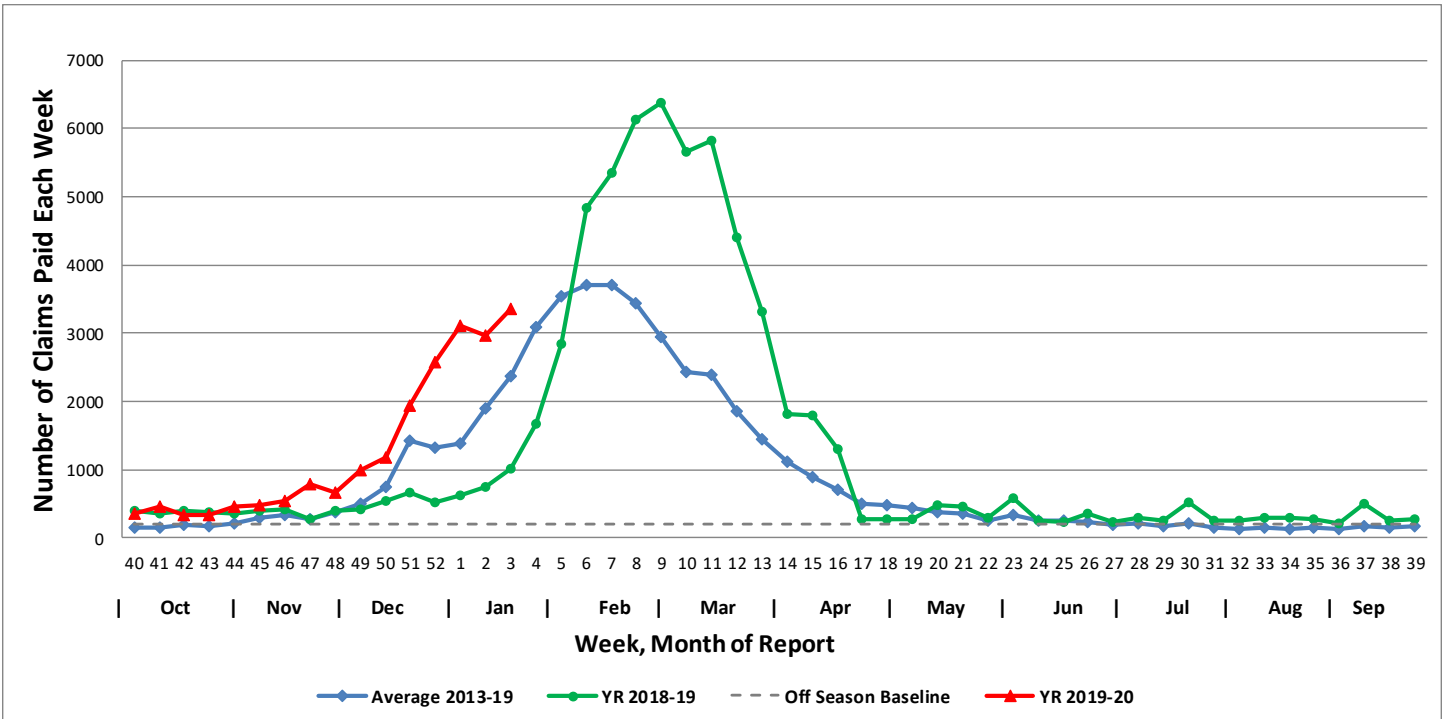


Arkansas Subset of US Outpatients Influenza Surveillance (ILINET)

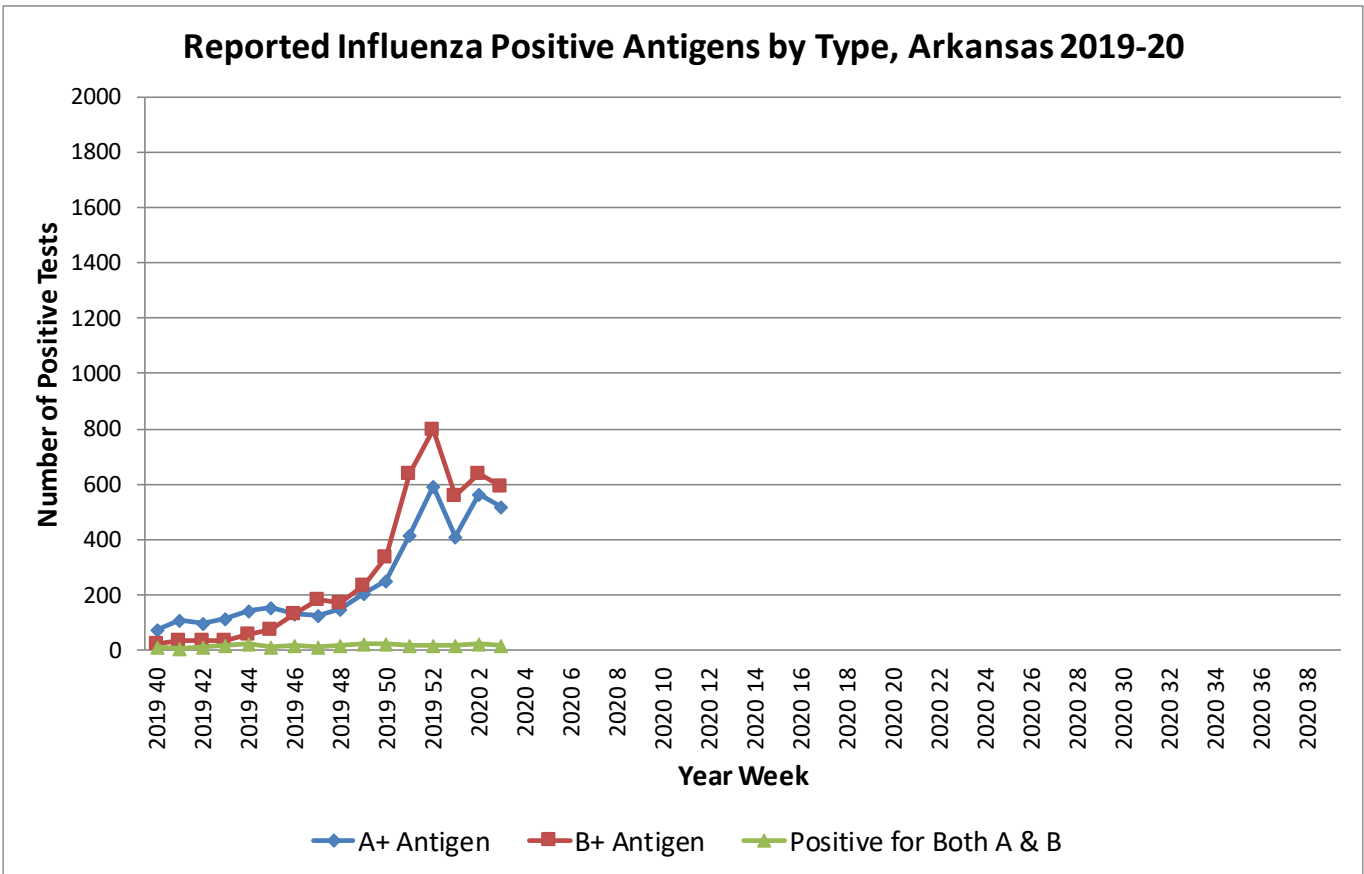
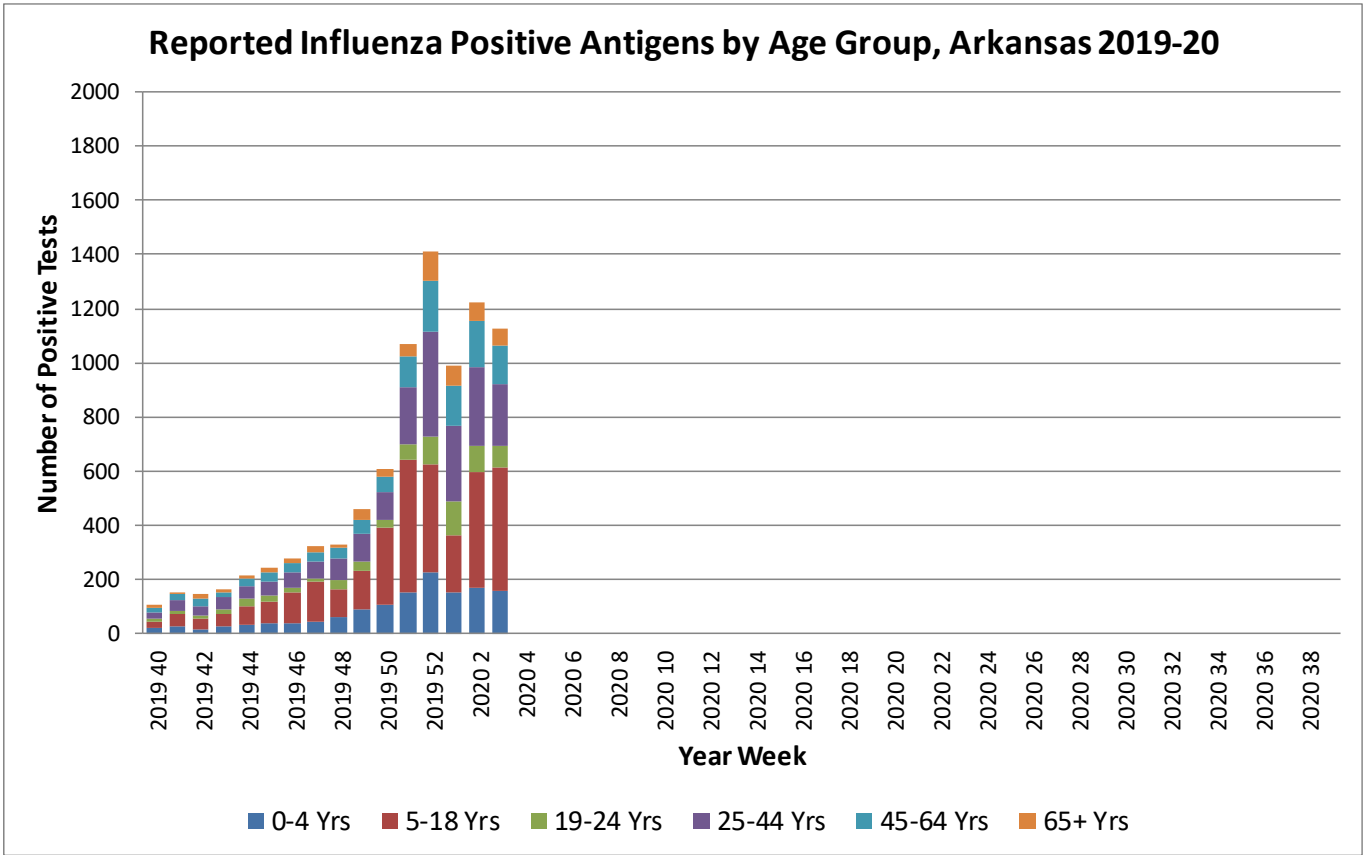
Percentage of Outpatient Visits Due to Influenza-like Illness Reported by ILINET in Arkansas



Weekly Influenza Claims Paid by Medicaid and BCBS of Arkansas

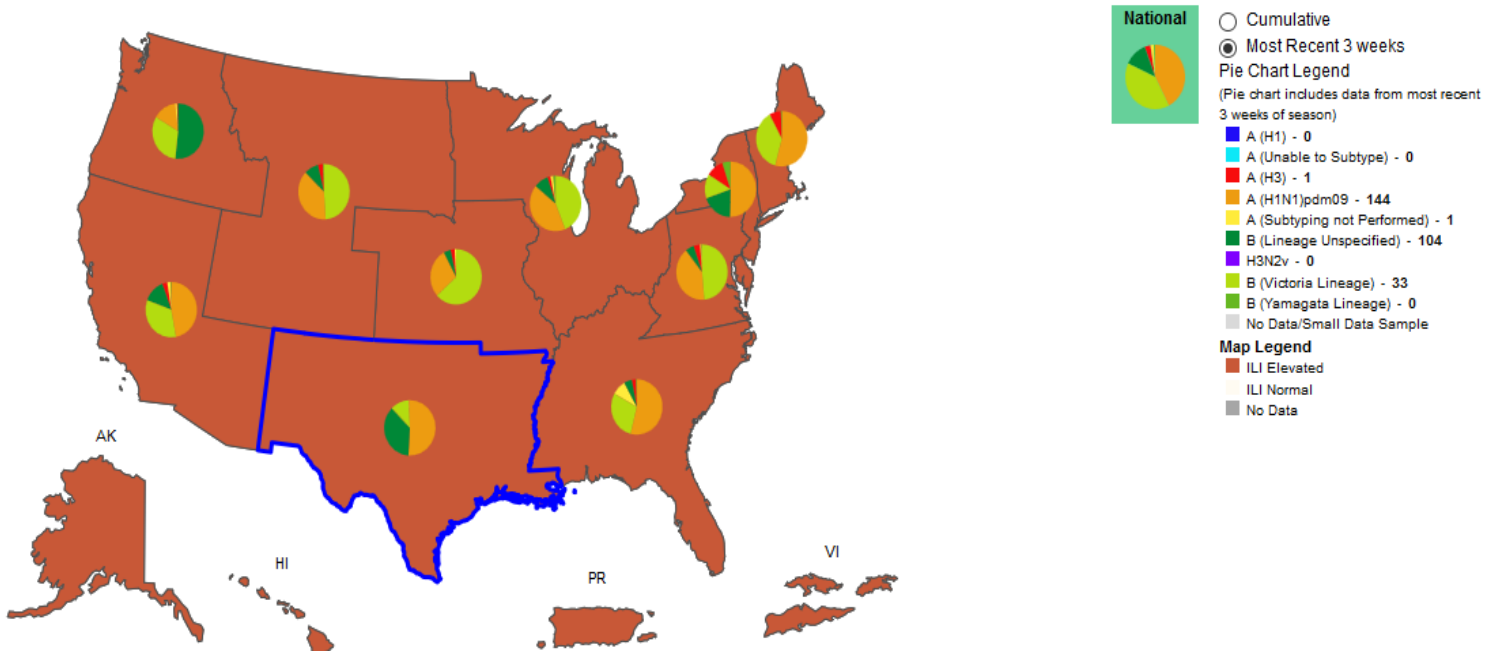


Antigen Report



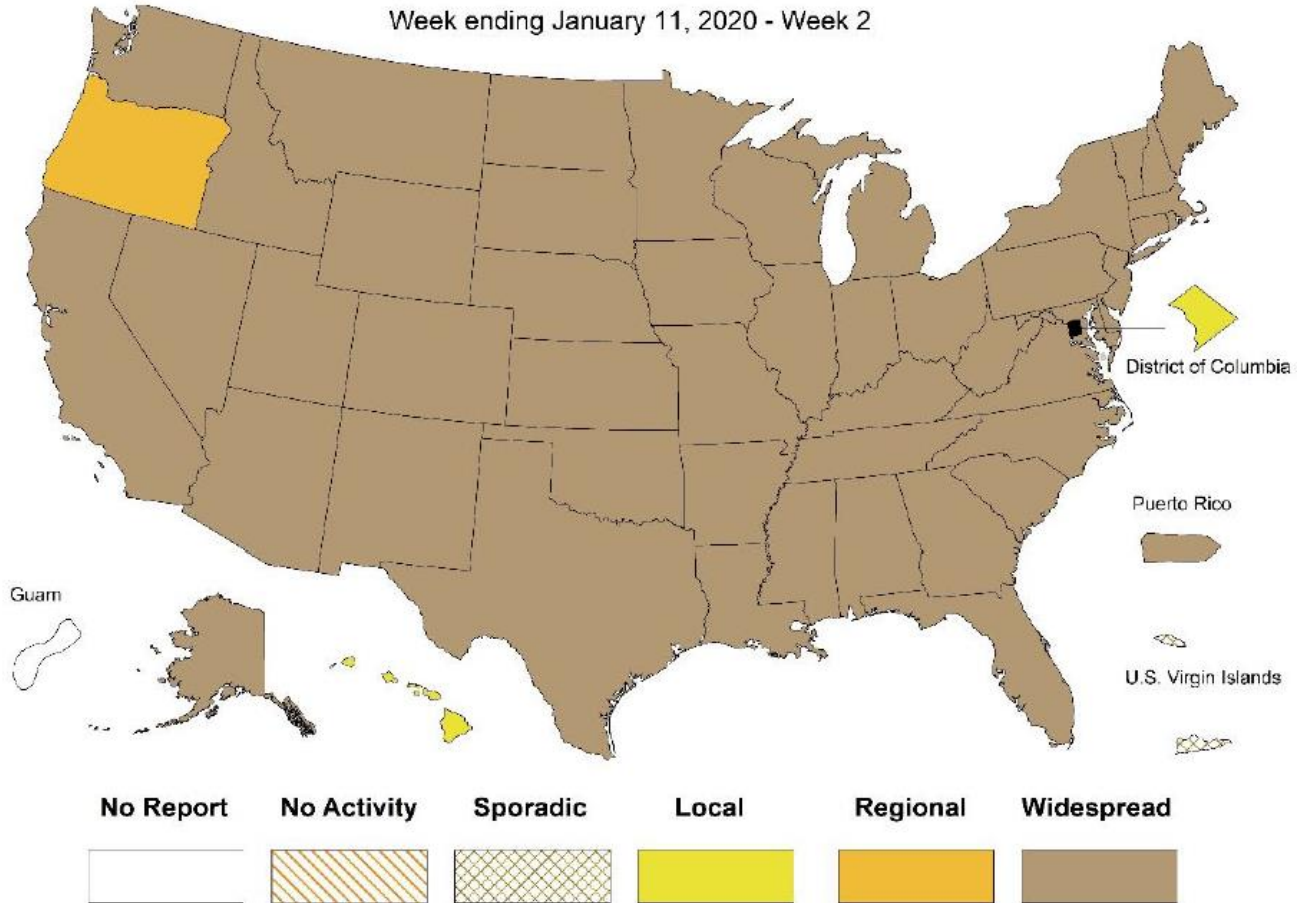
Influenza Positive Tests Reported to CDC and ILI Activity, by HHS Region, 2018-2019 Season, Week Ending January 11, 2020

Values in legend is for the highlighted HHS region (Region 6)



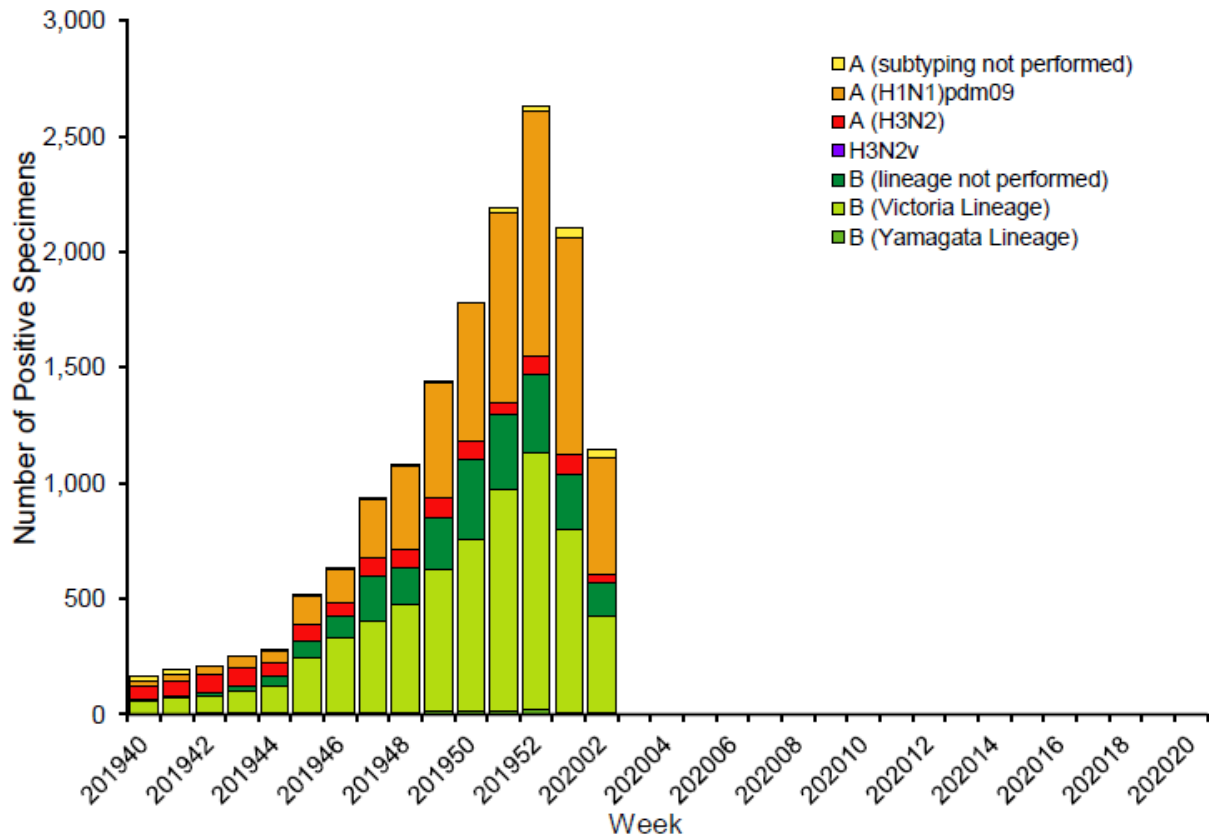
Weekly Influenza Activity Estimates Reported by State and Territorial Epidemiologists

Week ending January 11, 2020 - Week 2



Arkansas Flu Activity Level Reported for Week 3: Widespread

Influenza Positive Tests Reported to CDC by U.S. Public Health Laboratories, National Summary, 2019-2020 Season



Pneumonia and Influenza Mortality from the National Center for Health
Statistics Mortality Surveillance System Data through the week
ending January 4, 2019, as of January 16, 2020

