



# ARKANSAS DEPARTMENT OF HEALTH

**Renee Mallory, RN, BSN**  
Interim Secretary of Health

**Jennifer Dillaha, MD**  
Director

## **Outbreak Response/Epidemiology Influenza Weekly Report Arkansas 2022-2023**

---

**Week Ending Saturday 02/11/2023**

---

**Mike Cima, PhD**  
State Epidemiologist

**Shirley Louie, MS, CIH**  
Deputy State Epidemiologist

**Prepared by:**

**Haytham Safi, MD, MPH**  
Epidemiology Supervisor  
Influenza Surveillance Coordinator  
[Haytham.Safi@Arkansas.gov](mailto:Haytham.Safi@Arkansas.gov)  
501-661-2920

**Reviewed by:**

**Lori Simmons, MS**  
Branch Chief, Epidemiology

**February 15, 2023**

During flu season, the Arkansas Department of Health (ADH) produces a Weekly Influenza Report for clinicians. The report provides information on flu activity in the state. The report also compares influenza-like-illness (ILI) in Arkansas to activity in the U.S. ADH receives reports of only a fraction of flu cases since it only requires reports of hospitalizations, deaths, and outbreaks. Therefore, it is important to understand that the information in the weekly update is representative of the timing and location of activity, but it does not reflect the overall burden of disease. It is presumed that there are many more people actually affected than the report shows. Clinicians and policy makers may find the report helpful in terms of communicating to colleagues and patients about the current status of the flu season.

### **Report Key Points:**

- For Week 6, Arkansas reported “Minimal” or 3 out of 13 for Influenza-Like-Illness (ILI) activity level indicator determined by data reported to ILINet.
- Since October 2, 2022, over 21,400 positive influenza tests have been reported to the ADH by health care providers. **Please note that reported cases reflect only a portion of the actual numbers of flu cases in the state.**
- Among flu antigen tests this season that can distinguish between influenza A and B virus types in Arkansas, 90 percent were influenza A, and 10 percent were influenza B.
- Less than 2 percent of patients visiting emergency rooms this week were there for ILI (Syndromic Surveillance). Less than 2 percent of outpatient visits were for ILI (ILINet sentinel providers).
- The average school absenteeism rate last week was 6.6 percent among public schools.
- Arkansas reported 139 influenza-related deaths this flu season, including 1 pediatric death. Of these, 75% were not vaccinated.
- CDC estimates so far this season, there have been at least 25 million illnesses, 280,000 hospitalizations, and 18,000 deaths from flu nationwide.
- Twenty one (21) nursing homes and other institutions have reported influenza outbreaks this season.
- Nationally, the proportion of deaths reported to the National Center for Health Statistics attributed to pneumonia and influenza (P&I) is above the epidemic threshold this week.

You can report flu year-round and view the weekly influenza report during the influenza season at: <http://www.healthy.arkansas.gov/programs-services/topics/influenza>. You can also access the reporting website directly at: <https://FluReport.ADH.Arkansas.gov>.

### **For Additional National and International Influenza Surveillance Information:**

**World Health Organization (WHO):** <https://www.who.int/tools/flunet>

**CDC - Seasonal Influenza (Flu) - Weekly Report:** <http://www.cdc.gov/flu/weekly/>

# 2022-2023 Influenza Outbreak Response/Epi Report (Week 6: 02/5/2023 – 02/11/2023)

## Death Report for Week 6

- Deaths from all causes: 745
- Deaths due to Pneumonia: 71
- PCR confirmed Flu Deaths: 0
- Death Certificate or Flu Antigen only: 1

## Cumulative Flu Deaths since 10/02/2022

- PCR confirmed Flu deaths: 55
- Death Certificate or Antigen only: 84
- Cumulative Flu deaths: 139

## Total Flu-Related Hospital Admissions

- Cumulative: 1,603
- Week ending 02/11/2023: 17

## Weekly Arkansas ILI Intensity Level Reported by Sentinel Providers



## PCR Lab Confirmed Influenza Cases

- Total Cases since 10/02/2022: 4,614
- Week ending 02/11/2023: 34

*Reported cases reflect only a portion of the actual numbers of flu cases in the state.*

PCR Tests	Week 6	Cumulative Cases Since 10/02/2022
A+	24	4,353
B+	9	81
Both A and B	0	30
B/Victoria	0	0
B/ Yamagata	0	0
H1N1+	0	103
H3+	1	47
Unsubtypeable	0	0
<b>Total</b>	<b>34</b>	<b>4,614</b>

## PCR Confirmed Influenza Cases since 10/02/2022

Age Groups	PCR+	Hospitalized	Deaths
0-4 yr.	472	55	0
5-17 yr.	1044	32	1
18-24 yr.	269	12	0
25-44 yr.	859	104	4
45-64 yr.	979	325	20
>= 65 yr.	989	541	30
Unknown	2	0	0
<b>Total</b>	<b>4,614</b>	<b>1,069</b>	<b>55</b>

## School Absenteeism\*

Week Ending: 02/11/2023  
 - Percent Absent: 6.61  
 - Previous Week: 7.17

\* Average daily absenteeism for all public schools during this reporting week.

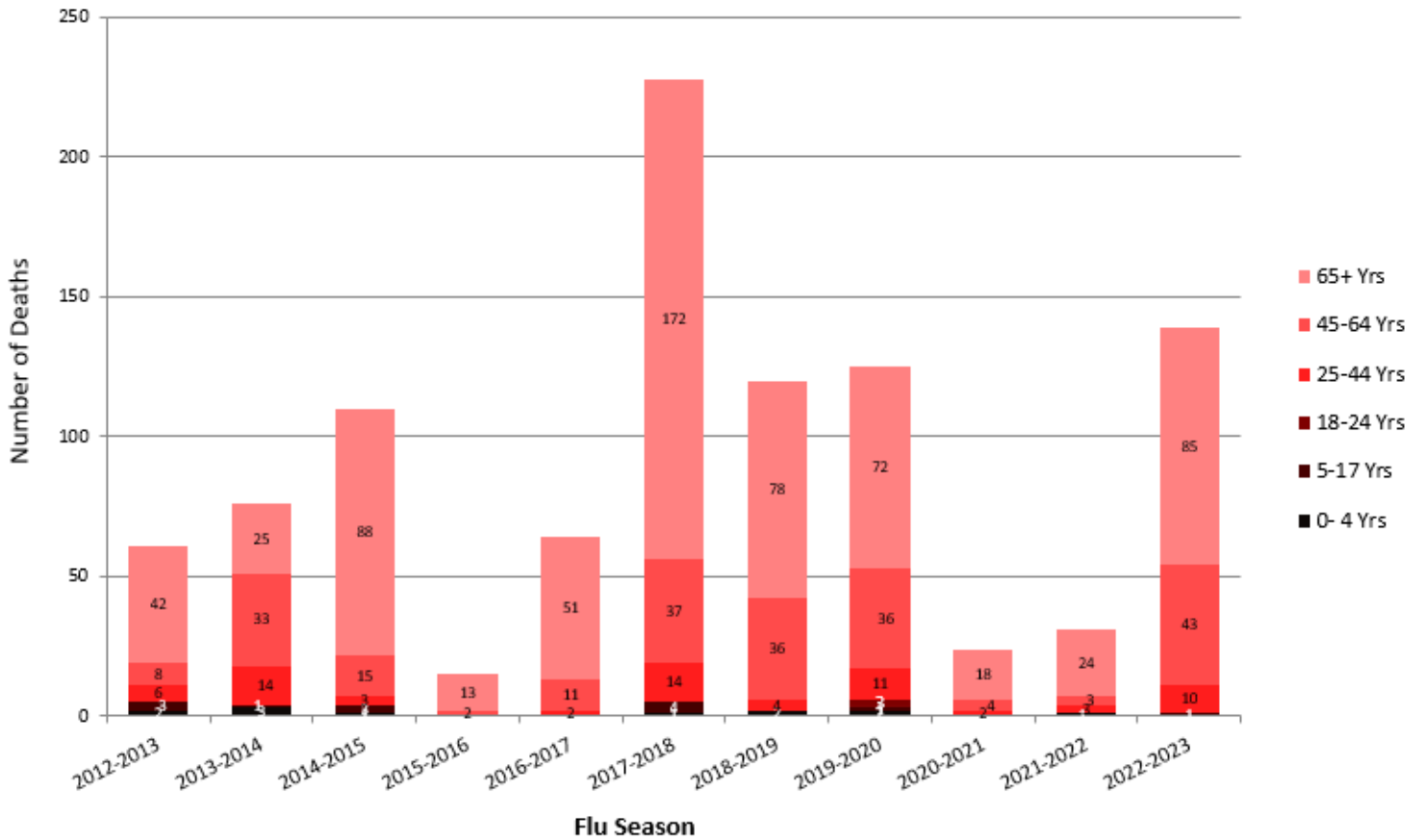
## ER Visits (Syndromic Surveillance)

- **Week Ending: 02/11/2023**  
 Weighted Average: 1.76%  
 – Total Visits: 18,193  
 – Visits with ILI: 321
- **Previous Week**  
 Weighted Average: 2.43%  
 – Total Visits: 16,331  
 – Visits with ILI: 397



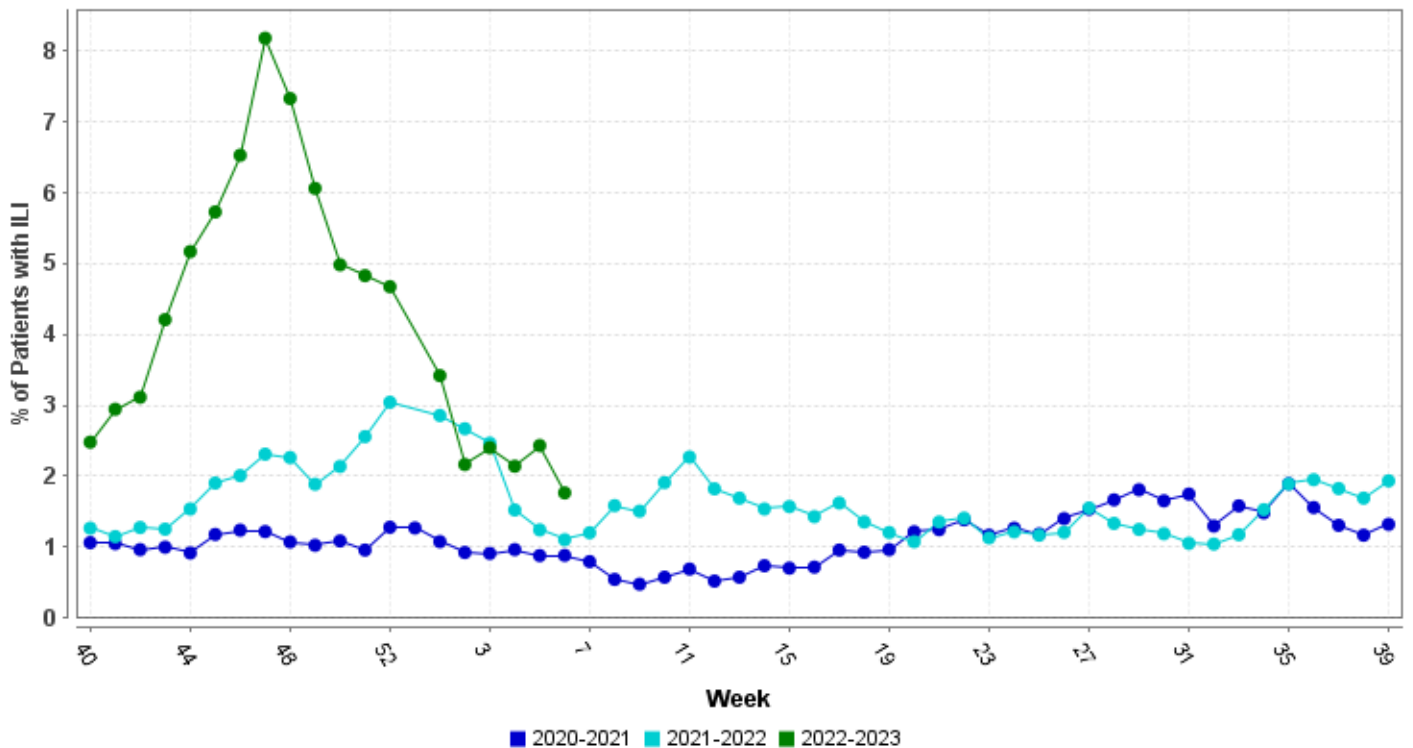
## Influenza Mortality by Age Group, Arkansas 2012-2023 (Provisional)

Report Updated: 02/14/2023



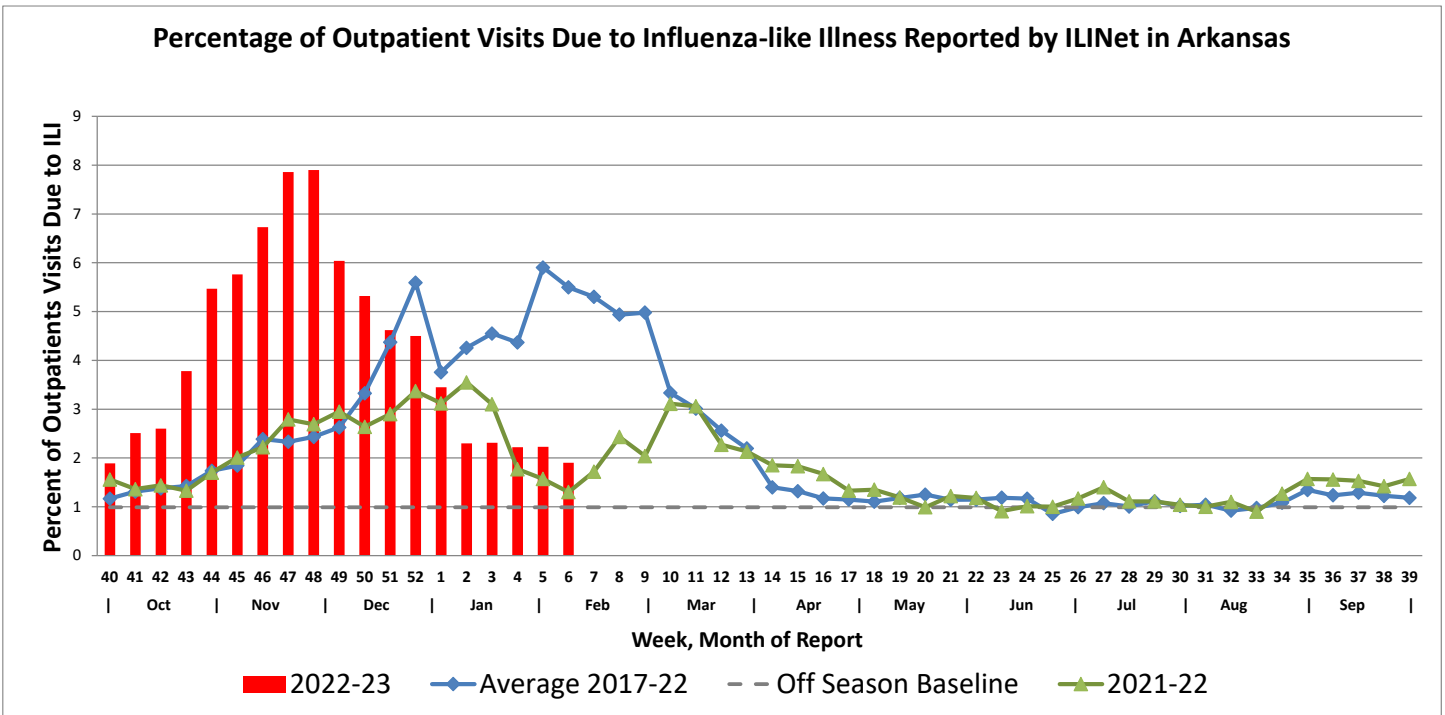
## Hospital Report – Downloaded from ESSENCE (Syndromic Surveillance)

### Percent ER Visits with ILI

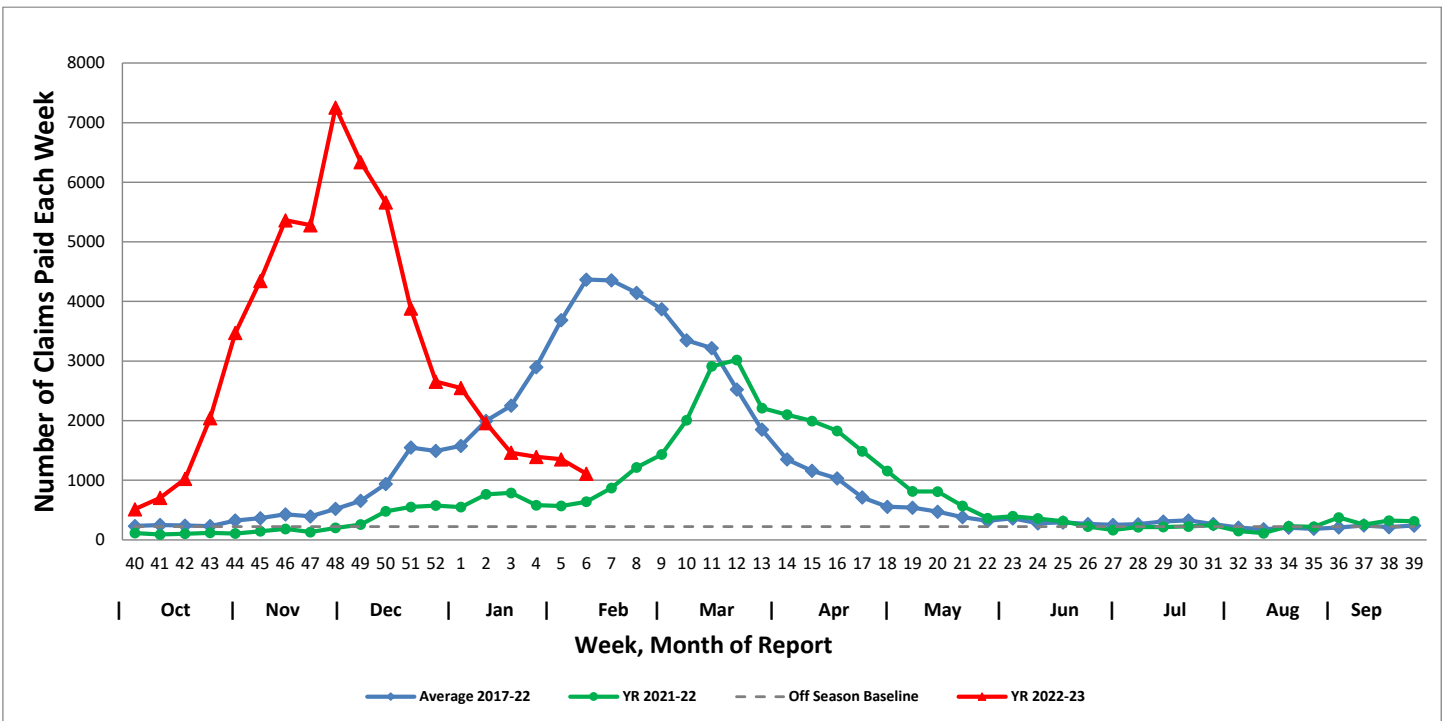


# Arkansas Subset of US Outpatients Influenza Surveillance (ILINET)

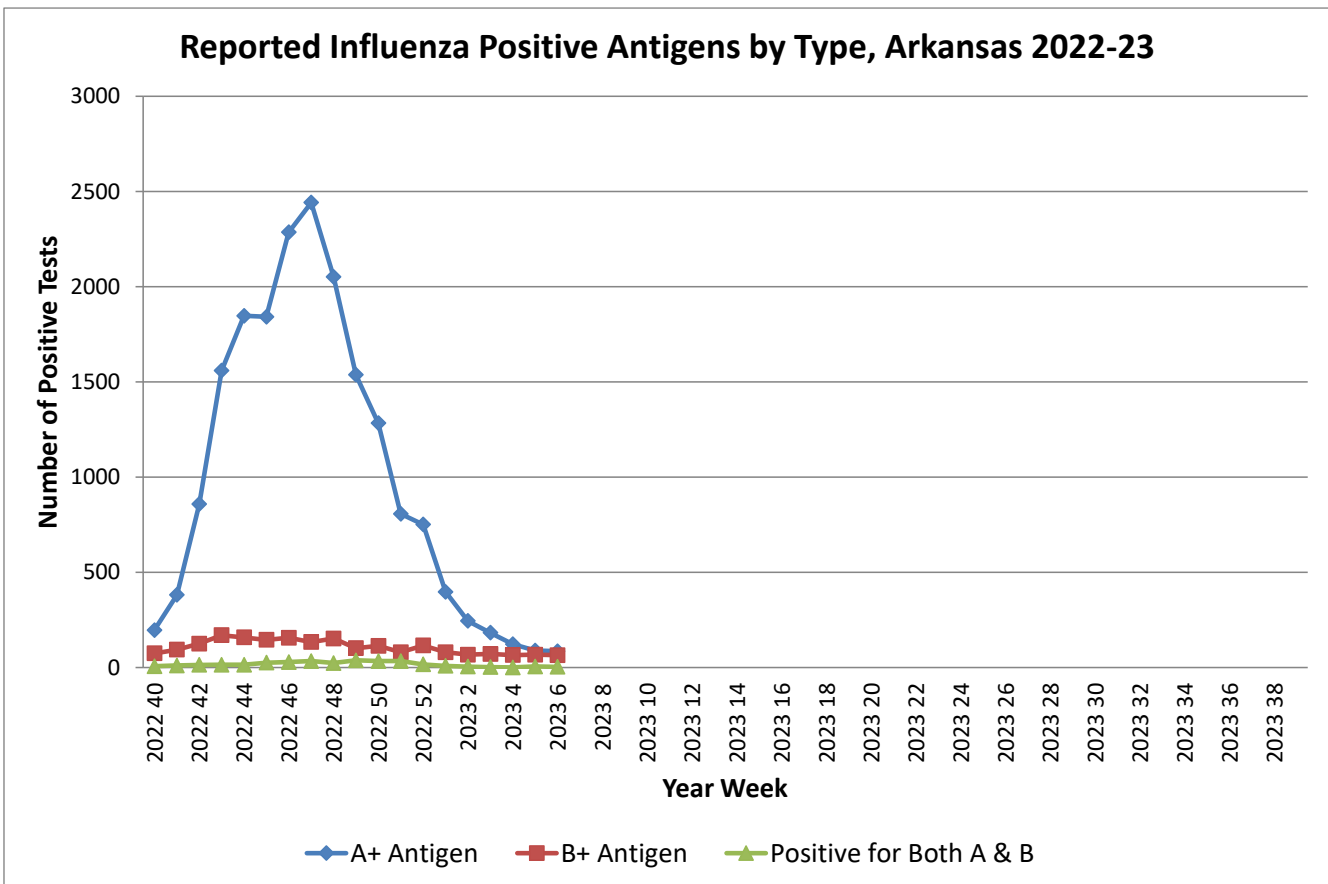
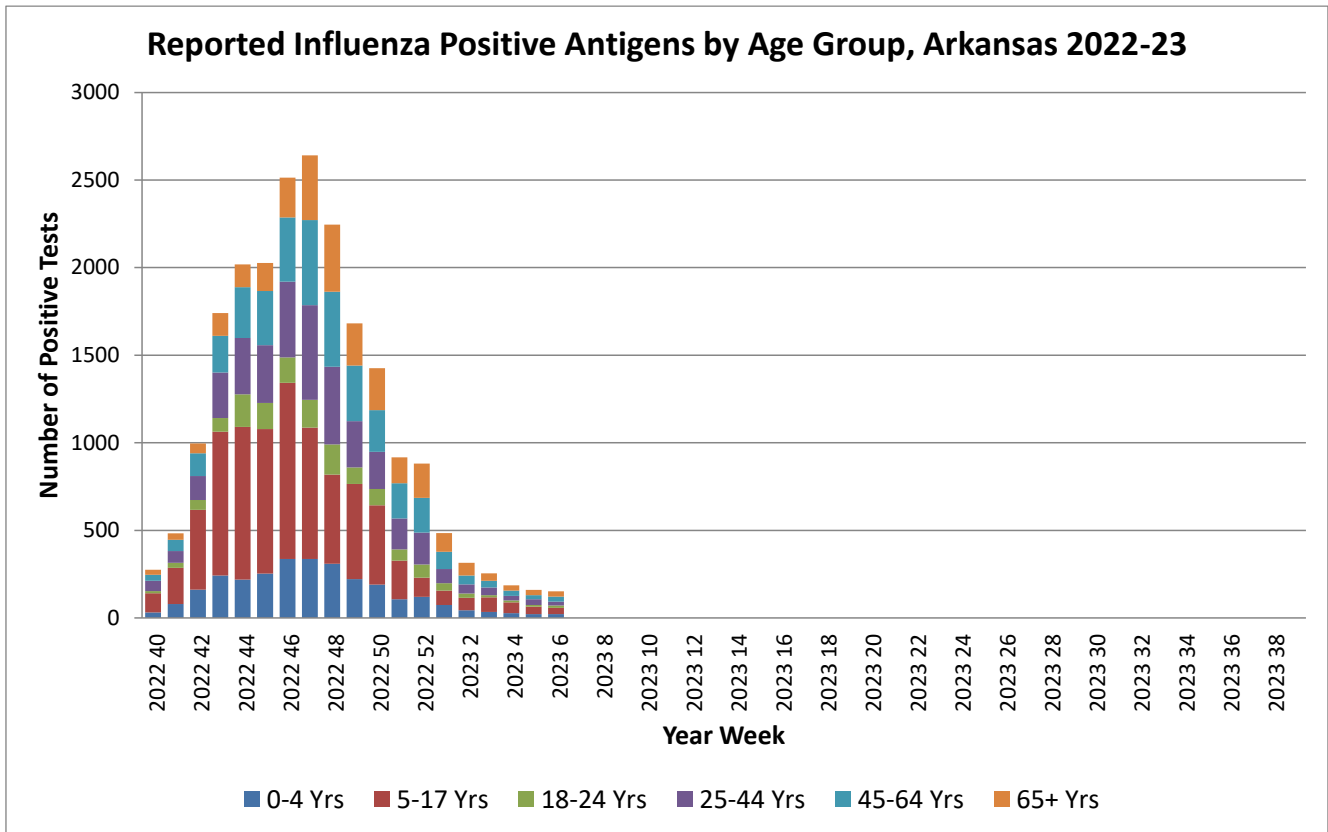
## Percentage of Outpatient Visits Due to Influenza-like Illness Reported by ILINet in Arkansas



# Weekly Influenza Claims Paid by Medicaid and BCBS of Arkansas

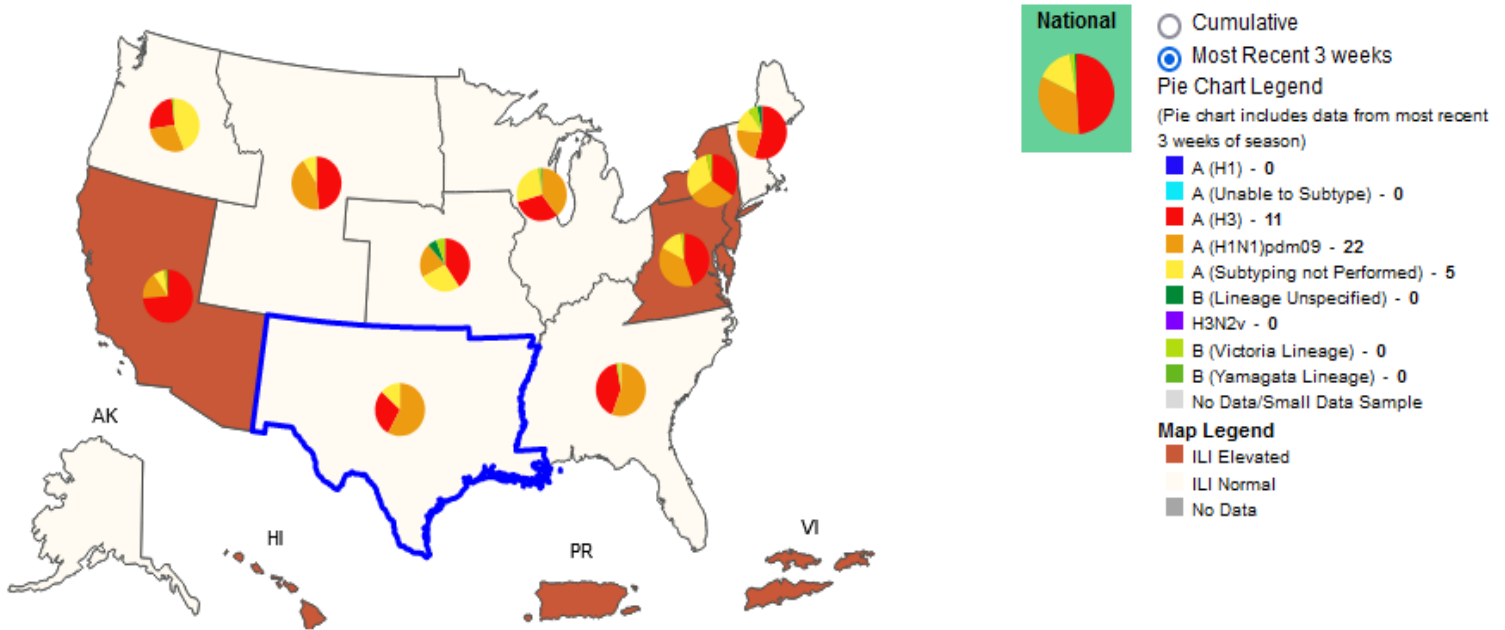


# Antigen Report

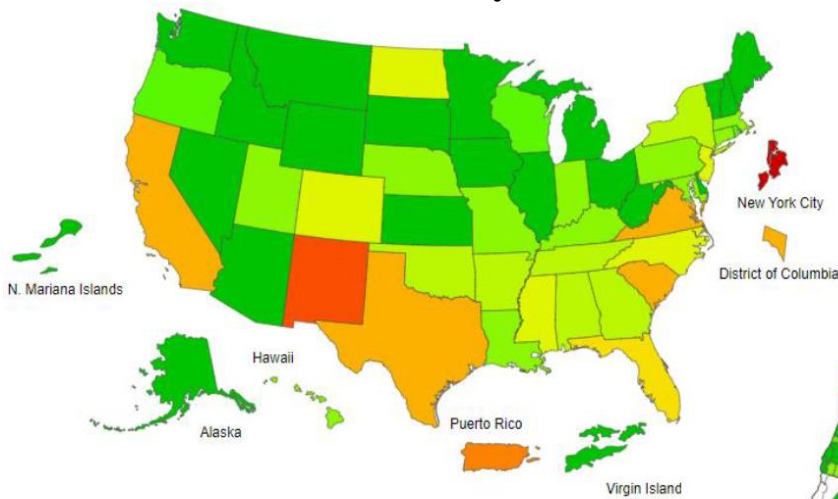


# Influenza Positive Tests Reported to CDC and ILI Activity, by HHS Region Public Health Labs, 2022-2023 Season, Week Ending February 4, 2023

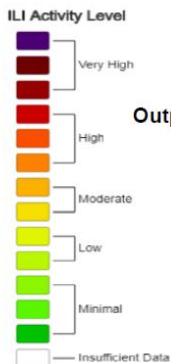
Values in legend are for the highlighted HHS region (Region 6) for the most recent 3 weeks



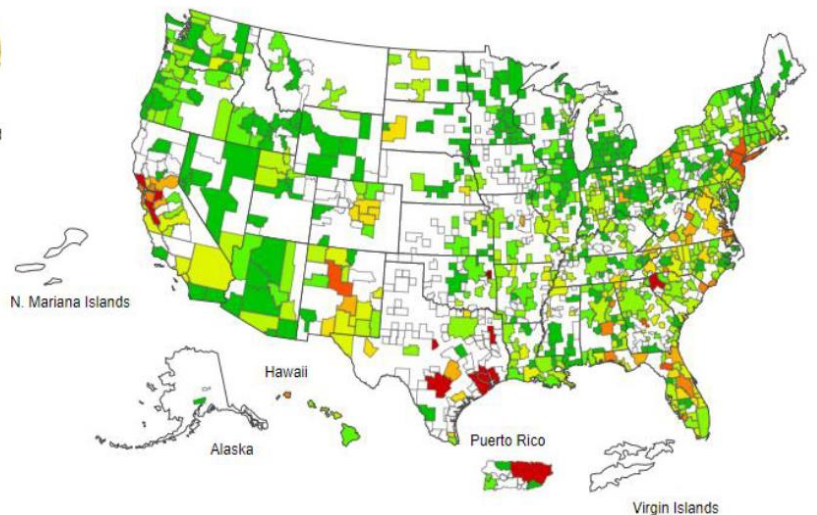
## Influenza-Like-Illness Activity Level Indicator Determined by Data Reported to ILINet



This system monitors visits for ILI (fever and cough or sore throat), not laboratory confirmed influenza and may capture patient visits due to other respiratory pathogens that cause similar symptoms.

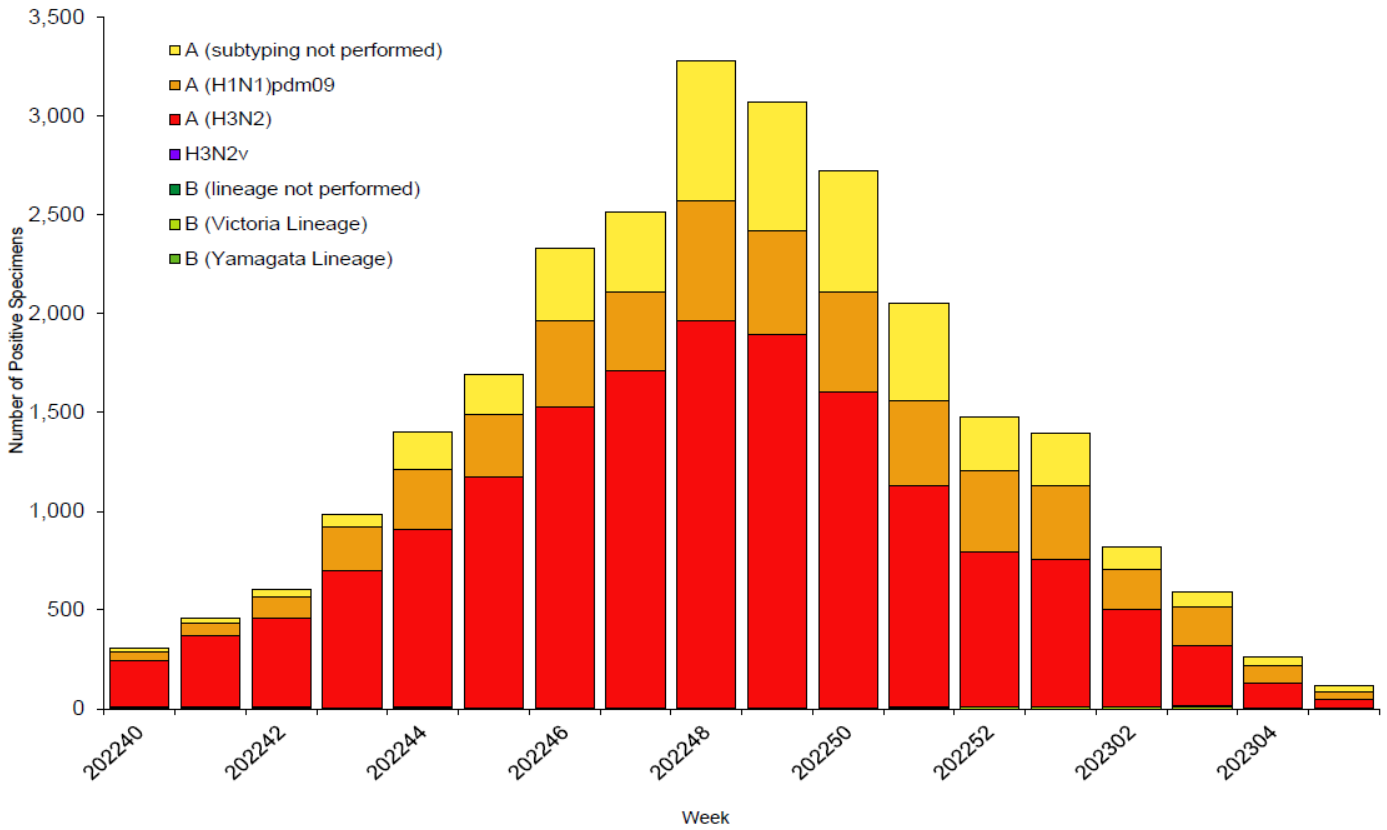


Outpatient Respiratory Illness Activity by CBSA  
Week 5, ending February 4, 2023

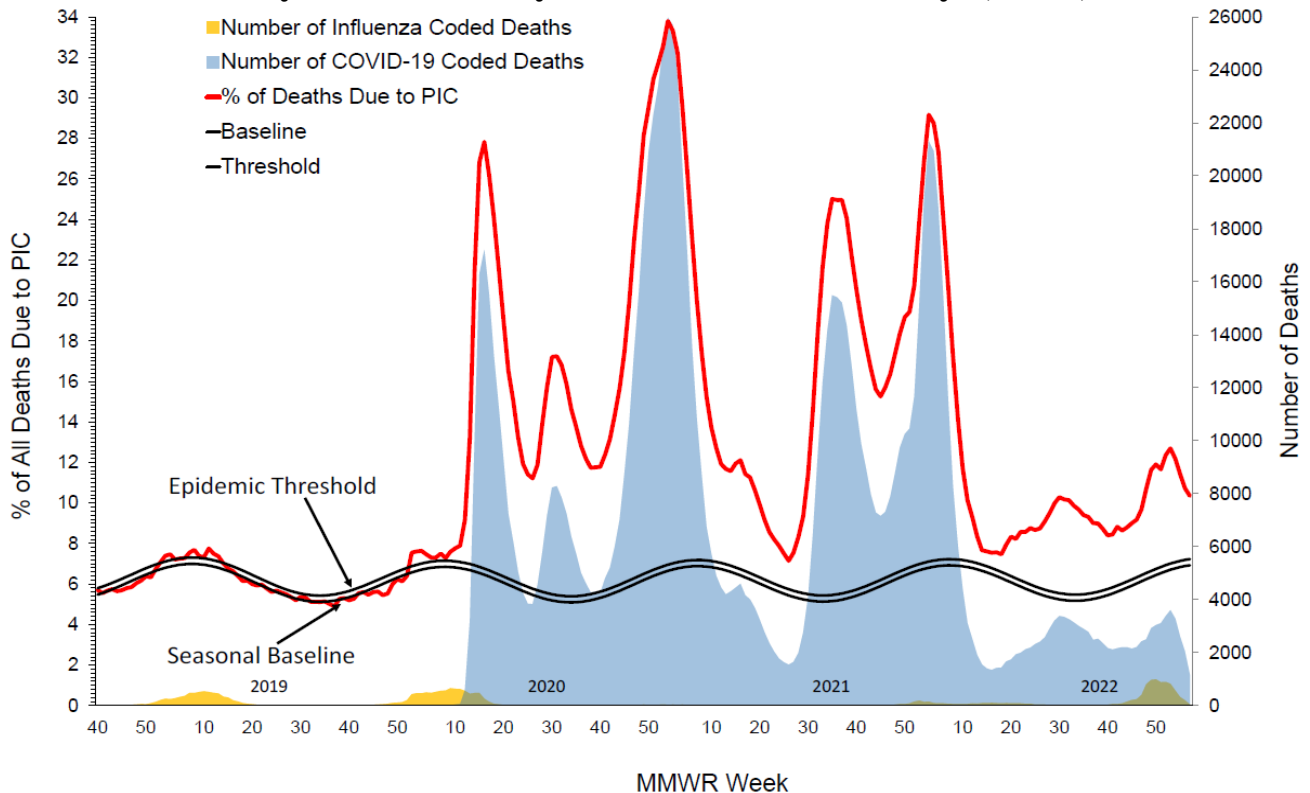




## Influenza Positive Tests Reported to CDC by U.S. Public Health Laboratories, National Summary, October 2, 2022 – February 4, 2023



## Pneumonia, Influenza and COVID Mortality from the National Center for Health Statistics Mortality Surveillance System Data as of February 9, 2023, National Data



## Percentage of All Deaths due to Pneumonia, Influenza, and COVID-19, as of February 9, 2023, Arkansas Data

