



ARKANSAS DEPARTMENT OF HEALTH

Nathaniel Smith, MD, MPH, Secretary of Health

Outbreak Response/Epidemiology Influenza Weekly Report Arkansas 2019-2020

Week Ending Saturday 04/11/2020

Jennifer Dillaha, MD,
State Epidemiologist; Medical Director, Immunizations/Outbreak Response

Shirley Louie, MS, CIH
Deputy State Epidemiologist; Director, Center for Public Health Practice

Prepared by:

Haytham Safi, MD, MPH
Influenza Surveillance Coordinator
Haytham.Safi@Arkansas.gov
501-661-2920

Reviewed by:

Lori Simmons, MS, Branch Chief, Epidemiology
Kellye McCartney, Branch Chief, Immunizations/Outbreak Control
Mike Cima, PhD, Chief Epidemiologist, Associate Director for Science, CHP

During flu season, the Arkansas Department of Health (ADH) produces a Weekly Influenza Report for clinicians. The report provides information on flu activity in the state. The report also compares influenza-like-illness (ILI) in Arkansas to activity in the U.S. ADH receives reports of only a fraction of flu cases since it only requires reports of hospitalizations, deaths, and outbreaks. Therefore, it is important to understand that the information in the weekly update is representative of the timing and location of activity, but it does not reflect the overall burden of disease. It is presumed that there are many more people actually affected than the report shows. Clinicians and policy makers may find the report helpful in terms of communicating to colleagues and patients about the current status of the flu season.

Report Key Points:

- For Week 15, Arkansas reported “Sporadic” activity to the Centers for Disease Control and Prevention (CDC) for geographic spread of influenza, and “Minimal” or 1 out of 10 for ILI intensity.
- Since September 29, 2019, 36,180 positive influenza tests have been reported to the ADH online database by health care providers, with 70 positive tests reported this week. **Please note that reported cases reflect only a portion of the actual numbers of flu cases in the state.**
- Among flu antigen tests this season that can distinguish between influenza A and B virus types, 53 percent were influenza A, and 47 percent were influenza B.
- There were 2 positive PCR flu tests from private labs this week, both tested positive for influenza B. At the ADH lab, no sample tested for flu this week.
- About 2.0 percent of patients visiting emergency rooms this week were there for ILI (Syndromic Surveillance). Less than 1.2 percent of outpatient visits were for ILI (ILINet sentinel providers).
- No school report this week due to school closures for COVID 19 starting March 17, 2020; prior, ADH was aware of 42 schools/districts that closed briefly due to the flu this season.
- There were no influenza related deaths in Arkansas reported this week. Arkansas reported a total of 118 influenza-related deaths including three pediatric deaths this season. CDC estimates a total of 24,000 flu deaths have occurred nationwide including 166 pediatric deaths reported this season.
- Since September 29, 2019, 12 facilities including 10 nursing homes have reported influenza outbreaks.
- Nationally, the proportion of deaths reported to the National Center for Health Statistics attributed to pneumonia and influenza (P&I) is above the epidemic threshold this week.
- For Week 14, the geographic spread of influenza was reported as widespread in 11 states, and regional in Puerto Rico and 19 states. The District of Columbia and 12 states reported local activity, the U.S. Virgin Islands and 7 states reported sporadic activity, 1 state reported no activity, and Guam did not report.
- You can report flu year-round and view the weekly influenza report during the influenza season at: <http://www.healthy.arkansas.gov/programs-services/topics/influenza>. You can also access the reporting website directly at: <https://FluReport.ADH.Arkansas.gov>.

For Additional National and International Influenza Surveillance Information:

World Health Organization (WHO): http://www.who.int/influenza/gisrs_laboratory/flunet/en/index.html.

CDC - Seasonal Influenza (Flu) - Weekly Report: <http://www.cdc.gov/flu/weekly/>

2019-2020 Influenza Outbreak Response/Epi Report (Week 15: 04/05/2020 – 04/11/2020)

Death Report for Week 15

- Deaths from all causes: 575
- Deaths due to Pneumonia: 54
- PCR confirmed Flu Deaths: 0
- Death Certificate or Flu Antigen only: 0

Cumulative Flu Deaths since 09/29/2019

- PCR confirmed Flu deaths: 20
- Death Certificate or Antigen only: 98
- Cumulative Flu deaths: 118

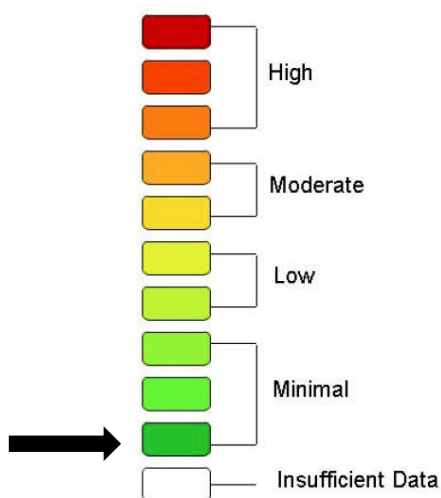
ER Visits (Syndromic Surveillance)

- **Week Ending: 04/11/2020**
Weighted Average: 2.0%
– Total Visits: 12,673
– Visits with ILI: 253
- **Previous Week**
Weighted Average: 2.5%
– Total Visits: 12,595
– Visits with ILI: 311

Total Flu-Related Hospital Admissions

- **PCR Confirmed:**
– Cumulative: 508
– Week ending 04/11/2020: 0
- **Antigen Positive:**
– Cumulative: 817
– Week ending 04/11/2020: 2

Weekly Arkansas ILI Intensity Level Reported by Sentinel Providers



PCR Lab Confirmed Influenza Cases

- Total Cases since 09/29/2019: 6,820
- Week ending 04/11/2020: 2

Reported cases reflect only a portion of the actual numbers of flu cases in the state.

PCR Tests	ADH Lab Week 15	Other Labs Week 15	Cumulative Cases Since 09/29/2019
A+	0	0	3,322
B+	0	2	3,336
Both A and B	0	0	40
B/Victoria	0	0	45
B/ Yamagata	0	0	0
H1N1+	0	0	76
H3+	0	0	1
Unsubtypeable	0	0	0
Total	0	2	6,820
Negative	0	--	--

PCR Confirmed Influenza Cases since 09/29/2019

Age Groups	PCR+	Hospitalized	Deaths
0-4 yr.	1,247	21	2
5-17 yr.	2,958	9	0
18-24 yr.	328	20	1
25-44 yr.	957	56	3
45-64 yr.	798	170	8
>= 65 yr.	505	232	6
Unknown	27	0	0
Total	6,820	508	20

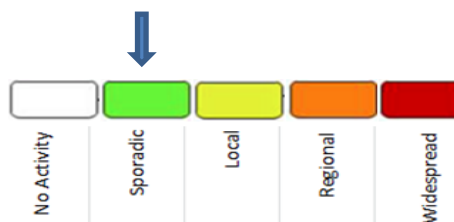
School Absenteeism*

Week Ending: 04/11/2020

- Percent Absent: No report -- school closing
- Previous Week: No report -- school closing

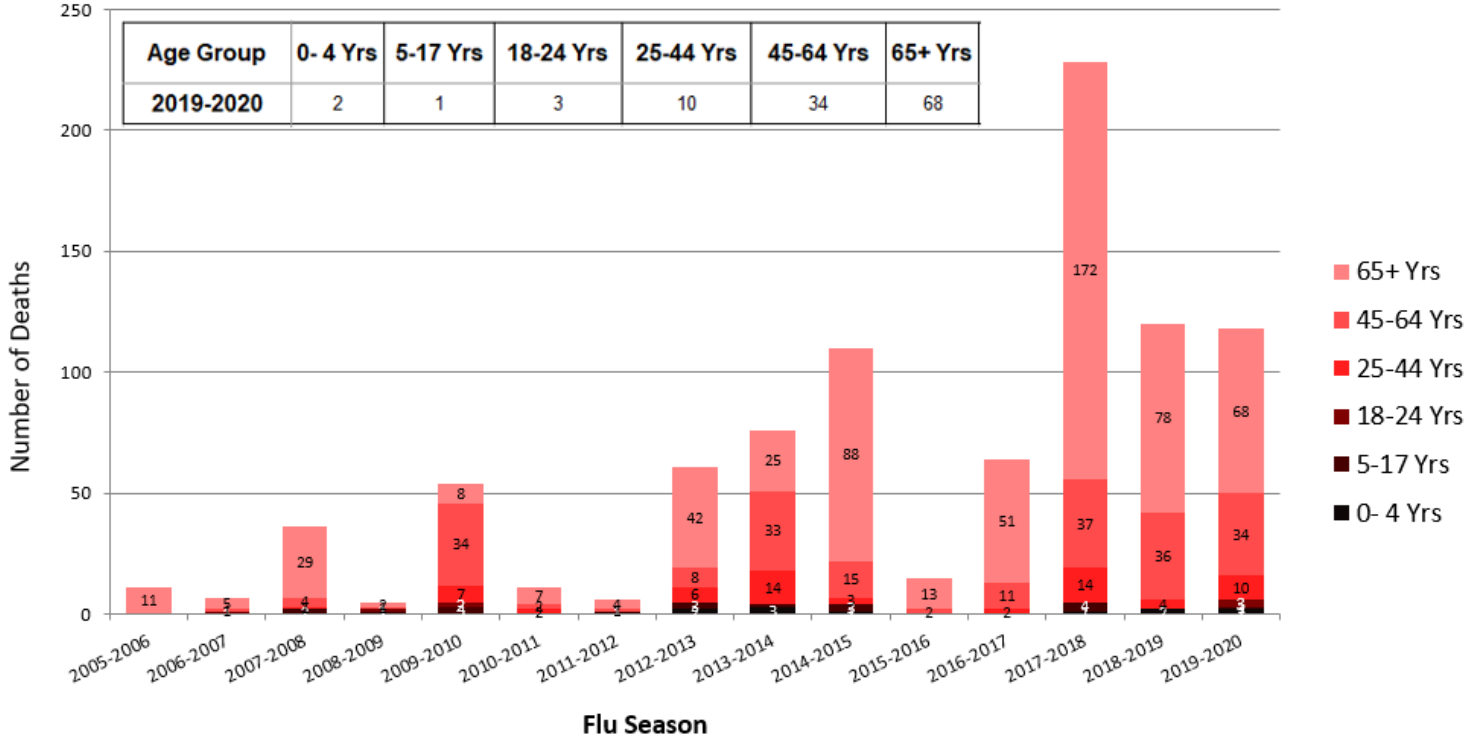
* Average daily absenteeism for all public schools during this reporting week.

Geographic ILI Activity Level Reported for Week 15:



Influenza Mortality by Age Group, Arkansas 2005-2020 (Provisional)

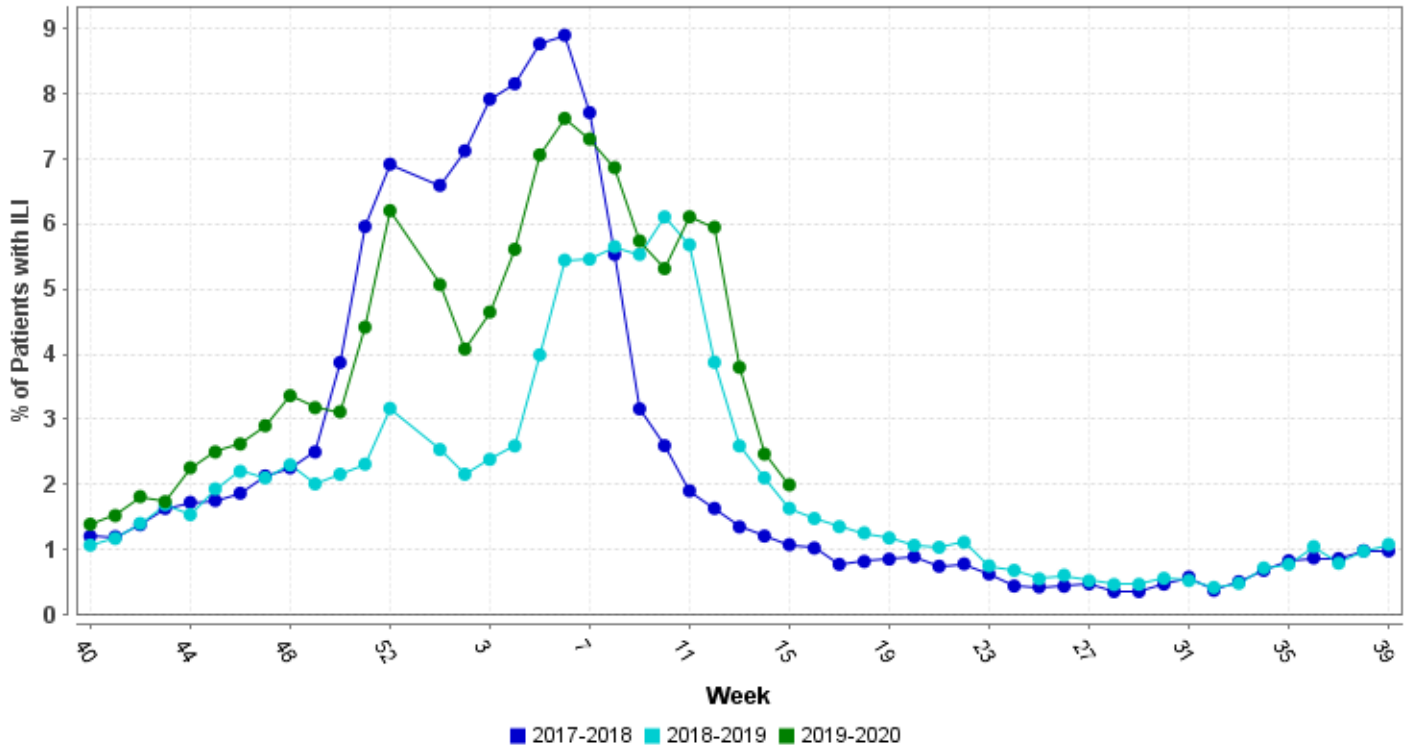
Report Updated: 4/14/2020



* All seasons range from week 40 to week 39 except 2009-2010 started week 36
 Source: ADH Outbreak Response Section, and Center for Health Statistics

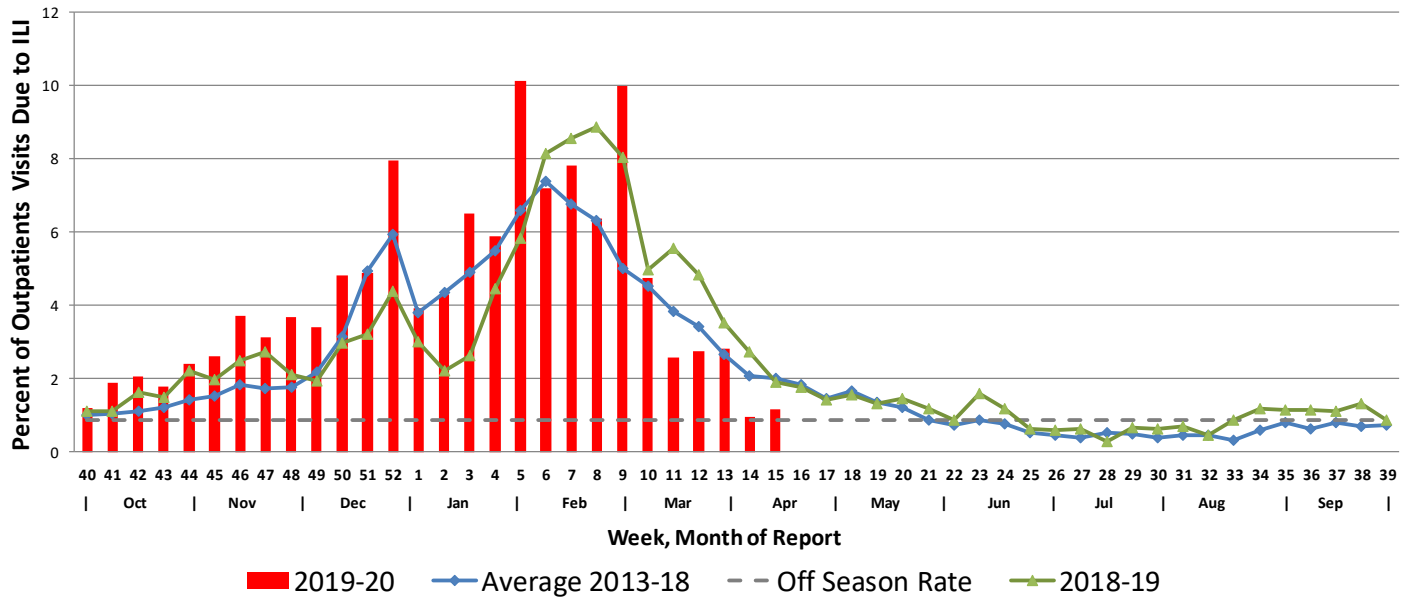
Hospital Report – Downloaded from ESSENCE (Syndromic Surveillance)

Percent ER Visits with ILI

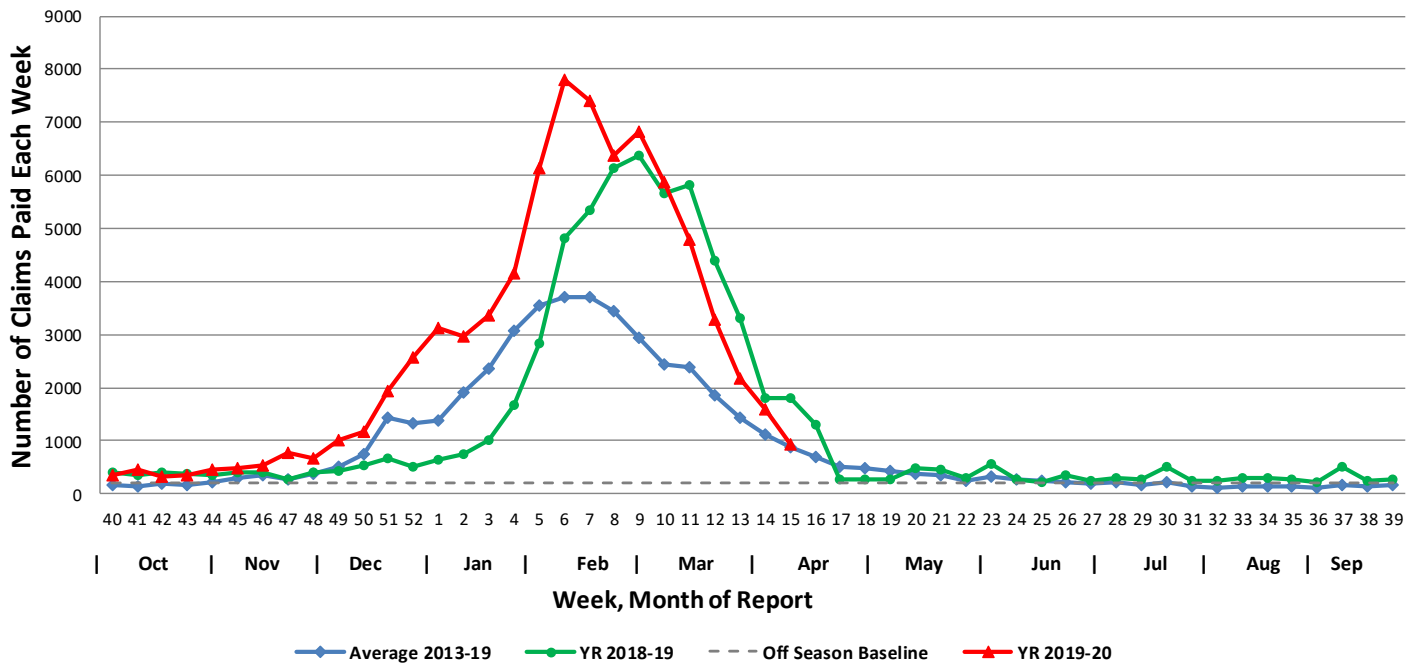


Arkansas Subset of US Outpatients Influenza Surveillance (ILINET)

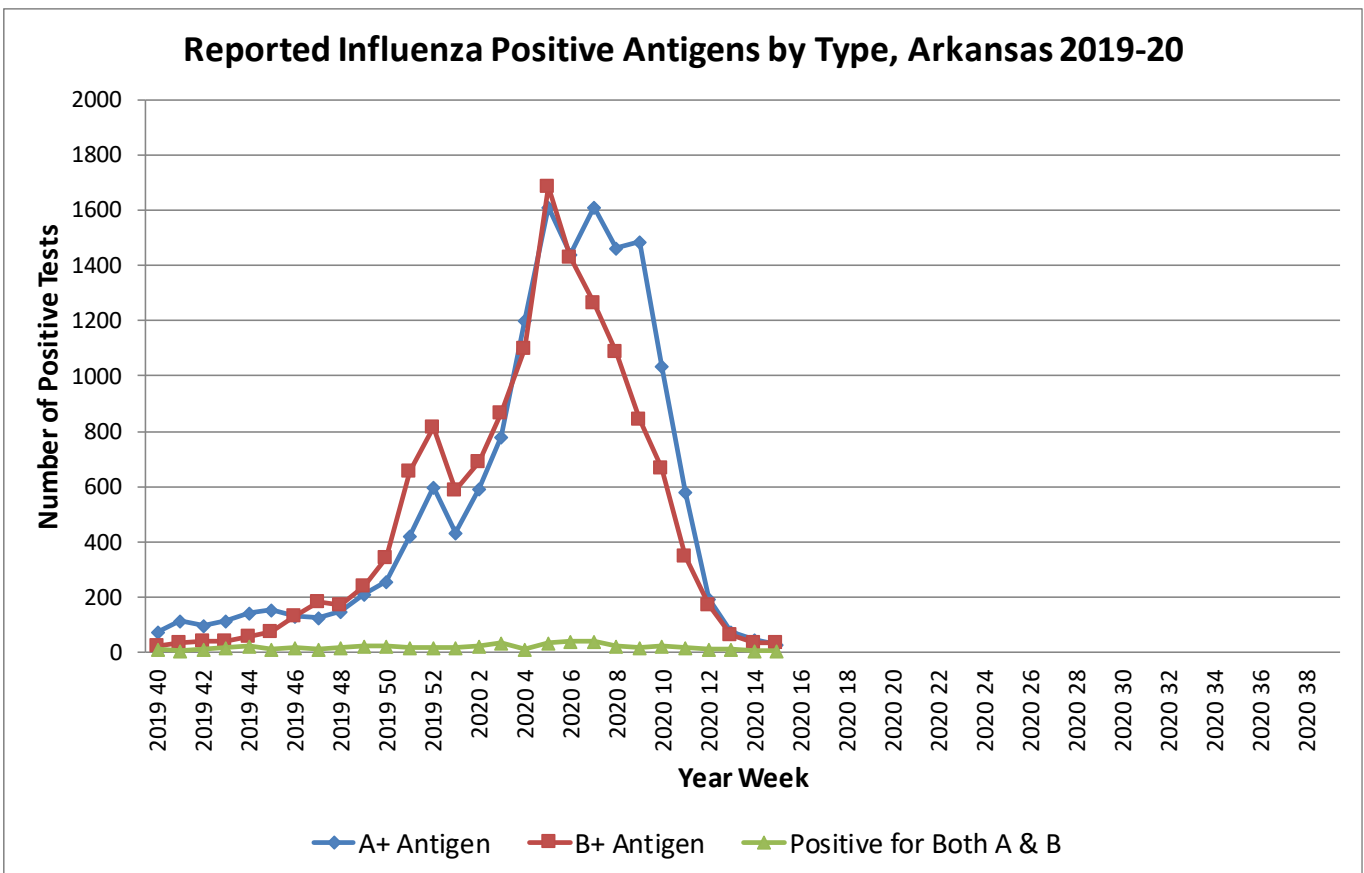
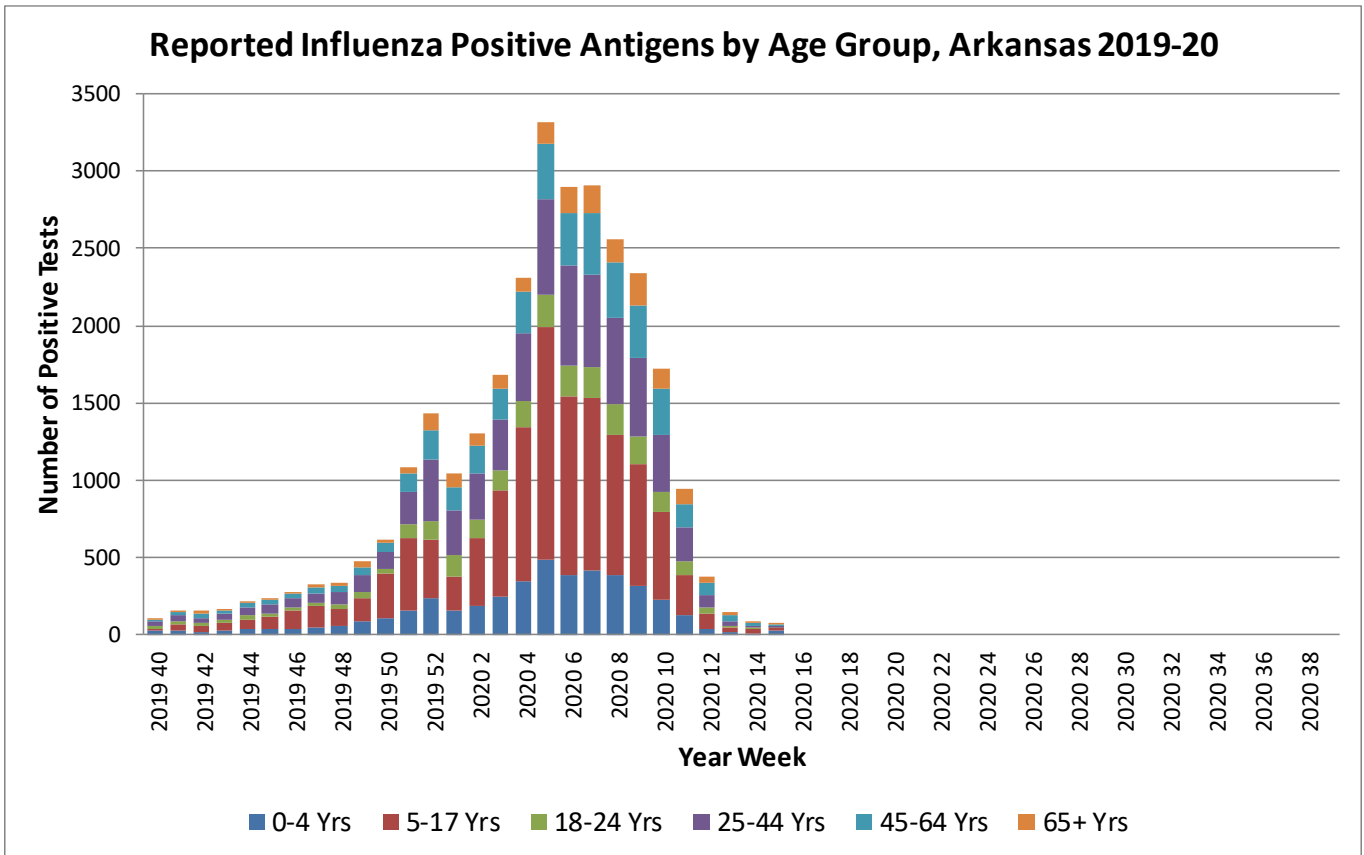
Percentage of Outpatient Visits Due to Influenza-like Illness Reported by ILINET in Arkansas



Weekly Influenza Claims Paid by Medicaid and BCBS of Arkansas

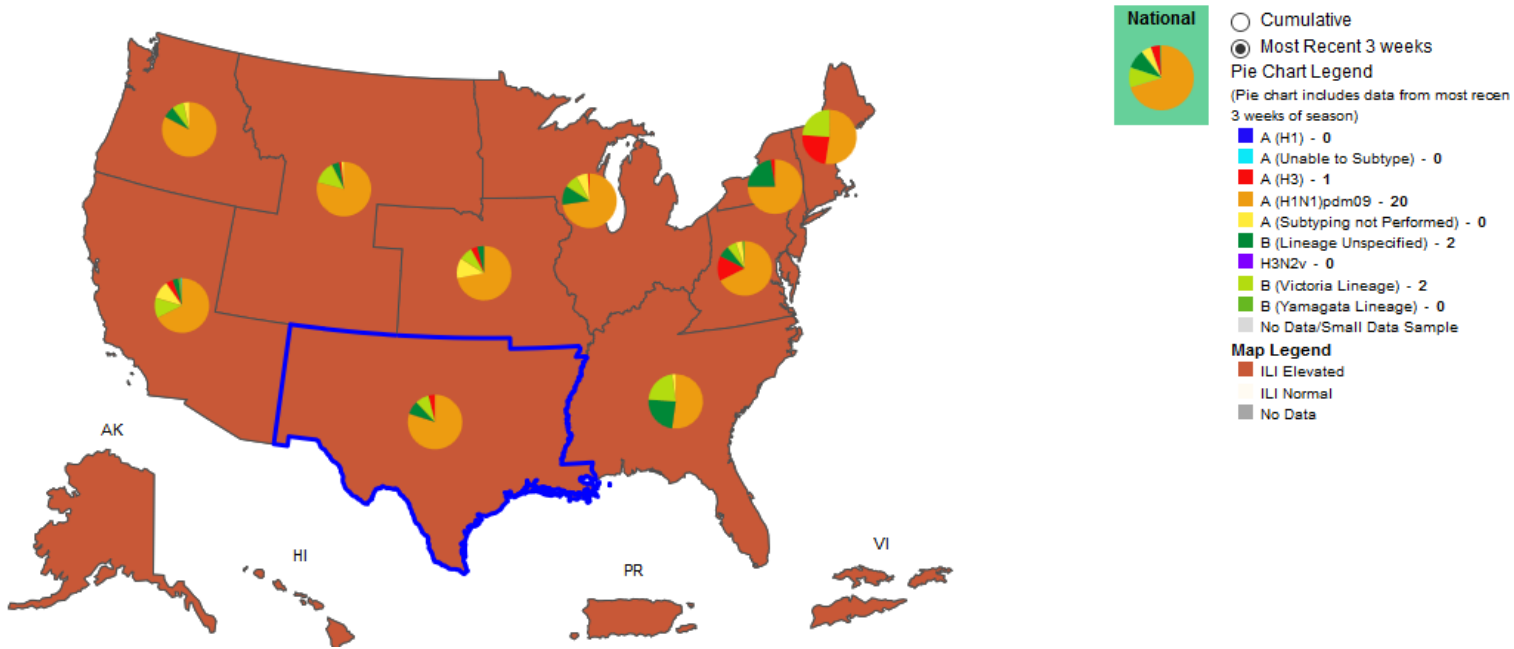


Antigen Report



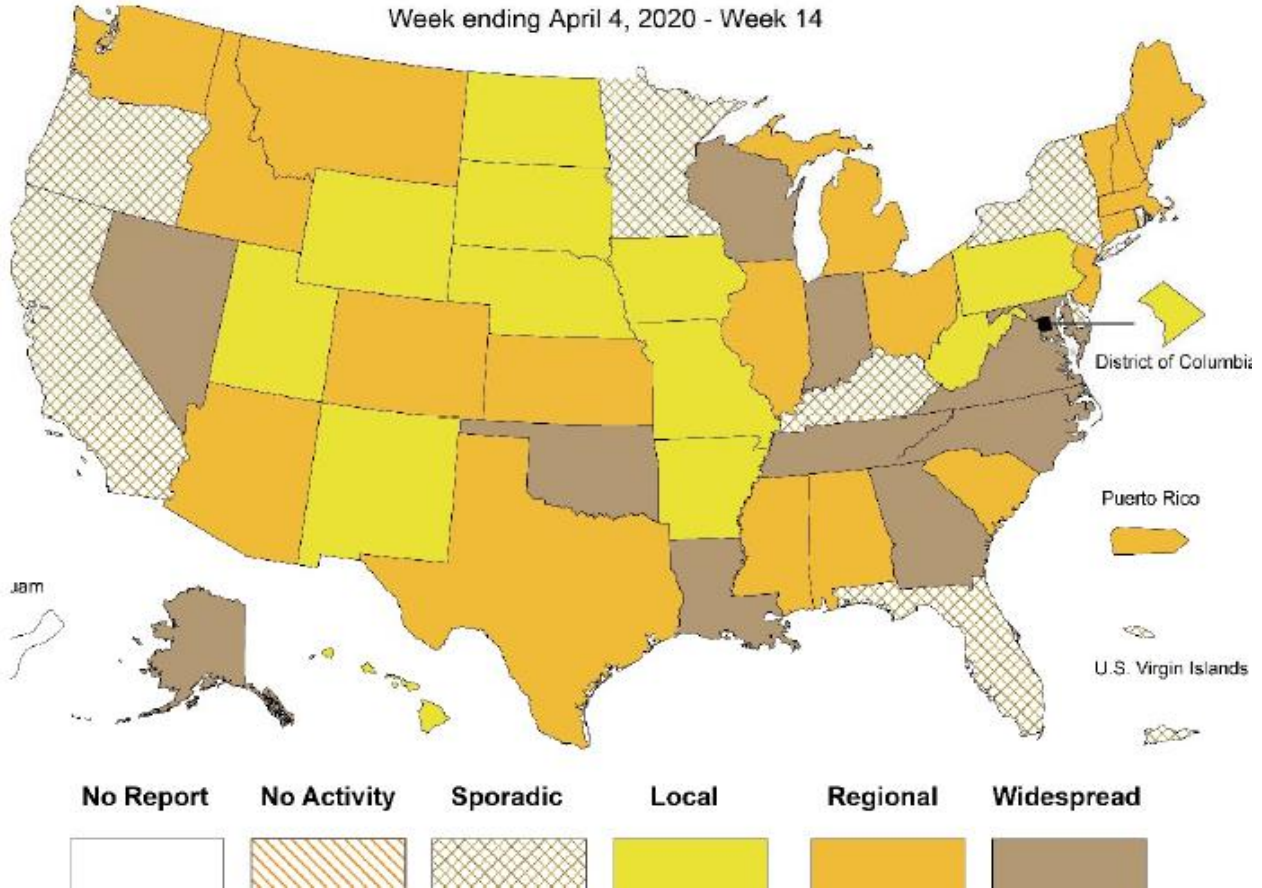
Influenza Positive Tests Reported to CDC and ILI Activity, by HHS Region, 2018-2019 Season, Week Ending April 4, 2020

Values in legend are for the highlighted HHS region (Region 6)



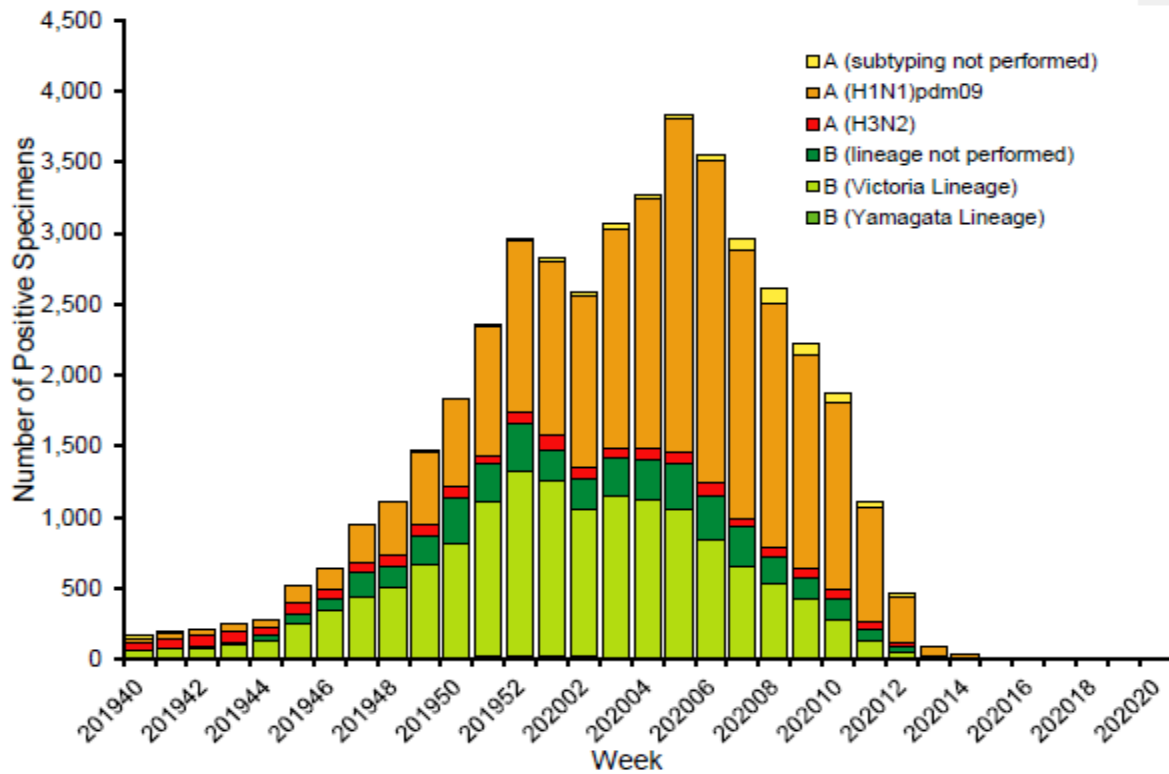
Weekly Influenza Activity Estimates Reported by State and Territorial Epidemiologists

Week ending April 4, 2020 - Week 14



Arkansas Flu Activity Level Reported for Week 15: Sporadic

Influenza Positive Tests Reported to CDC by U.S. Public Health Laboratories, National Summary, 2019-2020 Season



Pneumonia and Influenza Mortality from the National Center for Health
Statistics Mortality Surveillance System Data through the week
ending March 28, 2020, as of April 9, 2020

