



# ARKANSAS DEPARTMENT OF HEALTH

**Renee Mallory, RN, BSN**  
Secretary of Health

**Jennifer Dillaha, MD**  
Director

## Viral Respiratory Diseases Weekly Report 2023-2024

---

**Week Ending Saturday 10/28/2023**

---

**Mike Cima, PhD**  
State Epidemiologist

**Austin Porter III, DrPH, MPH**  
Deputy Chief Science Officer  
Deputy State Epidemiologist

**Prepared by:**

**Haytham Safi, MD, MPH**  
Epidemiology Supervisor  
Influenza Surveillance Coordinator  
[Haytham.Safi@Arkansas.gov](mailto:Haytham.Safi@Arkansas.gov)  
501-661-2920

**Reviewed by:**

**Lori Simmons, MS**  
Branch Chief, Epidemiology

**November 1, 2023**

The Arkansas Department of Health (ADH) produces a Weekly Viral Respiratory Diseases Report for clinicians. The report provides information on Influenza, COVID-19 and Respiratory Syncytial Virus (RSV) activity in the state. The report also compares activities in Arkansas to the U.S. ADH receives reports of only a fraction of COVID-19 cases and flu cases since it only requires reports of flu hospitalizations, deaths, and outbreaks. RSV is not a reportable disease in Arkansas. Therefore, it is important to understand that the information in the weekly update is representative of the timing and location of activity, but it does not reflect the overall disease burden. It is presumed that there are many more people actually affected than the report shows. Clinicians and policymakers may find the report helpful in terms of communicating to colleagues and patients about the current status of viral respiratory diseases in the state and nationwide.

### **Report Key Points for Week 43:**

- Arkansas reported “Minimal” or 3 out of 13 for the Influenza-Like-Illness (ILI) activity level indicator determined by data reported to ILINet.
- Hospital Emergency Department visits reported through Syndromic Surveillance were at 2.25% for Influenza-Like-Illness (ILI), 2.24% for COVID-Like-Illness (CLI), and 0.49% for Respiratory Syncytial Virus (RSV).
- Outpatient visits for ILI reported through ILINet from the Sentinel Providers were at 2.09%.
- Arkansas reported 1 influenza-related death in the 2023-24 flu season.
- Arkansas reported no COVID-19-related deaths this week and 478 deaths since 01/01/2023.
- This flu season, 1 influenza outbreak has been reported from nursing homes or other congregate setting institutions.
- The school’s absenteeism report should be available soon.
- Nationally, the proportion of deaths reported to the National Center for Health Statistics that were attributed to pneumonia and influenza (P&I) was above the epidemic threshold this week.

You can report flu year-round and view the weekly Viral Respiratory Disease Weekly Report during the influenza season at: <http://www.healthy.arkansas.gov/programs-services/topics/influenza>. You can also access the reporting website directly at: <https://FluReport.ADH.Arkansas.gov>.

**For more info on COVID-19, please visit the ADH Data Hub at the ADH website: [ADH Data Hub - Covid-19](#)**

**For Additional National and International Influenza Surveillance Information:**

**World Health Organization (WHO): <https://www.who.int/tools/flunet>**

**CDC - Seasonal Influenza (Flu) - Weekly Report: <http://www.cdc.gov/flu/weekly/>**

# 2023-2024 Viral Respiratory Diseases Weekly Report (Week 43: 10/22/2023 – 10/28/2023)

## Deaths Reported for Week 43\*

\* Deaths reflect week reported not date of death.

- Deaths from all causes: 708
- Deaths due to Pneumonia: 46
- Deaths due to Flu: 1
- COVID-19 Related Deaths: 0

## Cumulative Deaths

- Total Flu deaths since 10/01/23: 1
- Total COVID deaths since 01/01/23: 478

## New Hospital Admissions

- Flu Week ending 10/28/2023: 4
- COVID Week ending 10/28/2023: 13

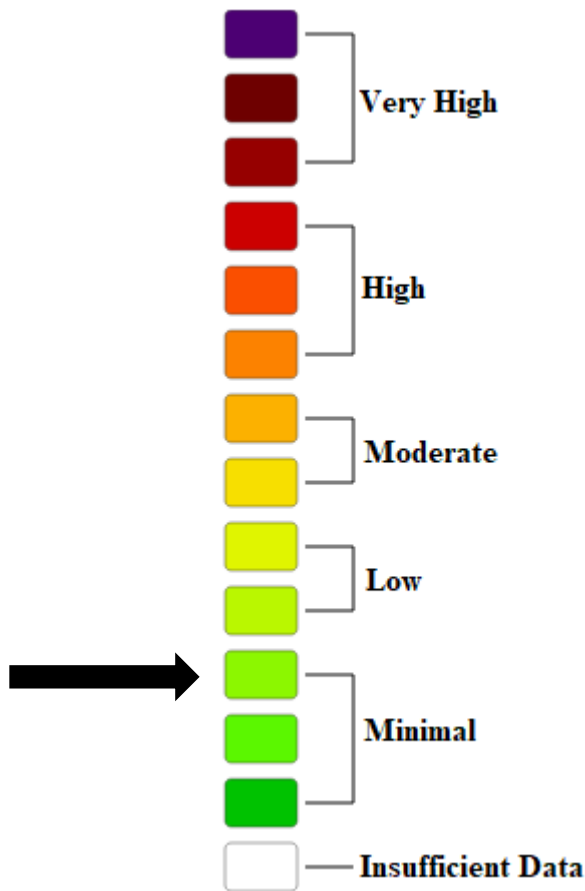
## School Absenteeism\*

\*Average daily absenteeism for all public schools during this reporting week.

Week Ending: 10/28/2023

- Percent Absent: No Report
- Previous Week: No Report

## Weekly Arkansas ILI Intensity Level Reported by Sentinel Providers



## Lab Confirmed Influenza Cases

Reported flu cases reflect only a portion of the actual numbers of flu cases in the state.

Tests	Week 43	Cumulative Cases Since 10/01/2023
Flu A+	21	94
Flu B+	47	181
Flu A and B	1	5
Flu B/Victoria	0	0
Flu B/ Yamagata	0	0
Flu A, H1N1+	1	1
Flu A, H3+	0	0
Unsubtypeable	0	0
<b>Total</b>	<b>70</b>	<b>281</b>

## Influenza Reported Cases, Hospitalization and Death Cumulative Cases Since 10/01/2023

Age Groups	Cases	Hospitalized	Deaths
0-4 yr.	38	2	0
5-17 yr.	80	4	0
18-24 yr.	10	2	0
25-44 yr.	56	3	0
45-64 yr.	33	1	0
>= 65 yr.	64	19	1
<b>Unknown</b>	<b>0</b>	<b>0</b>	<b>0</b>
<b>Total</b>	<b>281</b>	<b>31</b>	<b>1</b>

## ER Visits (Syndromic Surveillance)

### Week Ending: 10/28/2023:

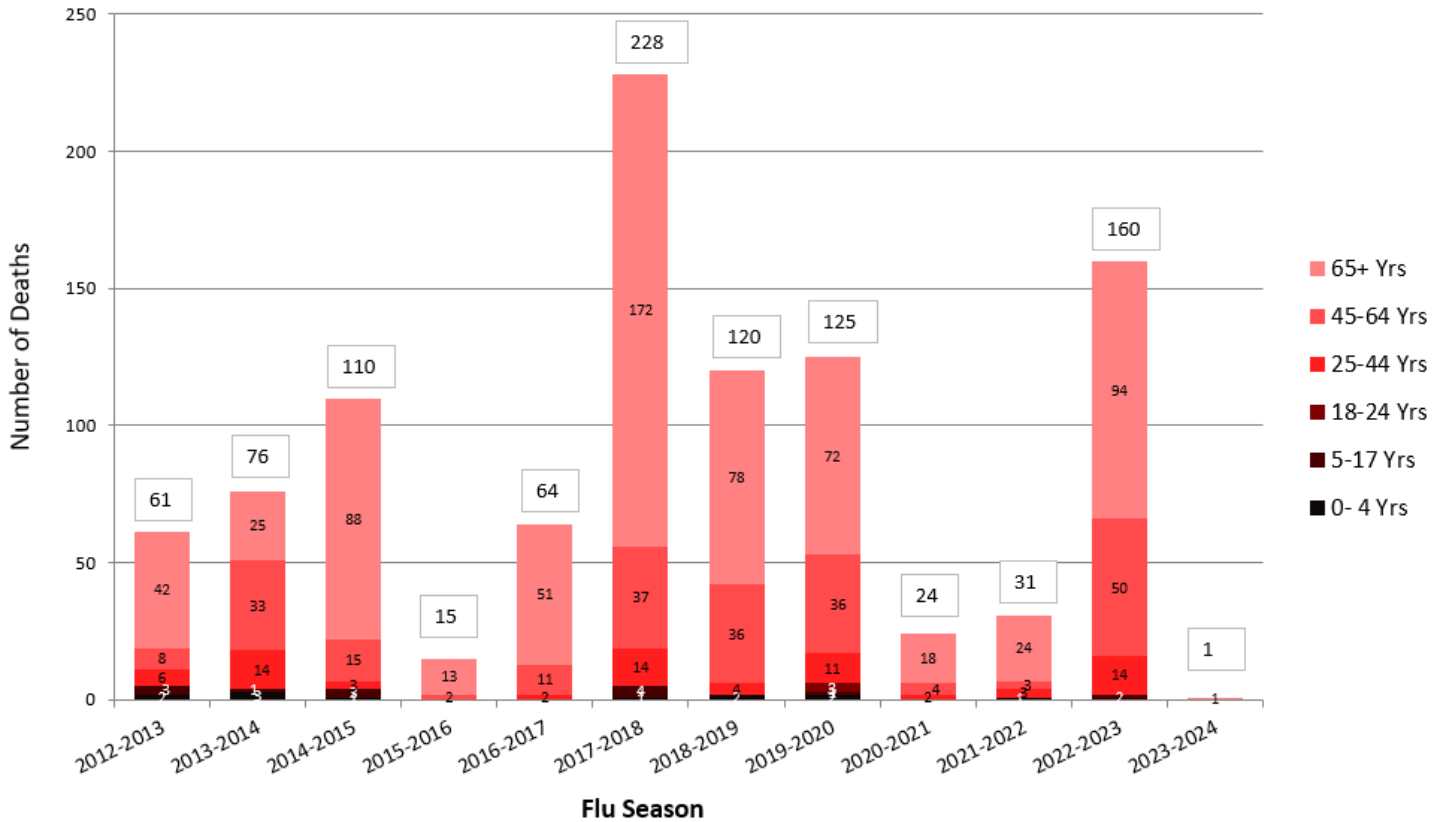
- Total (% of Visits)
- Total ER Visits: 16,471
  - Visits with ILI: 371 (2.25%)
  - Visits with CLI: 369 (2.24%)
  - Visits with RSV: 80 (0.49%)

### Previous Week:

- Total (% of Visits)
- Total ER Visits: 15,518
  - Visits with ILI: 384 (2.47%)
  - Visits with CLI: 367 (2.36%)
  - Visits with RSV: 49 (0.32%)

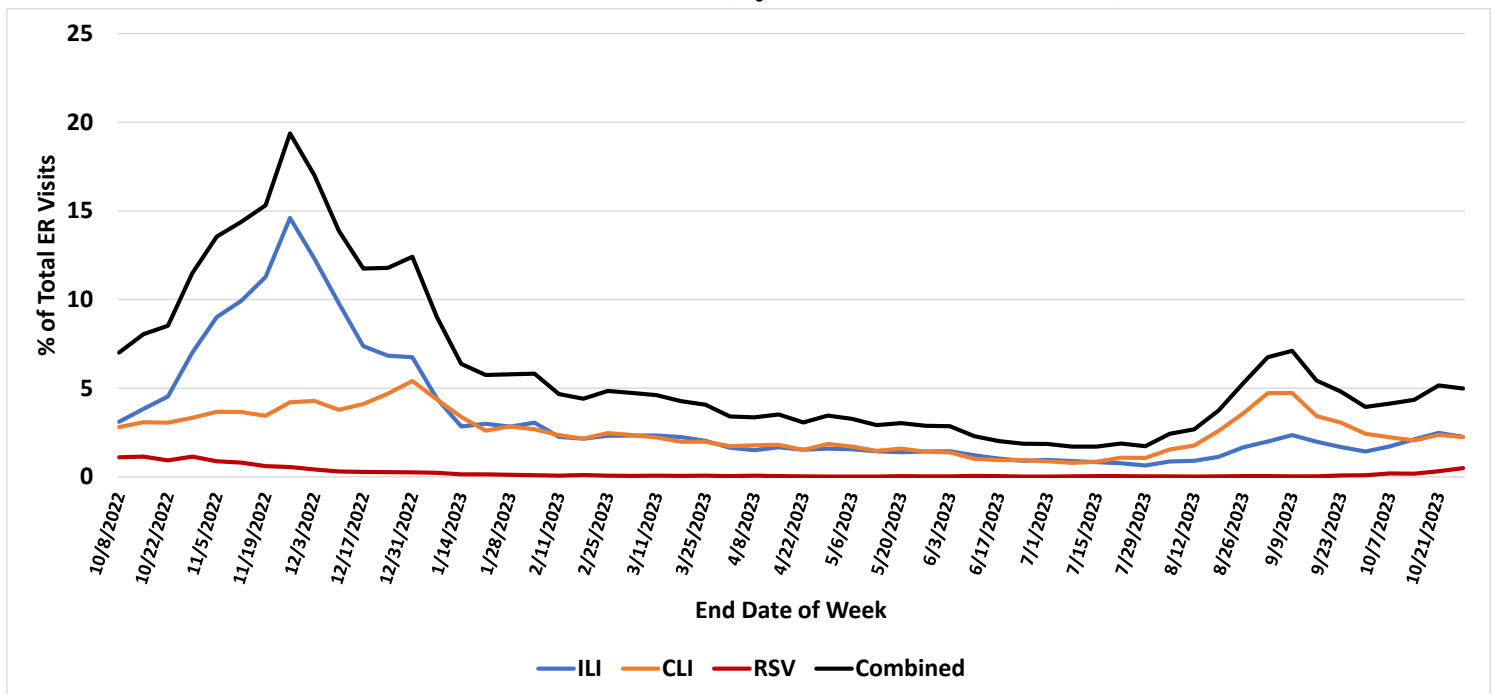
## Influenza Mortality by Age Group, Arkansas 2012-2024 (Provisional)

Report Updated: 10/31/2023



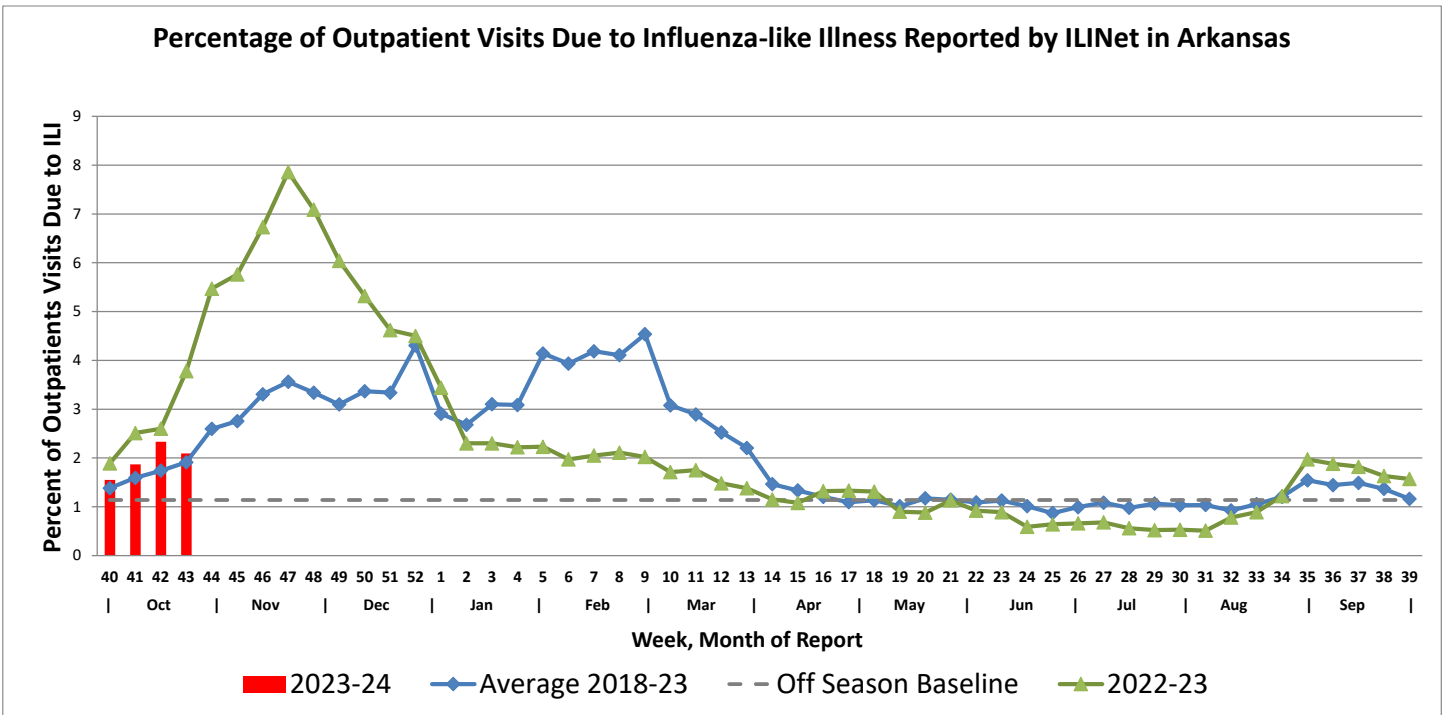
## Emergency Department Visits for ILI, CLI and RSV, Arkansas Data

Downloaded from NSSP (Syndromic Surveillance)

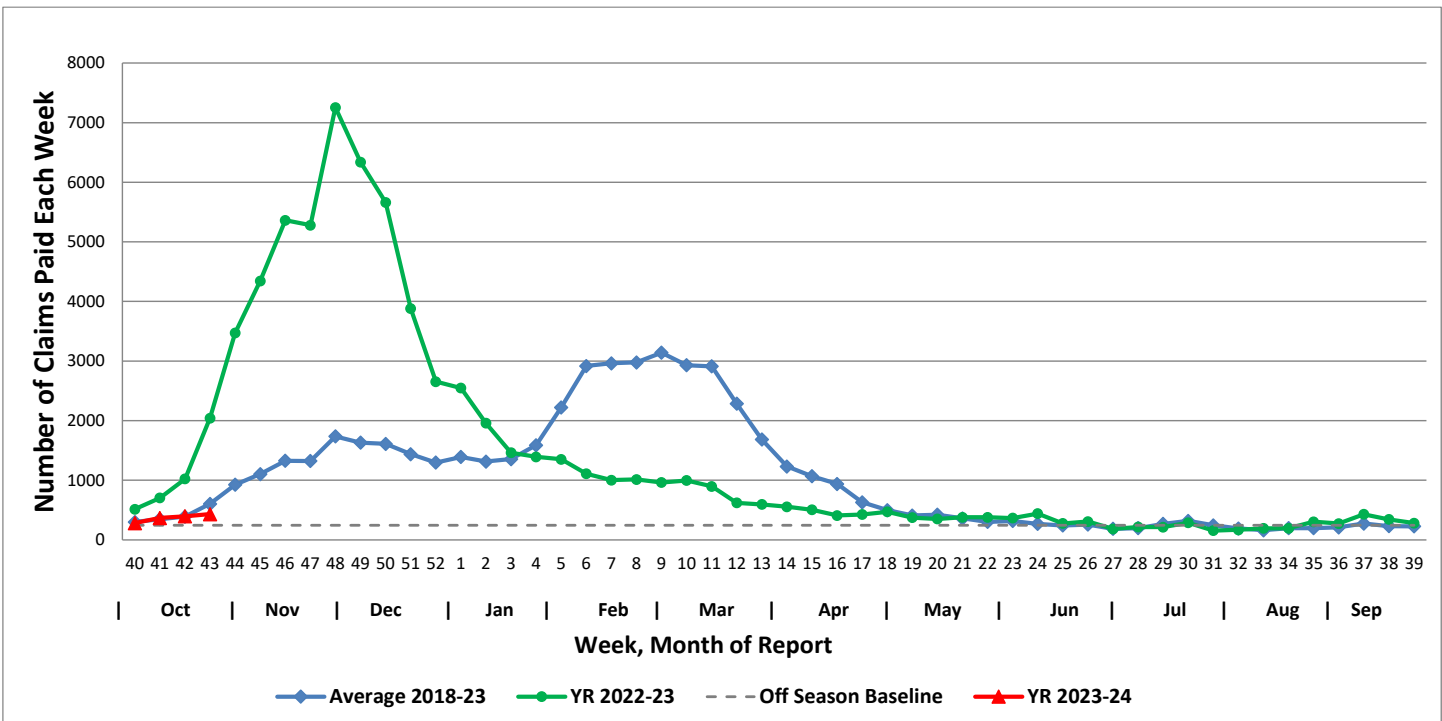


# Arkansas Subset of US Outpatient Influenza Surveillance (ILINET)

## Percentage of Outpatient Visits Due to Influenza-like Illness Reported by ILINet in Arkansas

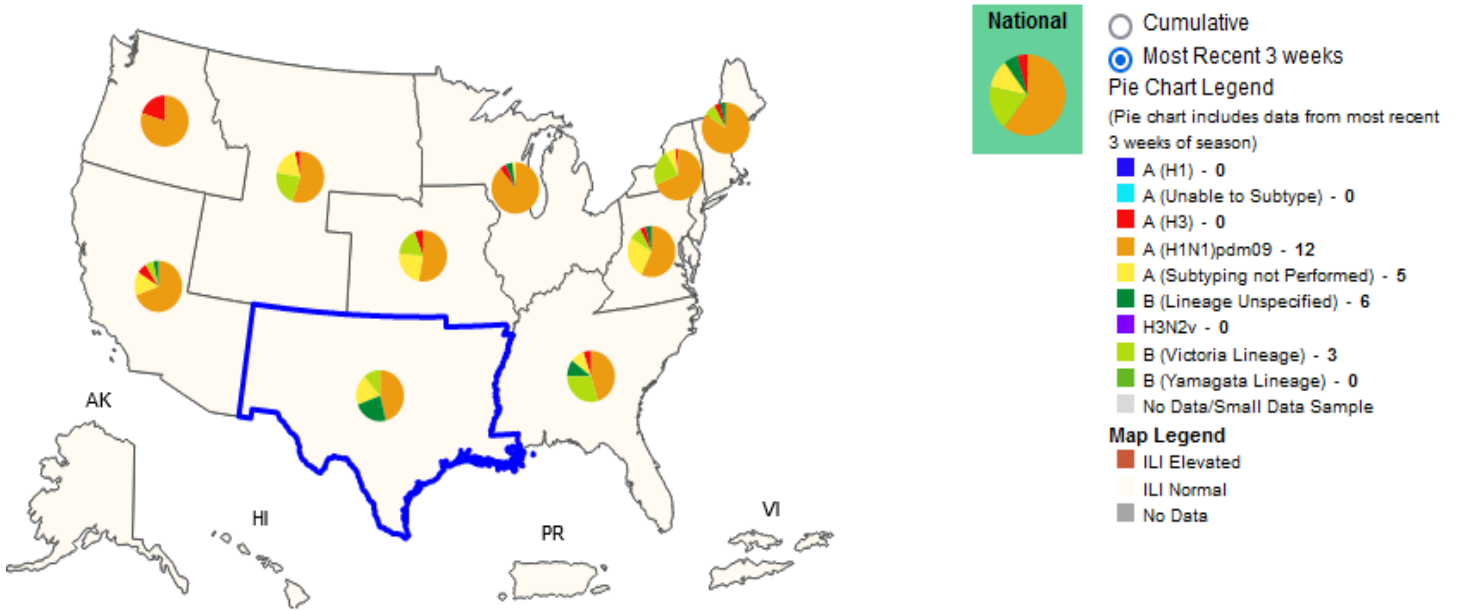


# Weekly Influenza Claims Paid by Medicaid and BCBS of Arkansas

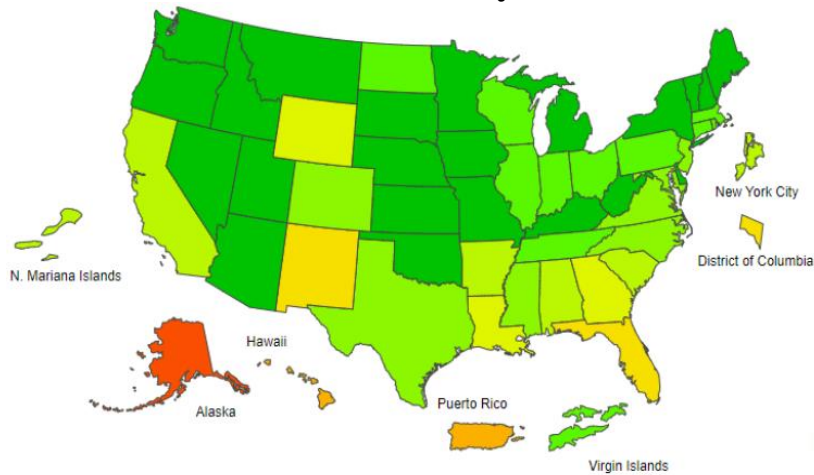


# Influenza Positive Tests Reported to CDC and ILI Activity, by HHS Region Public Health Labs, 2022-2023 Season, Week Ending Oct 21, 2023

Values in legend are for the highlighted HHS region (Region 6) for the most recent 3 weeks.

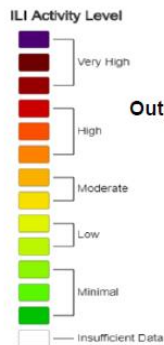


## Influenza-Like-Illness Activity Level Indicator Determined by Data Reported to ILINet

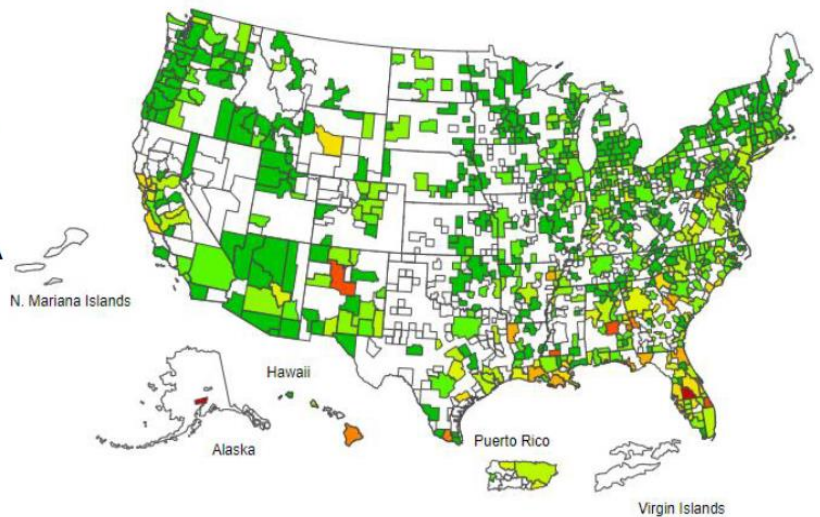


Outpatient Respiratory Illness Activity by Jurisdiction  
 Week 42, ending October 21, 2023

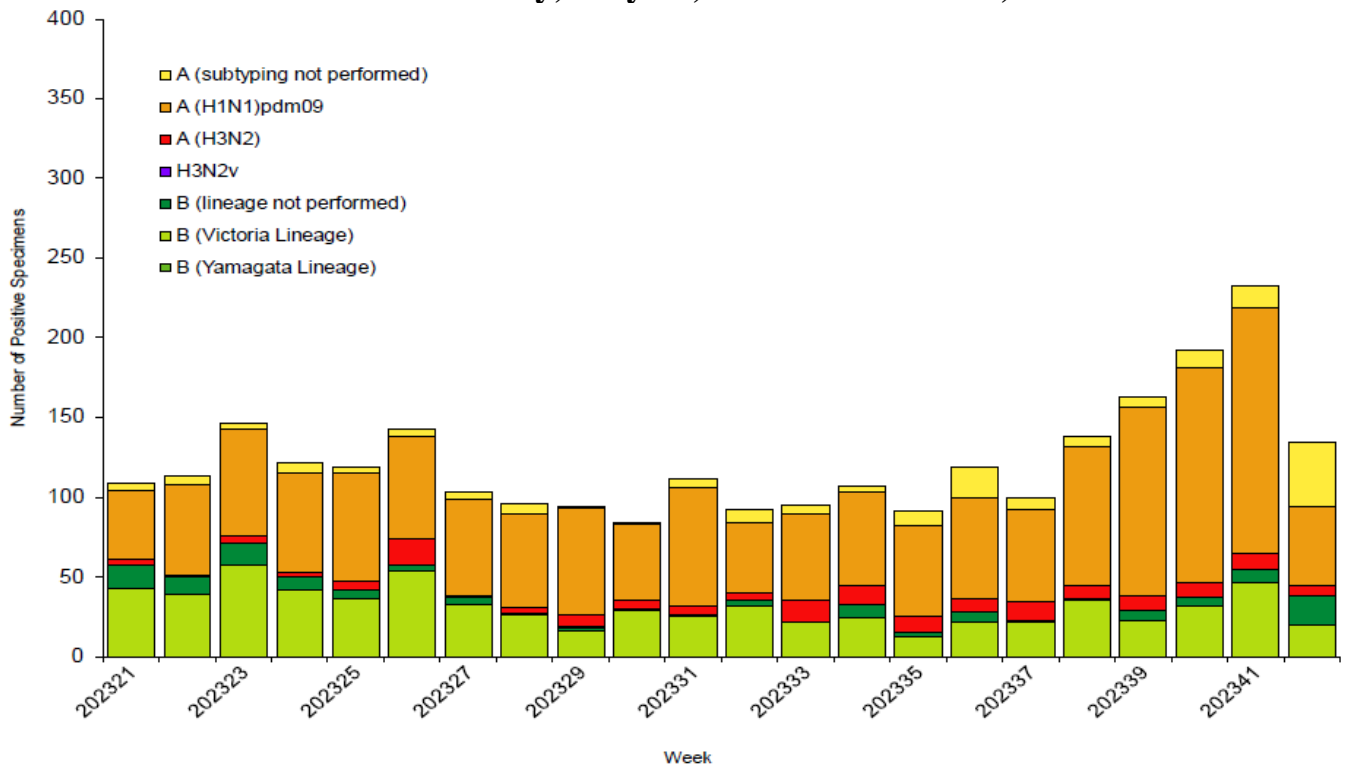
This system monitors visits for ILI (fever and cough or sore throat), not laboratory confirmed respiratory viruses and may capture patient visits due to other respiratory pathogens that cause similar symptoms.



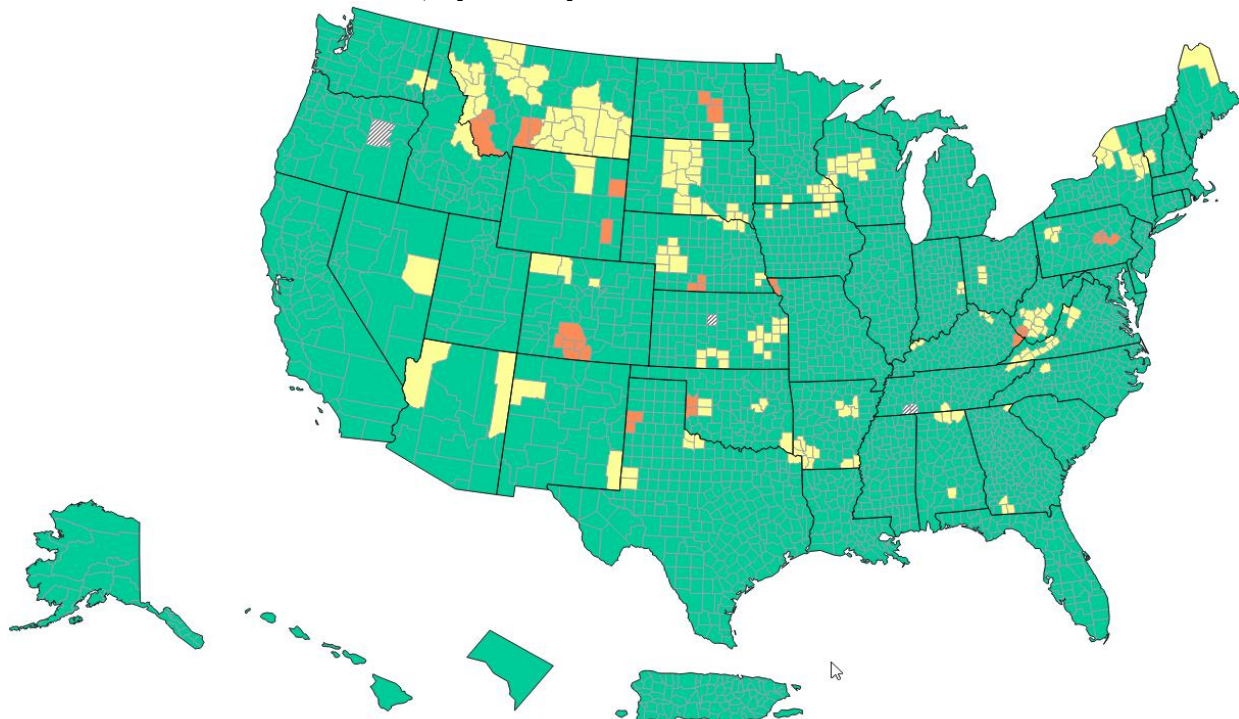
Outpatient Respiratory Illness Activity by CBSA  
 Week 42, ending October 21, 2023



## Influenza Positive Tests Reported to CDC by U.S. Public Health Laboratories, National Summary, May 21, 2023 – October 21, 2023



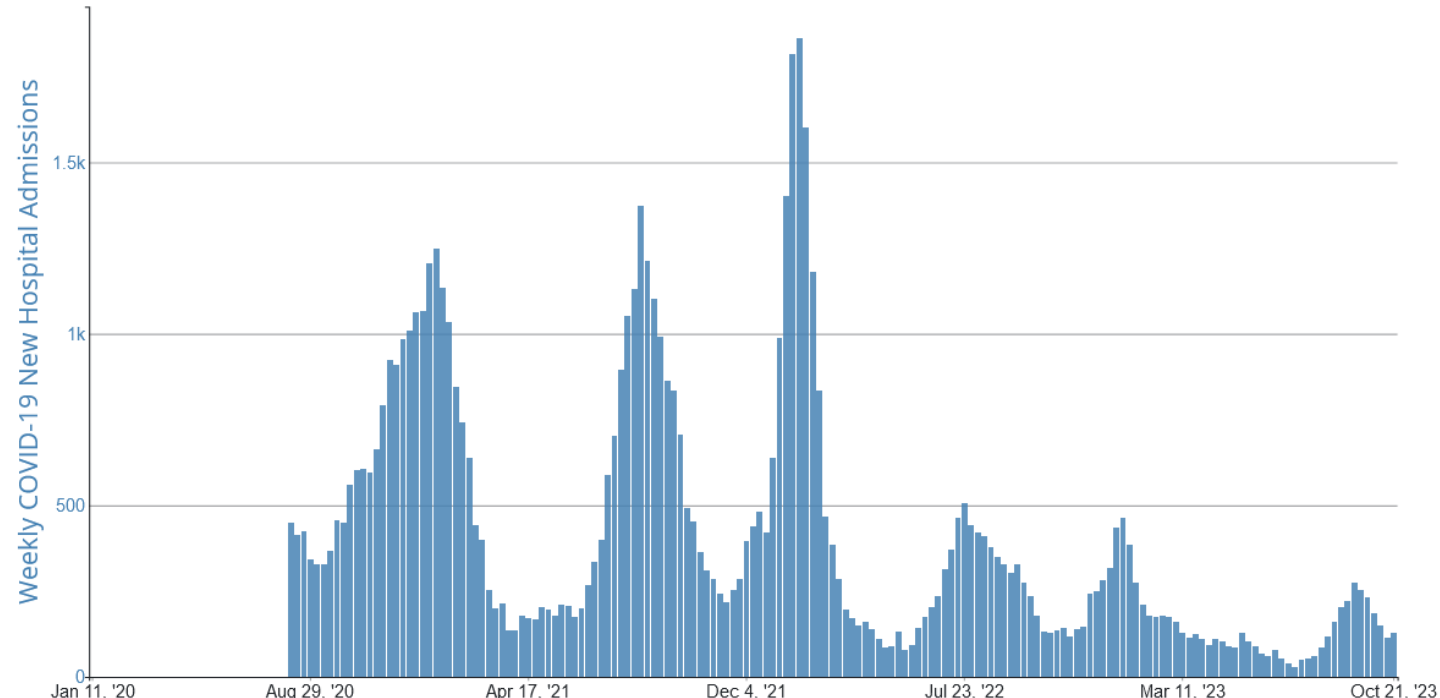
## Reported COVID-19 New Hospital Admissions Rate per 100,000 Population for Week Ending 10/21/2023, by County of Residence – United States



	Total	Percent	% Change
<span style="color: orange;">■</span> ≥ 20.0	33	1.03%	0.34%
<span style="color: yellow;">■</span> 10.0 - 19.9	202	6.28%	-0.34%
<span style="color: green;">■</span> <10.0	2983	92.7%	0.03%

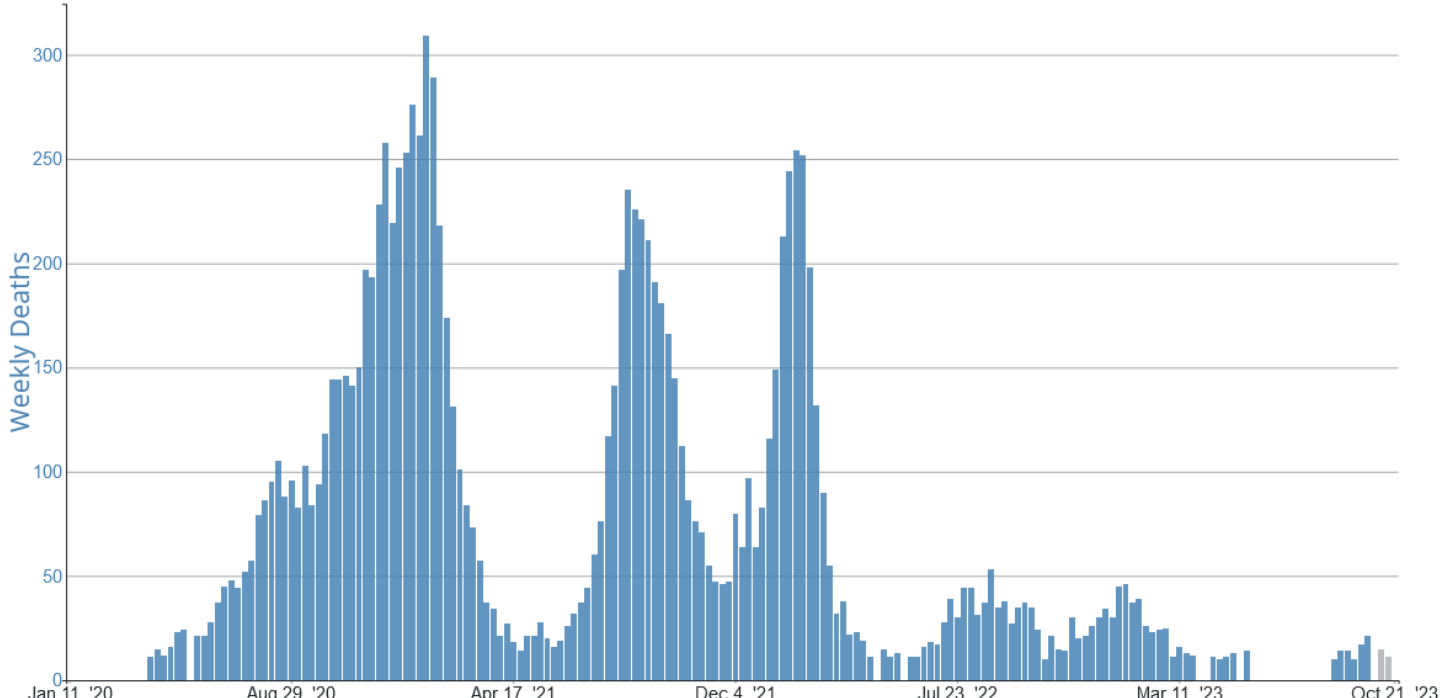
Source: [https://covid.cdc.gov/covid-data-tracker/#maps\\_new-admissions-rate-county](https://covid.cdc.gov/covid-data-tracker/#maps_new-admissions-rate-county)

# COVID-19 New Hospital Admissions, by Week, in Arkansas, Reported to CDC



Source: COVID-19–associated hospitalization data reported to CDC’s National Healthcare Safety Network (NHSN).

# Provisional COVID-19 Deaths, by Week, in Arkansas, Reported to CDC\*

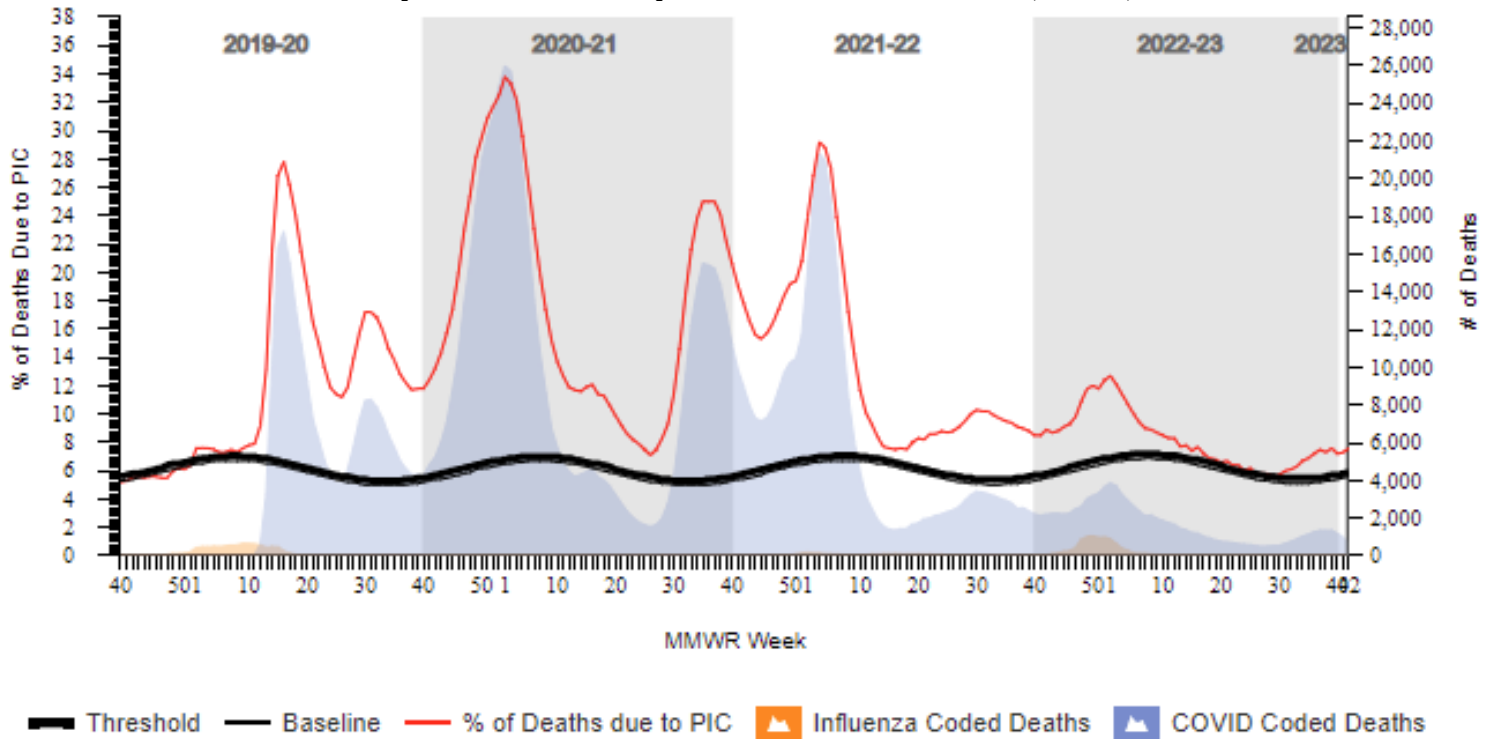


Source: Provisional Deaths from the CDC’s National Center for Health Statistics (NCHS) National Vital Statistics System (NVSS).

\*Weeks with number of deaths between 1-9 are masked (Not Shown)



**Pneumonia, Influenza and COVID-19 (PIC) Mortality from the National Center for Health Statistics Mortality Surveillance System Data as of Oct 26, 2023, National Data**



**Pneumonia, Influenza and COVID-19 (PIC) Mortality from the National Center for Health Statistics Mortality Surveillance System Data as of Oct 26, 2023, Arkansas Data**

